

# **JBC**

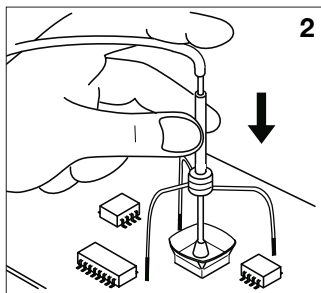
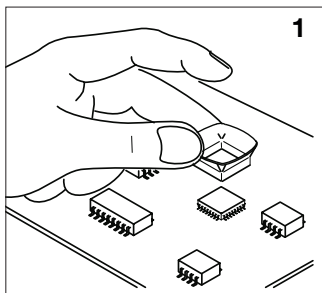
[www.jbctools.com](http://www.jbctools.com)

## **INSTRUCTION MANUAL**

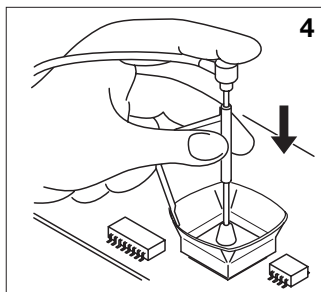
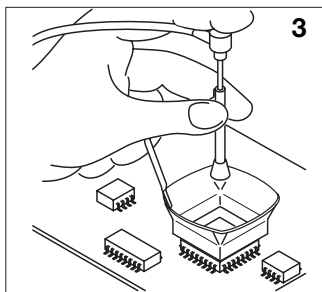


## **Protectors & Extractors**

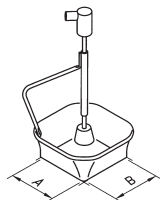
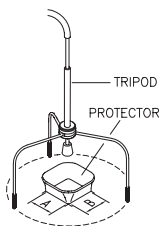
# Operation



To desolder small components you must use the protector + tripod as shown in drawings 1 and 2.



For bigger components use the extractors (fig. 3 and 4).

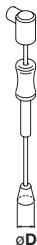


## PROTECTORS

* REF.	AxB (mm)	* REF.	AxB (mm)
P3353	4,3 x 3	44	P4000 12,5 x 12,5
P3786	5,2 x 5,2		P1593 13 x 31,5
P3352	5,2 x 7,5		P3354 13,2 x 13,2
P3355	5,2 x 9,5		P4025 13,5 x 21,5
P3356	6,2 x 4,2	48	P2230 15 x 15
P3785	7,2 x 7,2	60	P4010 17 x 17
P3784	8,2 x 8,2		P4005 18 x 29
P4035	9 x 13		P4030 18,5 x 18,5
P4040	9,5 x 19		P1068 18,5 x 24
P4080	9,5 x 21		P2685 28,5 x 28,5
32 P2220	10 x 10		P4085 31,5 x 31,5
	P4045 10,5 x 21		P2672 33 x 46
	P4090 11 x 16		P4002 50 x 50
24 P2235	12 x 17		P3357 52,5 x 14
	P1249 12 x 23		

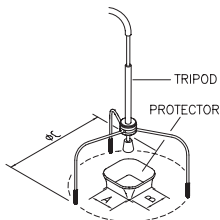
## EXTRACTORS

* REF.	AxB (mm)	* REF.	AxB (mm)
52	E2052 20 X 20		E4015 31,5 X 31,5
64	E2064 20 X 26	84	E2084 33 X 33
80	E2184 24 X 24		E2100 38 X 38
68	E2068 27 X 27		E2124 45 X 45
	E4020 28,5 X 28,5		



## MANUAL EXTRACTOR

REF.	øD (mm)
E2190	7



## TRIPODS

REF.	øC (mm)
T2050	39
T2250	85

# **JBC**

---

## **Warranty**

JBC's 2 year warranty covers this equipment against all manufacturing defects, including the replacement of defective parts and labour.

Warranty does not cover product wear or misuse.

In order for the warranty to be valid, equipment must be returned, postage paid, to the dealer where it was purchased.

---



This product should not be thrown in the garbage.

In accordance with the European directive 2012/19/EU, electronic equipment at the end of its life must be collected and returned to an authorized recycling facility.



**[www.jbctools.com](http://www.jbctools.com)**