

# **JBC**

[www.jbctools.com](http://www.jbctools.com)

## **INSTRUCTION MANUAL**



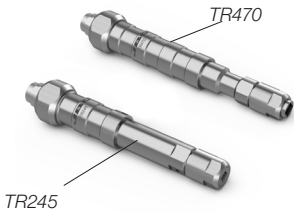
### **TR245/TR470**

General/Heavy Duty Soldering Tool  
for Robot

This manual corresponds to the following references:

- **TR245-B** works with R245 cartridges
- **TR470-B** works with R470 cartridges

## Packing List



**Soldering Tool for Robot** ..... 1 unit  
According purchased reference included either  
Ref. TR245-B or  
Ref. TR470-B

**Clamp** ..... 1 unit  
Ref. 0018779

**Insulator** ..... 1 unit  
Ref. 0020440



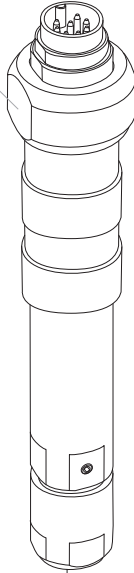
**Screws**  
**DIN 912 M3x10**..... 2 units  
Ref. 0722900

**Screw**  
**DIN 912 M4x16**..... 1 unit  
Ref. 0002984

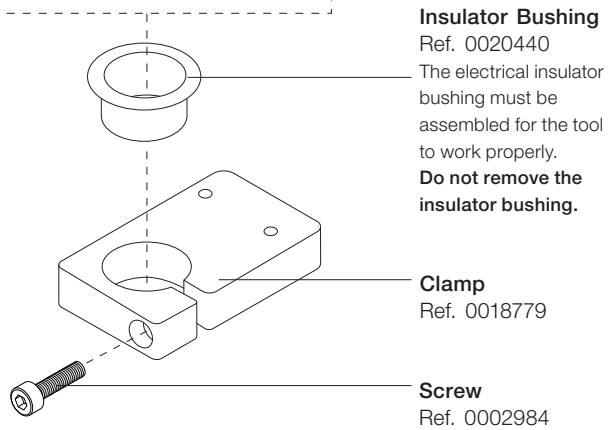
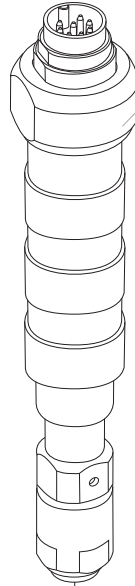
**Manual** ..... 1 unit  
Ref. 0028118

## Assembly

TR245  
General Soldering Tool  
for Robot\*



TR470  
Heavy Duty Soldering Tool  
for Robot\*



**Insulator Bushing**  
Ref. 0020440  
The electrical insulator  
bushing must be  
assembled for the tool  
to work properly.  
**Do not remove the  
insulator bushing.**

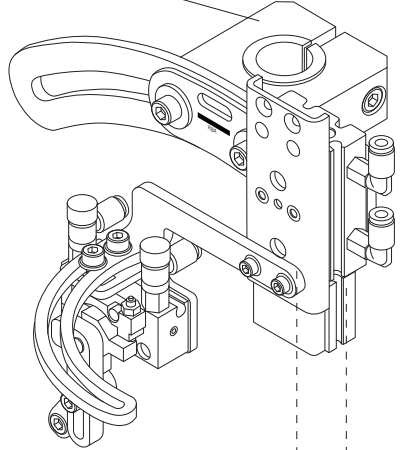
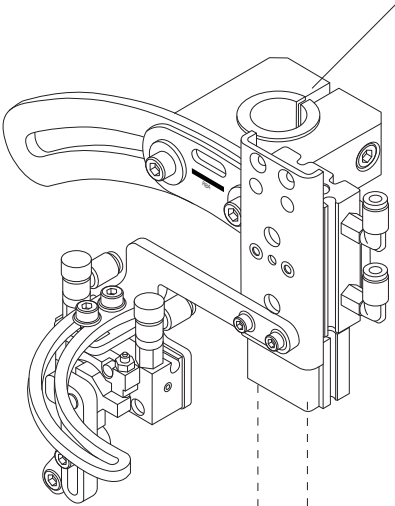
**Clamp**  
Ref. 0018779

**Screw**  
Ref. 0002984

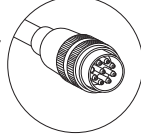
\* If the Soldering Tool is attached in another way, it must be assembled at its fixation in an electrically isolated manner.

# Assembly with RBA

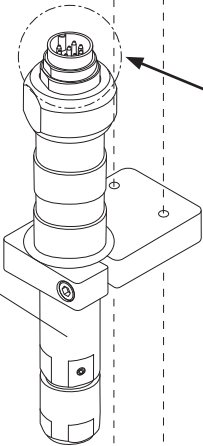
RBA  
Soldering Head  
for Robot\*



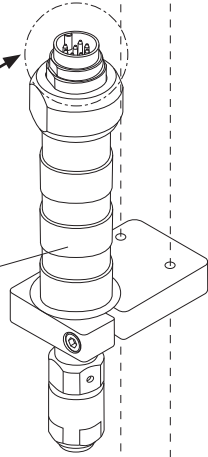
Tool Cable\*  
Ref. 0021403  
TR is connectable to UCR  
by using the tool cable



TR245  
Soldering Tool



TR470  
Soldering Tool



Screws  
Ref. 0722900



\* Not included, sold separately

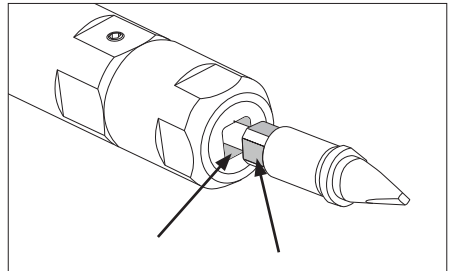
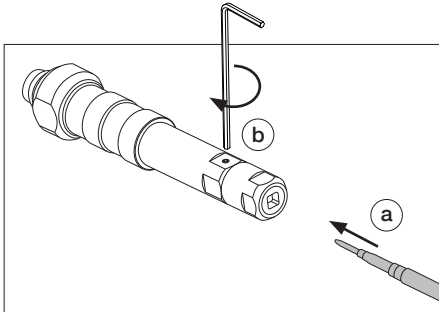
## Inserting and Removing Cartridges



For any manual operation make sure the power is off and both the tool and cartridge are cold. Before removing or inserting the cartridge, make sure the air pressure is off.

Insert the cartridge and press lightly until it is placed in the soldering tool (a). Use an Allen key to fix the cartridge in the handle (b).

The square recess of the soldering tool must be matched with the square shape of the cartridge. Insert the cartridge until the two square shapes come to a limit stop inside.



## Compatibility

	Cartridge Range	Control Unit
TR245	R245	UCR245
TR470	R470	UCR470

RBA, SFR, GSFR and CLMR/CLMRP are compatible with both R245 and R470 ranges.

## Cartridge Range

Find the cartridge models that best suits your soldering needs in [www.jbctools.com](http://www.jbctools.com)



Chisel



Pin / Connector



Drag

# Workplace Example

## HM Soldering Set

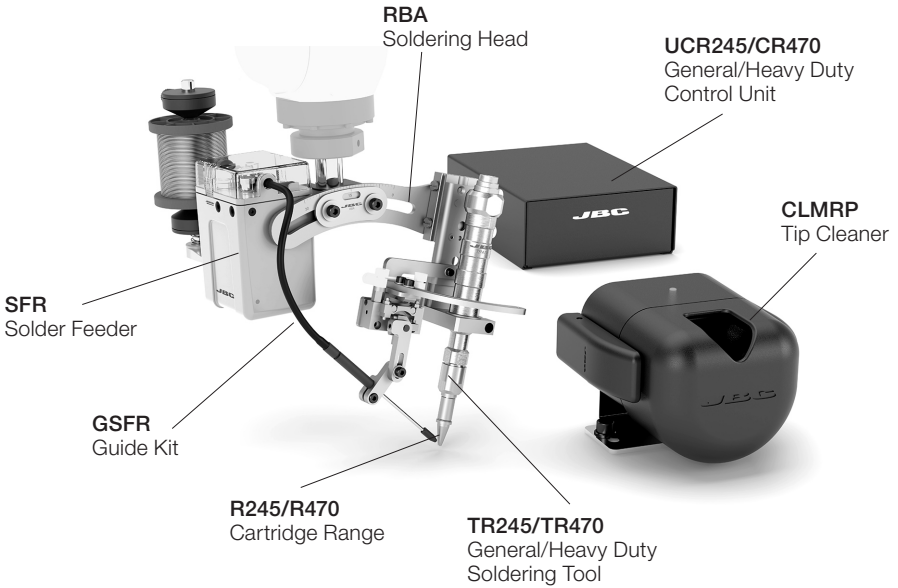
*The cartridge is changed manually.*

### HM245

General Set - works with R245 Cartridges

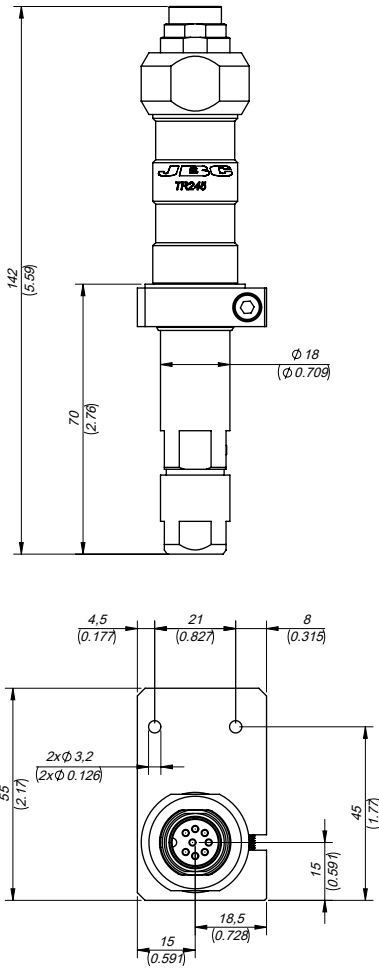
### HM470

Heavy Duty Set - works with R470 Cartridges

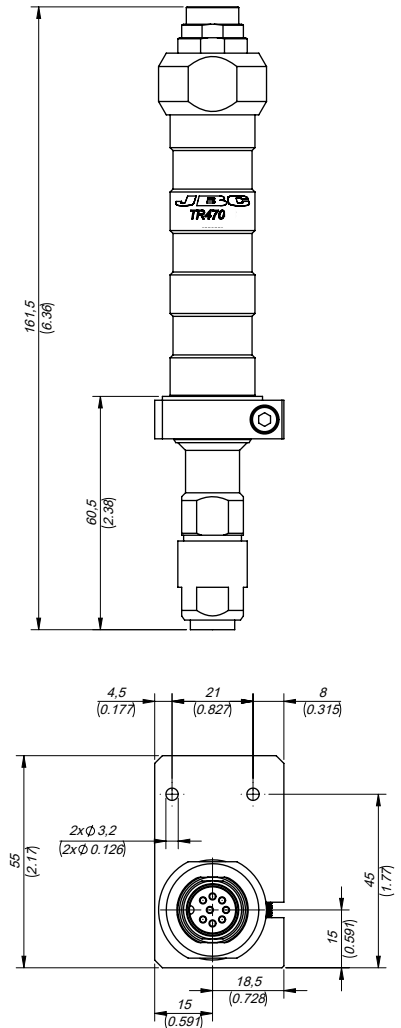


## Dimensions

**Soldering Tool**  
TR245



**Soldering Tool**  
TR470



mm  
(in)

## Maintenance

- Before carrying out maintenance, always unplug the tool.
- Use a damp cloth to clean the tool. Alcohol can only be used to clean the metal parts.
- Periodically check that the metal parts of the tool are clean so the station can detect the tool status
- Periodically check all cable and tube connections.
- Maintain the tip surface clean and tinned prior to storage in order to avoid tip oxidation. Rusty and dirty surfaces reduce heat transfer to the solder joint.
- Replace any defective or damaged parts. Use original JBC spare parts only.
- Repairs should only be performed by a JBC authorized technical service.

## Safety



**It is imperative to follow safety guidelines to prevent electric shock, injury, fire or explosion.**

- Do not use the soldering tool for any purpose other than soldering or rework. Incorrect use may cause a fire.
- Do not leave the appliance unattended when it is on.
- Be sure that the power supply is disconnected before changing any spare parts.
- The temperature of accessible surfaces may remain high after the unit is turned off. Handle with care.
- Allow cartridges to cool down before changing them.
- Heat can cause inflammable products to ignite even when not visible.
- Avoid flux coming into contact with skin or eyes to prevent irritation.
- Be careful with the fumes produced when soldering.
- Keep your workplace clean and tidy. Wear appropriate protective glasses and gloves when working to avoid personal injury.
- Utmost care must be taken with liquid tin waste which can cause burns.









# Specifications

## TR245

### General Soldering Tool for Robot

Ref.: **TR245-B**

- Total Net Weight: 230 g / 0.51 lb
- Dimensions: 142 x 28 mm  
(L x W) 5.59 x 1.10 in
- Package Dimension: 283 x 79 x 56 mm  
(L x W x H) 11.14 x 3.11 x 2.20 in
- Package Weight: 319 g / 0.70 lb

#### Clamp only

- Net Weight: 44 gr / 0.10 lb
- Dimensions: 55 x 33.5 x 10 mm  
(L x W x H) 2.17x 1.32 x 0.39 in

Complies with CE standards.  
ESD safe.

## TR470

### Heavy Duty Soldering Tool for Robot

Ref.: **TR470-B**

- Total Net Weight: 236 g / 0.52 lb
- Dimensions: 161.5 x 28 mm  
(L x W) 6.36 x 1.10 in
- Package Dimension: 283 x 79 x 56 mm  
(L x W x H): 11.14 x 3.11 x 2.20 in
- Package Weight: 325 g / 0.72 lb

# JBC

## Warranty

JBC's 2 year warranty covers this equipment against all manufacturing defects, including the replacement of defective parts and labour.

Warranty does not cover product wear or misuse.

In order for the warranty to be valid, equipment must be returned, postage paid, to the dealer where it was purchased.



This product should not be thrown in the garbage.

In accordance with the European directive 2012/19/EU, electronic equipment at the end of its life must be collected and returned to an authorized recycling facility.

