

JBC

www.jbctools.com

INSTRUCTION MANUAL



Pick and Place unit

Ref. PK-5A

Packing List

The following items are included:

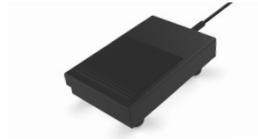
Pick and Place module..... 1 unit
Ref. PK-5A



Pick and Place tool.....1 unit
Ref. T260-A



Pedal..... 1 unit
Ref. P-405



Cups Set 1 unit
Ref. 0940163



Bent Needles Set1 unit
Ref. 0861660



Straight Needles Set 1 unit
Ref. 0901546



Filter Box 1 unit
Ref. 0005966
It contains 50 filters Ref. 0004716



Power Cord.....1 unit
Ref. 0022529

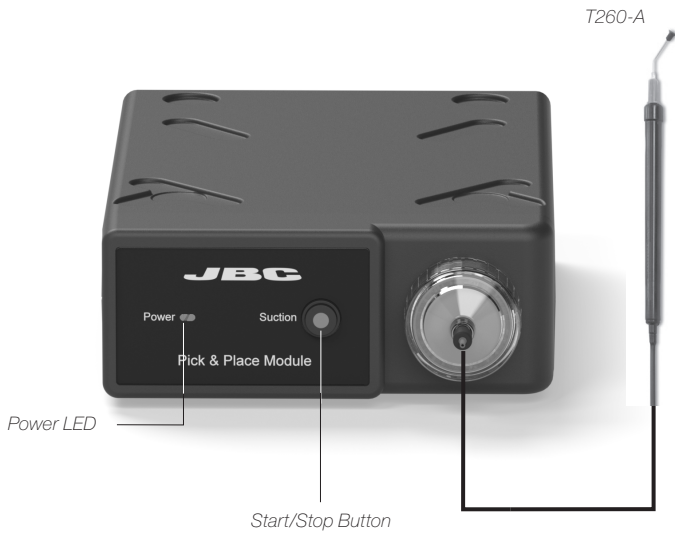
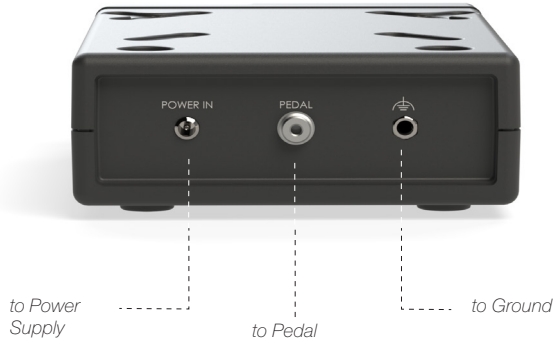


Manual1 unit
Ref. 0024027



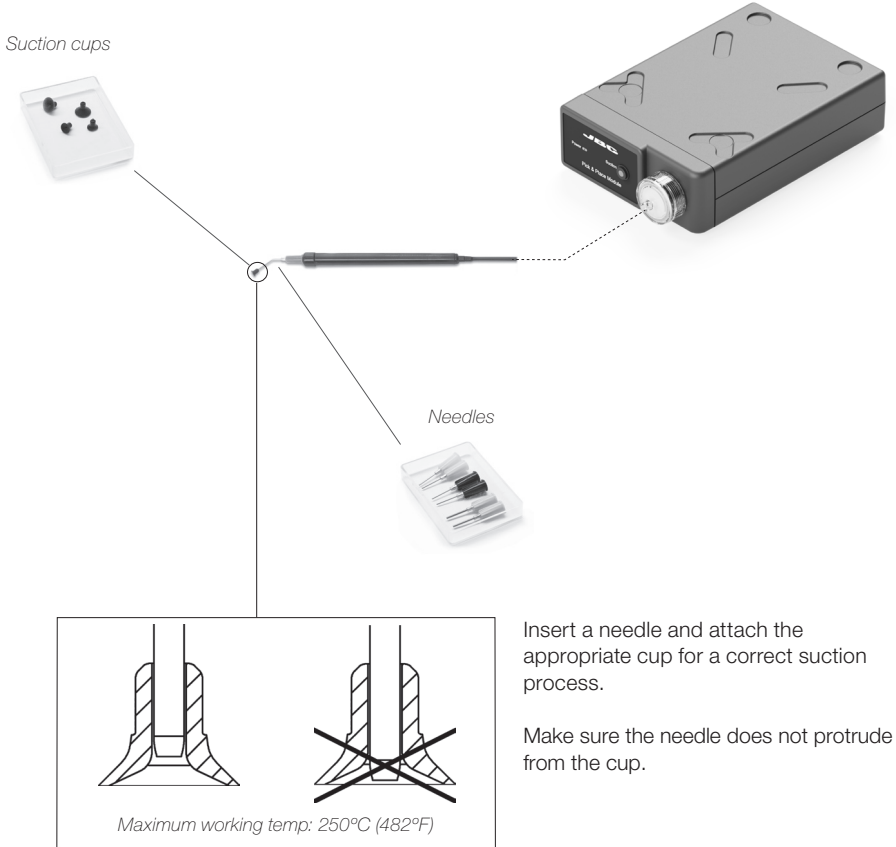
Features

Pick and Place Module Ref. PK-5A



Tool assembly

Choose the needle and the suction cup that best fits the component and start as follows:



Operation modes

a) Hand control

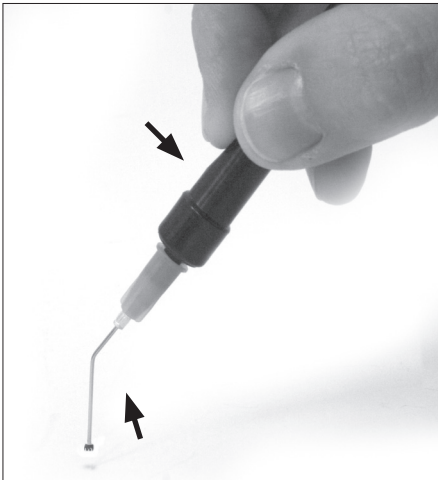


Press the button to activate or stop the suction.



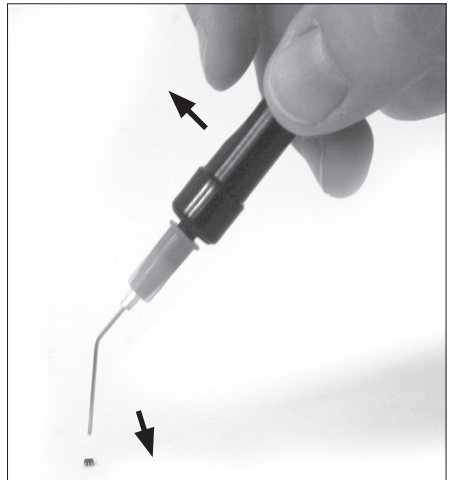
Hold the pen so the hole is accessible to your finger tip.

Suction



Cover the pen hole with your finger and lift off the component.

Release

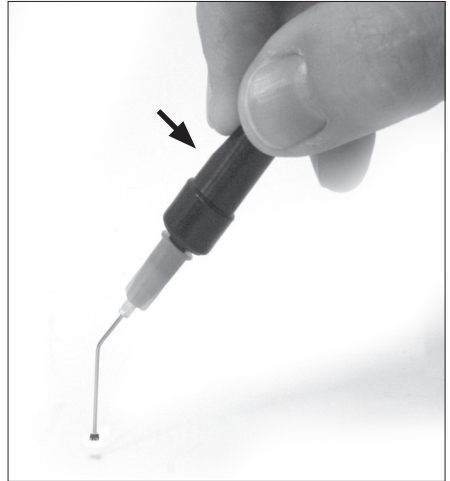


Lift your finger to release the component.

b) Pedal control

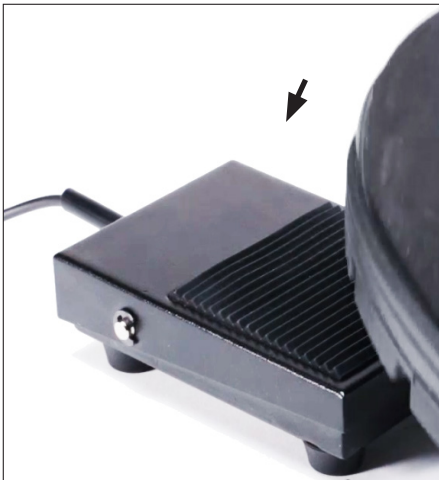


Keep suction button off to allow pedal function.



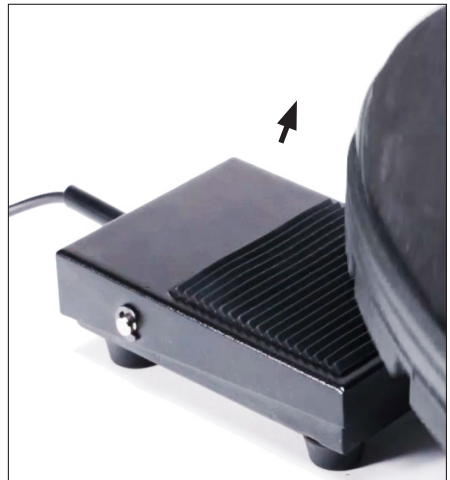
Keep your finger on the pen hole.

Suction



Press the pedal to start the suction

Release

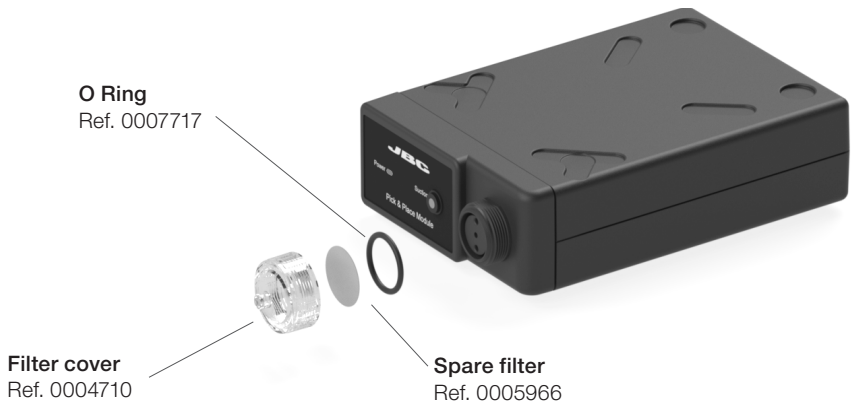


Lift your foot to release the component

Maintenance

Before carrying out maintenance or storage, always unplug the equipment.

- Keep the casing clean by using a damp cloth. Specially use a soft cloth for the front side.
- Periodically check all cable and tube connections.
- Keep filters clean to ensure proper suction and replace them when necessary.



- Use original JBC spare parts only.
- Do not work with defective or damaged pieces.
- Repairs should only be performed by a JBC authorized technical service.
- Maintenance must not be carried out by children unless supervised.

Safety



It is imperative to follow safety guidelines to prevent electric shock, injury, fire or explosion.

- Do not use the units for any purpose other than soldering or rework. Incorrect use may cause fire.
- The power cord must be plugged into approved bases. Be sure that it is properly grounded before use. When unplugging it, hold the plug, not the wire.
- Do not work on electrically live parts.
- Do not leave the appliance unattended when it is on.
- Do not cover the ventilation grills. Heat can cause inflammable products to ignite.
- Avoid flux coming into contact with skin or eyes to prevent irritation.
- Be careful with the fumes produced when soldering.
- Keep your workplace clean and tidy. Wear appropriate protection glasses and gloves when working to avoid personal harm.
- Utmost care must be taken with liquid tin waste which can cause burns.
- This appliance can be used by children over the age of eight and also persons with reduced physical, sensory or mental capabilities or lack of experience provided that they have been given adequate supervision or instruction concerning use of the appliance and understand the hazards involved. Children must not play with the appliance.

有害物质含量表

产品中有害物质的名称及含量

部件名称	有害物质					
	铅(Pb)	汞(Hg)	镉(Cd)	六价铬 (Cr(VI))	多溴联苯 (PBB)	多溴二苯醚 (PBDE)
手柄	○	○	○	○	○	○
电源线	○	○	○	○	○	○
主机	○	○	○	○	○	○
电源插座	○	○	○	○	○	○
电位连接	X	○	○	○	○	○
线路板	○	○	○	○	○	○

○ 表示该有害物质在该部件所有均质材料中的含量均在GB/T 26572 规定的限量要求以下。
X 表示该有害物质至少在该部件的某一均质材料中的含量超出GB/T 26572 规定的限量要求。

Specifications

- Weight: 1,7 kg (3,8lb)
- Size: 145 x 55 x 225 mm (5.71 x 2.17 x 8.86 in)
- Vacuum: 55% / 418mm Hg / 16,4 in Hg
- Ambient operating temperature: 10 - 50 °C (50 - 104 °F)
- Pedal connection

Complies with CE standards.
ESD protected.

JBC

Warranty

JBC's 2 year warranty covers this equipment against all manufacturing defects, including the replacement of defective parts and labour.

Warranty does not cover product wear or misuse.

In order for the warranty to be valid, equipment must be returned, postage paid, to the dealer where it was purchased.

Get 1 extra year JBC warranty by registering here:
<https://www.jbctools.com/productregistration/>
within 30 days of purchase.



This product should not be thrown in the garbage.

In accordance with the European directive 2012/19/EU, electronic equipment at the end of its life must be collected and returned to an authorized recycling facility.



www.jbctools.com

0024027-0120