

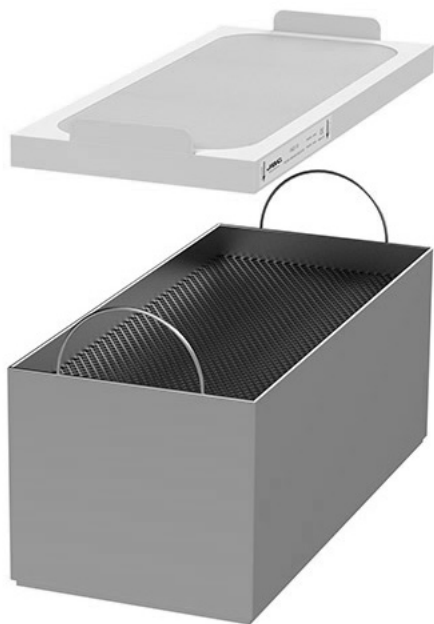


[www.jbctools.com](http://www.jbctools.com)

Product  
website



## INSTRUCTION MANUAL



# FAE2100

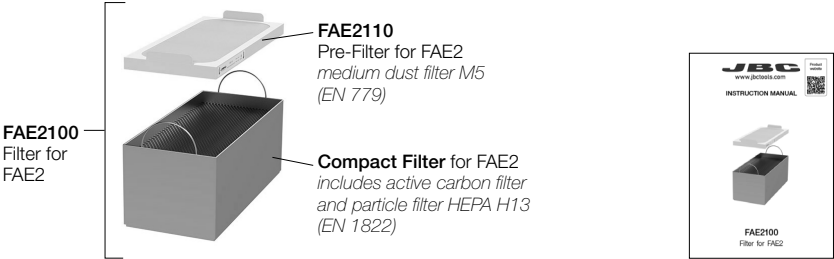
Filter for FAE2

This manual corresponds to the following reference:

**FAE2-100**

**Packing List**

The following items are included:



**Filter for FAE2** ..... 1 unit

**Manual** ..... 1 unit  
Ref. 0020107

**Maintenance** - Filter Saturation Indicator



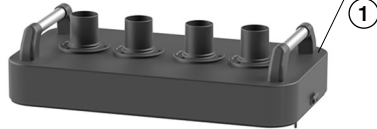
## Maintenance - Filter Replacement

- The fume extractor unit indicates by means of the display and the indicator LED (3) that the filters need to be replaced.
- To replace the filters remove the cover (1) by opening the quick release levers (2), located on both sides of the casing.
- If the indicator LED (3) remains in red after replacing the pre-filter (4), it means that the main filter (5) is saturated and must also be replaced.
- After replacing the main filter (5), the carbon filter counter must be reset (Main Menu: *Filter Set > Reset Carbon*).
- The service life of the main filter is a maximum of 1 year after opening its packaging.
- If the filter is changed while the fume extractor is switched on, the fume extractor unit automatically starts the filter detection process and activates the aspiration for a few seconds.
- If the display shows an error when the equipment is switched on, the cover and casing connectors are probably dirty (6) and making false contact. Remove the cover and clean both connectors carefully, using a soft plastic brush.



**Important:** Before using, unseal the new filter and remove the bottom protection of the compact filter.

Cover

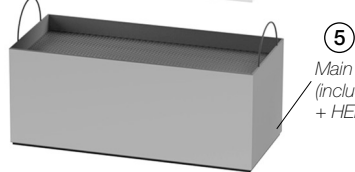


Pre-Filter



5

Main Filter  
(includes carbon  
+ HEPA filter)



2



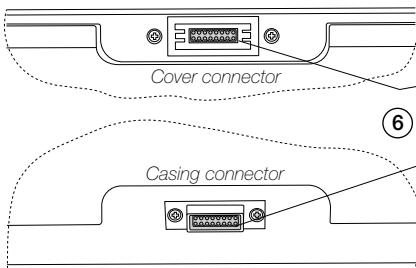
Casing

Display and filter saturation  
indicator LED

3

### Note:

The cover has a given position. Make sure the cover connector mate with the casing connector.

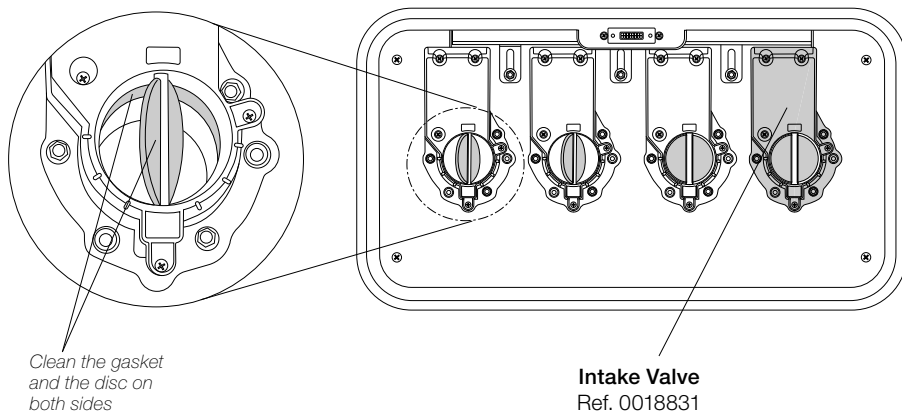


6



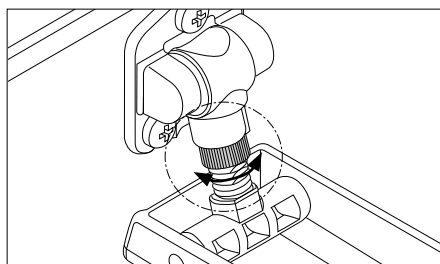
## Maintenance - Valves

- Check the status of the valves when replacing the pre-filter or the compact filter.
- Use the cleaning stick if necessary and clean with alcohol to remove dirt residues.



## Quick Release Lever Adjustment

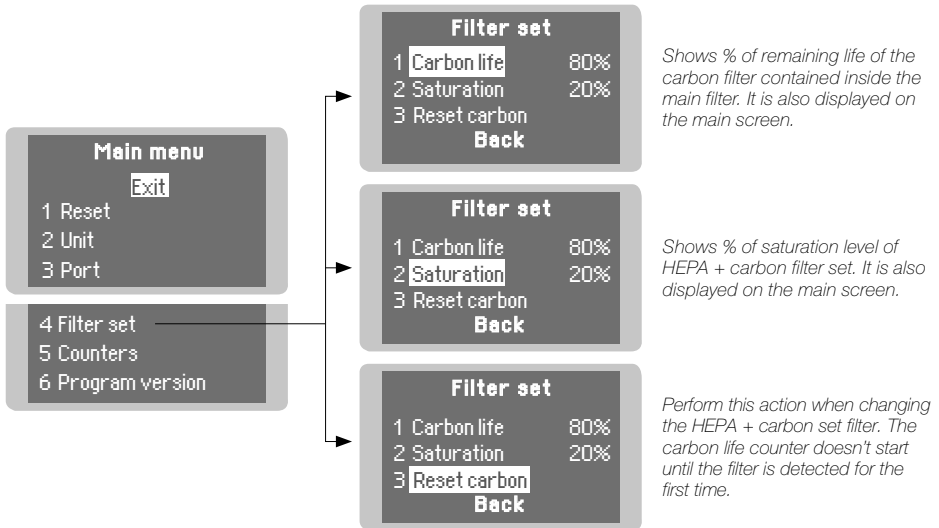
- The locking force between casing and cover can be adjusted by turning the knurled nut of the locking mechanism.
- Turn clockwise to loosen and counterclockwise to tighten.



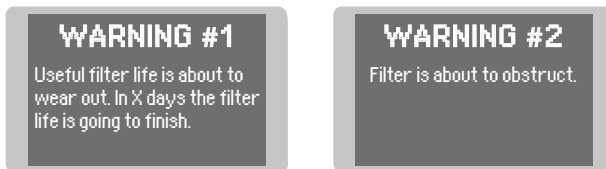
Read the safety guidelines thoroughly to perform the equipment maintenance safely.

## Control Process

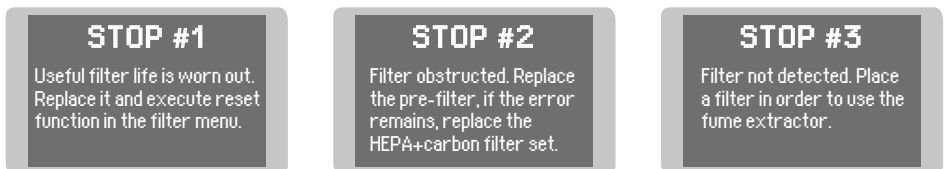
### Filter Menu



### Warning & Errors



The unit notifies when filters need maintenance.



The unit stops working when filters have to be replaced.

## Safety



**It is imperative to follow safety guidelines to prevent electric shock, injury, fire or explosion.**

- The equipment is only designed to filtrate the fumes generated by soldering.
- Do not use the units for the filtration of combustible, explosive or corrosive gases. Incorrect use may cause fire.
- Maintenance must not be carried out by children unless supervised.
- Keep your workplace clean and tidy. Wear appropriate protective mask, glasses and gloves when handling dirt filter or pre-filter.
- Saturated filters can not be cleaned and reused.
- Avoid blowing the filter or the dirty parts of the equipment, if necessary it is advisable to vacuum.
- Avoid losing particles in the unit during handling of the filter.
- Treat the saturated filters as waste depending on the filtered contaminant and the applicable standards in each country.

European Waste Catalog classification:

15 02: Absorbents, filter materials, wiping cloths and protective clothing.

15 02 02: Absorbents, filter materials (including oil filters not otherwise specified, wiping cloths, protective clothing contaminated by dangerous substances.

15 02 03: Absorbents, filter materials, wiping cloths and protective clothing other than those mentioned in 15 02 02.

- In case of not complying with the filter change recommendations, the maximum particle and gas concentrations established in each country could be exceeded.

## Notes

[illegible]

# Specifications

**FAE2100**  
**Filter for FAE2**  
Ref.: **FAE2-100**

Filter	Class	Standard	Efficiency
Pre-Filter	M5	EN 779	40-60 % @ 0,4 µm
	ePB10	ISO 16890	60% ≤ 10 µm
Particle Filter <i>(Compact Filter)</i>	HEPA H13	EN 1822	99,95% @ MPPS*
Gas Filter <i>(Compact Filter)</i>	Activated carbon		

- Compact Filter Dimensions: 450 x 206 x 185 mm / 17.72 x 8.11 x 7.28 in (L x W x H)
- Total Net Weight: 4.5 kg / 9.9 lb
- Package Dimensions / Weight: 480 x 220 x 210 mm / 5.18 kg (L x W x H) 18.90 x 8.66 x 8.27 in / 11.42 lb

Complies with CE standards.



## Warranty

JBC's 2 year warranty covers this equipment against all manufacturing defects, including the replacement of defective parts and labor.

Warranty does not cover product wear or misuse.

In order for the warranty to be valid, equipment must be returned, postage paid, to the dealer where it was purchased.



This product should not be thrown in the garbage.

In accordance with the European directive 2012/19/EU, electronic equipment at the end of its life must be collected and returned to an authorized recycling facility.

