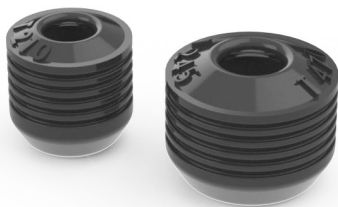




www.jbctools.com

INSTRUCTION MANUAL



OB1000 / OB2000

Sealing Plugs for T210, T245,
T470 and ALE250

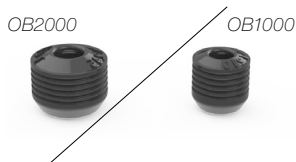
This manual corresponds to the following references:

Ref. **OB1000** for T210

Ref. **OB2000** for T245, T470 and ALE250

Packing list

The following items are included:



**Sealing Plug
for Handles** 1 set

each reference contains 10 plugs

Manual 1 unit
Ref. 0025439

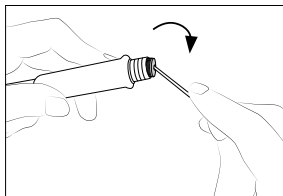
Use of the Sealing Plug

The sealing plug prevents undesirable flux vapors or particles from entering the handle and its usage is highly recommended. If the sealing plug is not used, this can lead to incorrect cartridge contact and may render the tool unusable.

Note: Check the condition of the plug periodically and replace it as soon as wear or cracking is detected.

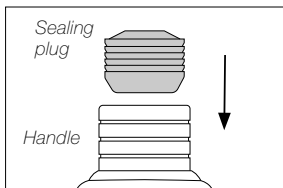
Sealing Plug Replacement

⚠ Before replacing the sealing plug, unplug the power supply and make sure the device has cooled down.



1. Removing the Sealing Plug

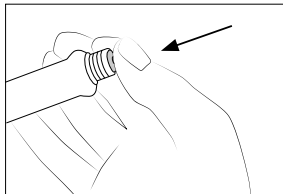
Enter a small shaft or screwdriver in order to gently lift and pull the sealing plug. Do not insert the tool more than 8 mm deep. Never use a cartridge to do this operation.



2. Mounting position

Note the sealing plug mounting position:

The chamfered side has to be positioned towards the handle.



3. Inserting the Sealing Plug

Gently push the sealing plug into the handle until it is fully inserted. Handle and seal edges must be aligned.

Specifications

Sealing Plug for T210, T245, T470 and ALE250

Ref. **OB1000** for T210

- Total Net Weight: 4 g / 0.14 oz
- Total Package Dimensions/Weight: 92 x 55 x 41 mm / 14 g
(L x W x H) 3.62 x 2.17 x 1.61 in / 0.5 oz

Ref. **OB2000** for T245, T470 and ALE250

- Total Net Weight: 6 g / 0.21 oz
- Total Package Dimensions/Weight: 92 x 55 x 41 mm / 16 g
(L x W x H) 3.62 x 2.17 x 1.61 in / 0.56 oz

Complies with CE standards.

JBC

Warranty

JBC's 2 year warranty covers this equipment against all manufacturing defects, including the replacement of defective parts and labour.

Warranty does not cover product wear or misuse.

In order for the warranty to be valid, equipment must be returned, postage paid, to the dealer where it was purchased.



This product should not be thrown in the garbage.

In accordance with the European directive 2012/19/EU, electronic equipment at the end of its life must be collected and returned to an authorized recycling facility.



www.jbctools.com

0025439-061124