

# **JBC**

[www.jbctools.com](http://www.jbctools.com)

Product  
website



## **INSTRUCTION MANUAL**



# **DPM**

## **Manual Paste Dispenser**

This manual corresponds to the following reference:

DPM-B

## Packing List

The following items are included:



**Manual Solder Paste Dispenser** .... 1 unit



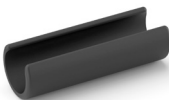
**Syringe Cap** ..... 4 unit  
*(1 unit already assembled in DPM)*



**3 cc Barrel** ..... 2 units



**Piston  
for 3 cc Barrel** ..... 2 units



**Adapter  
for 3 cc Barrel** ..... 1 unit



**5 cc Barrel** ..... 2 units  
*(1 unit already assembled in DPM)*



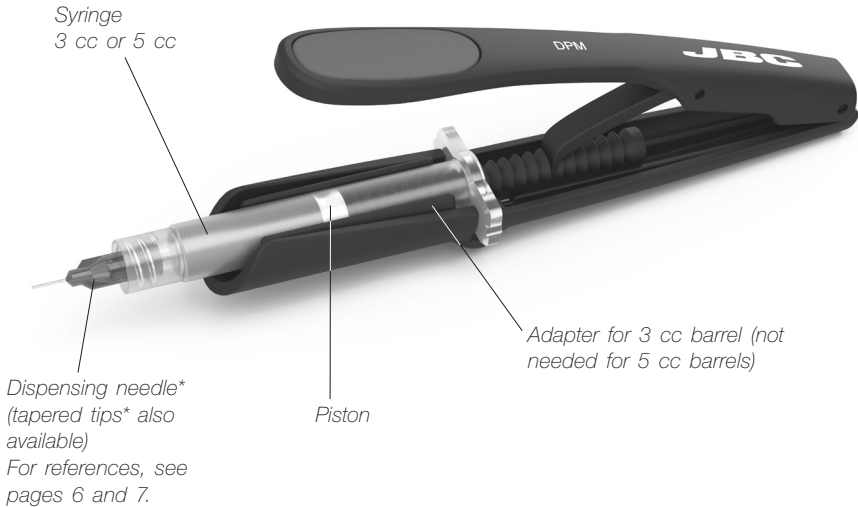
**Piston  
for 5 cc Barrel** ..... 2 units  
*(1 unit already assembled in DPM)*



**Manual** ..... 1 unit  
Ref. 0027208

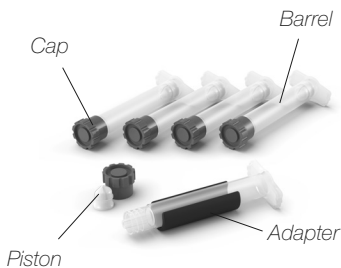
## Features

DPM works with 3 cc and 5 cc syringes.



## Syringe Sets\*

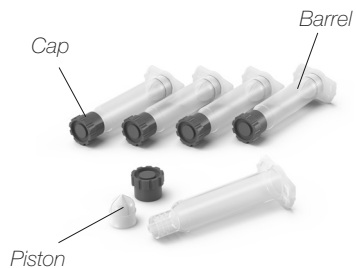
The following syringe barrel sets are available on [www.jbctools.com](http://www.jbctools.com).



### 3 cc Syringe Barrel Set

Ref. **SB03CC** includes:

- Barrel 5 units
- Piston 5 units
- Cap 5 units
- Adapter 1 unit



### 5 cc Syringe Barrel Set

Ref. **SB05CC** includes:

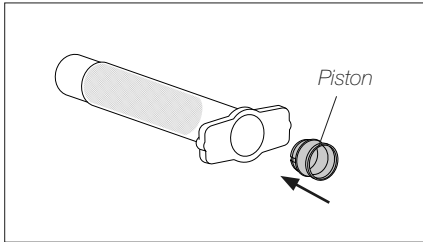
- Barrel 5 units
- Piston 5 units
- Cap 5 units

*\* Not included, sold separately.*

# Operation

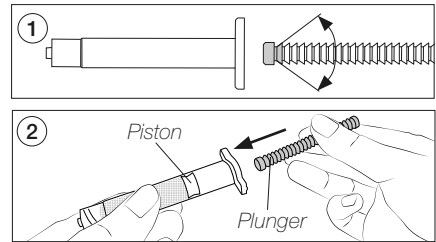
DPM works with 3 cc and 5 cc syringes. Ask your solder paste supplier for this format or fill the JBC syringe barrel with solder paste.

## 1. Piston Placement



Fit the piston into the barrel previously filled with solder paste.

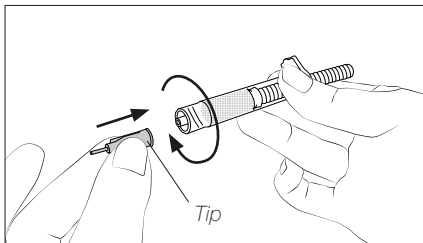
## 2. Plunger Placement



1. Note that the plunger goes into the syringe barrel with its head facing forward. Otherwise, DPM does not work properly.

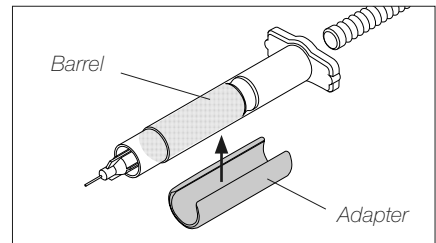
2. Insert the plunger into the piston and press the piston against the solder paste to remove the air inside the barrel.

## 3. Tip Placement



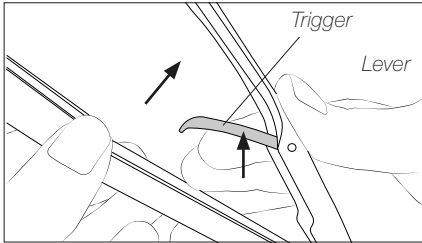
Screw the tip onto the syringe barrel.

## 4. Adapter Use (for 3 cc syringe only)



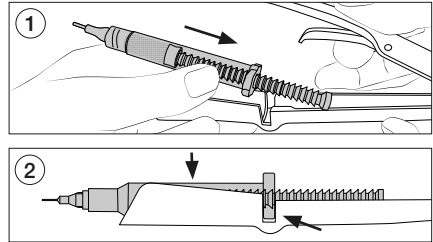
For 3 cc syringes the adaptor is needed. Assemble the adapter by clipping it onto the barrel.

### 5. Lever Lifting



Open DPM by lifting the lever and the trigger.

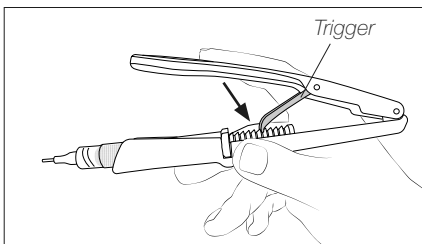
### 6. Syringe Insertion



1. Insert the prepared syringe, including the plunger, into DPM.

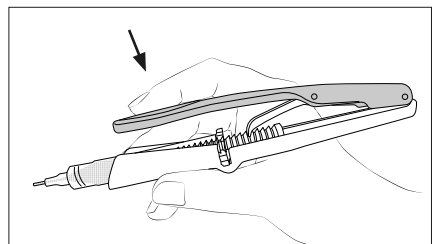
2. Push the syringe down until it snaps into place and the barrel flange rests in the opening.

### 7. Lever Positioning



Lower the trigger until it gets locked into one of the grooves of the plunger.

### 8. Dispensing



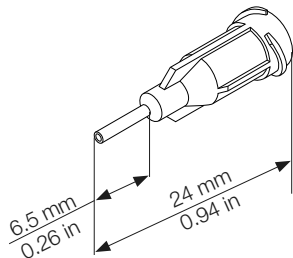
Press the lever until solder paste comes out.

**Note:** When the trigger reaches the end of its stroke, the plunger is reloaded automatically by lifting and pressing down the lever. The trigger automatically jumps into the next plunger groove and the solder paste can be dispensed again.

# Dispensing Needles\* and Tapered Tips\*

JBC offers two different types of dispensing tips, each type with several tip diameters.  
Available on [www.jbctools.com](http://www.jbctools.com).

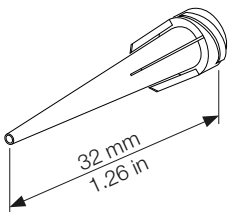
## Dispensing Needles with Stainless Steel Tips



STYLE	REF.	COLOR	SOLDER PASTE (recommended)	GAUGE	ØID (mm/in)	ØOD (mm/in)	LENGTH (mm/in)	TOTAL LENGTH (mm/in)	QTY
Stainless Steel Needles	ND18S6	Green	Type 2	18	0.84/0.050	1.27/0.033	6.5/0.26	24/0.94	10
	ND20S6	Pink	Type 3	20	0.61/0.036	0.90/0.024			
	ND21S6	Purple	Type 3	21	0.51/0.032	0.82/0.020			
	ND22S6	Blue	Type 3	22	0.41/0.028	0.72/0.016			
	ND23S6	Orange	Type 3	23	0.31/0.025	0.63/0.013			
	ND25S6	Red	Type 4	25	0.25/0.020	0.50/0.010			
	ND27S6	Clear	Type 5	27	0.2/0.016	0.40/0.008			
	ND30S6	Lavender	Type 6	30	0.15/0.012	0.31/0.006			

\* Not included, sold separately.

**Tapered Tips**



STYLE	REF.	COLOR	SOLDER PASTE (recommended)	GAUGE	ØID (mm/in)	ØOD (mm/in)	TOTAL LENGTH (mm/in)	QTY
Tapered Tips	ND18P	Green	Type 2	18	0.84/0.033	1.27/0.050	32/1.26	10
	ND20P	Pink	Type 3	20	0.64/0.024	1.20/0.048		
	ND22P	Blue	Type 3	22	0.41/0.016	0.72/0.028		
	ND25P	Red	Type 4	25	0.25/0.010	0.50/0.020		
	ND27P	Clear	Type 5	27	0.2/0.008	0.40/0.016		

\* Not included, sold separately.

# Specifications

## DPM

### Manual Solder Paste Dispenser

Ref.: DPM-B

- Dimensions/Net Weight: 130 x 66 x 16 mm / 0.05 kg  
(L x W x H) 5.12 x 2.60 x 0.63 in / 0.11 lb
- Package Dimensions/Weight: 155 x 55 x 45 mm / 0.074 kg  
(L x W x H) 6.10 x 2.17 x 1.77 in / 0.16 lb

Complies with CE standards.  
ESD Safe.

# JBC

## Warranty

JBC's 2 year warranty covers this equipment against all manufacturing defects, including the replacement of defective parts and labor.

Warranty does not cover product wear or misuse.

In order for the warranty to be valid, equipment must be returned, postage paid, to the dealer where it was purchased.



This product should not be thrown in the garbage.

In accordance with the European directive 2012/19/EU, electronic equipment at the end of its life must be collected and returned to an authorized recycling facility.



[www.jbctools.com](http://www.jbctools.com)