

# JBC

[www.jbctools.com](http://www.jbctools.com)



## Digital Thermometer

Ref. TID-A



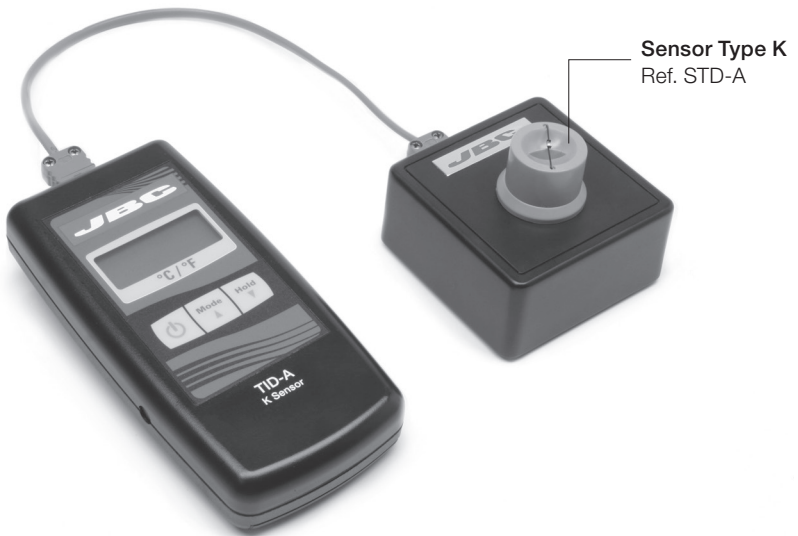
## Packing List

The following items should be included:

**Console** ..... 1 unit  
Ref. 0014846

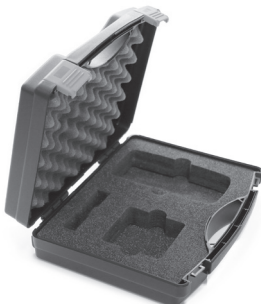
**Thermocouple cable** ..... 1 unit  
Ref. 0014848

**Sensor Stand** ..... 1 unit  
Ref. 0014847



**Case** ..... 1 unit  
Ref. 0014853

**Manual** ..... 1 unit  
Ref. 0014796



## Features



## Special Features

The instrument also provides:

- Min/Max Value Memory (Clear option)
- Hold function (Reset option)
- Offset and Scale adjustment
- Configuration:
  - Auto Power Off Time (20min by default)
  - Display Unit (°C/°F)
  - Display Resolution (1°)

Please visit our website for TID-A Special Features information:  
[www.jbctools.com/pdf/TID-A\\_sf\\_manual.pdf](http://www.jbctools.com/pdf/TID-A_sf_manual.pdf)

## Operation

This **quick response** digital thermometer offers accurate measuring of the tip temperature.

### 1. Apply solder

The soldering tip must be properly tinned before taking a reading.



### 2. Read the temperature

Place the soldering tip in the centre of the sensor as when soldering. Wait until the temperature stabilizes.



# Safety



**It is imperative to follow safety guidelines to prevent electric shock, injury, fire or explosion.**

This device has been designed and tested in accordance with the safety regulations for electronic devices. However, its trouble-free operation and reliability cannot be guaranteed unless the standard safety measures and special safety advice in this manual is complied with during use.

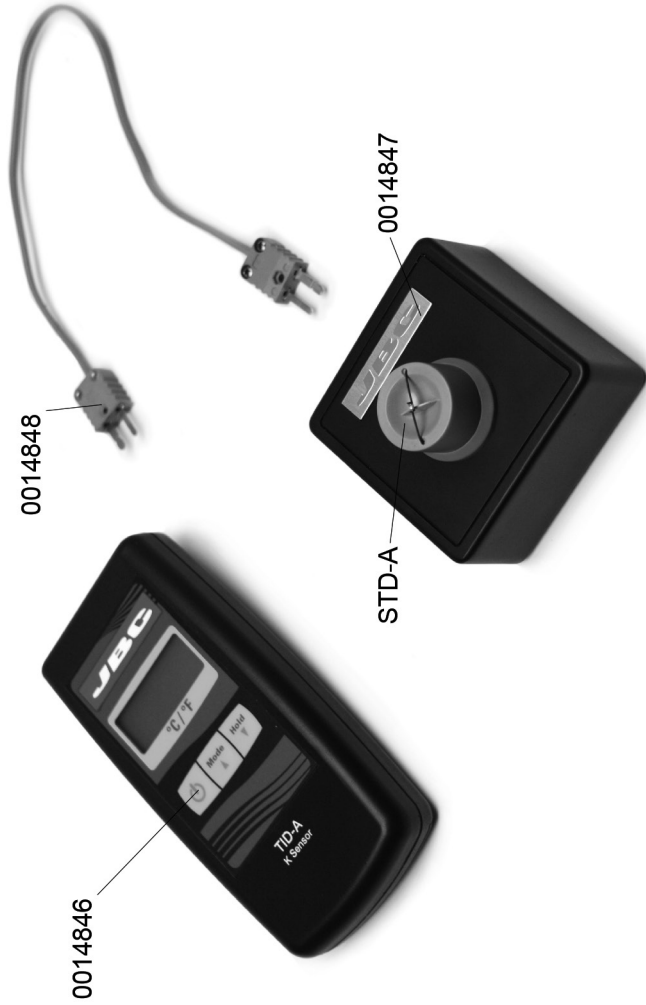
- Trouble-free operation and reliability of the device can only be guaranteed if it is not subjected to any other climatic conditions than those stated under “Specification”. If the device is transported from a cold to a warm environment, condensation may result in failure. Should this occur, make sure the temperature of the device has readjusted to the ambient temperature before trying a new start-up.
- If this is connected to other devices, the circuitry must be carefully designed. Internal connection to other apparatus (e.g. connection GND/earth) may result in high voltages which will damage the device(s).
- If there is any risk during use, the device must be switched off immediately and marked accordingly to avoid being used again. Operator safety may be at risk if there is visible damage to the device, the device is not working as specified or the device has been stored under unsuitable conditions for a long time. If in doubt, please return the device to the manufacturer for repair or maintenance.
- For professional use. Only used by authorised personnel.

## Warning

- Do not use this product as a safety or emergency stop device, or in any other application where failure of the product could result in personal injury or material damage.

## Working recommendations

- Use a “non residue” classified flux and avoid contact with skin or eyes to prevent irritation.
- Utmost care must be taken with liquid tin waste which can cause burns.
- Be careful with the fumes produced when soldering.
- Keep your workplace clean and tidy. Wear appropriate protection glasses and gloves when working to avoid personal harm.

**Exploded View****TID-A  
DIGITAL THERMOMETER  
TYPE K SENSOR**

# Specifications

|  |  |
|--|--|
| - Measuring range:   | -65 to +1150°C / -85 to +1999°F  |
| - Resolution:  | 1°C / 1°F  |
| - Precision ( $\pm 1$ Digit)<br>(at nominal temperature = 25°C): | -65°C to +1150°C:<br>$\pm 0.1\%$ of measuring value $\pm 0.2\%$ full scale   |
| - Temperature drift:   | 0.01%/K  |
| - Point of comparison:   | $\pm 0.3$ °C   |
| - Probe connection:  | Type K thermocouple  |
| - Measuring frequency:   | 3 measurings per second  |
| - Operating conditions:  | -25 to 50°C; 0 to 80 %RH (non-condensing)  |
| - Storage temperature:   | -25 to 70°C  |
| - Power supply:  | 9V battery type JEC 6F22 (in scope of supply)  |
| - Power consumption:   | 150 $\mu$ A  |
| - Weight:  | 150 gr incl. battery   |
| - EMC:   | The device corresponds to the essential protection ratings established in the Regulations of the Council for the Approximation of Legislation for the member countries regarding electromagnetic compatibility (89/336/EWG). Additional fault: <1% |

## JBC

### Warranty

JBC's 2 year warranty covers this equipment against all manufacturing defects, including the replacement of defective parts and labour.

Warranty does not cover product wear or misuse.

In order for the warranty to be valid, equipment must be returned, postage paid, to the dealer where it was purchased.

**Register your warranty within 30 days of purchase in [www.jbctools.com/productregistration](http://www.jbctools.com/productregistration)**



This product should not be thrown in the garbage.

In accordance with the European directive 2002/96/EC, electronic equipment at the end of their life must be collected and returned to an authorized recycling facility.



Manual in other languages available on our website

**[www.jbctools.com](http://www.jbctools.com)**