

JBC

www.jbctools.com

INSTRUCTION MANUAL



FAE2 H13 Filter

Ref. FAE2-100

Packing List

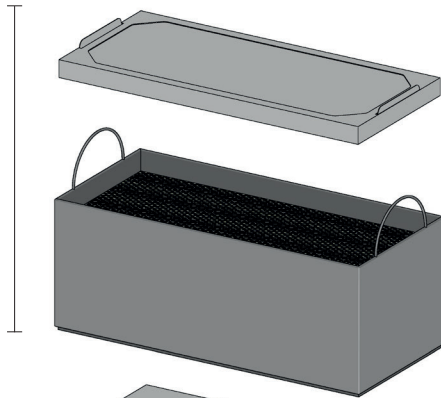
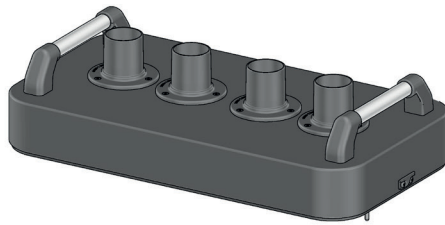
The following items should be included:

FAE2 H13 Filter 1 unit
Ref. FAE2-100
(Includes pre filter and certificate)

Manual 1 unit
Ref. 0020107



Features



H13 filter
+ Pre filter
Ref. FAE2-100

M5 Pre filter
Ref. FAE2-110

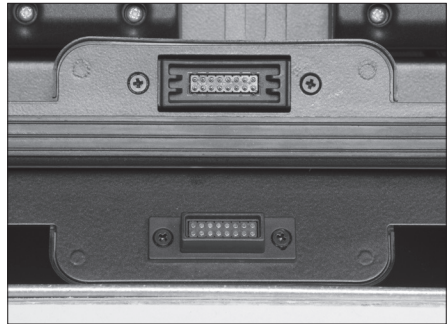
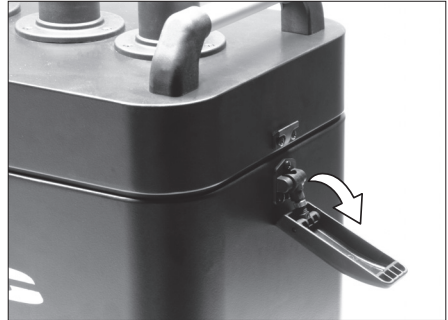
! Important:
Before using, unseal
the filter and remove
the bottom protection
of the compact filter.



Fume Extractor
Ref. FAE2-5A

Replacement

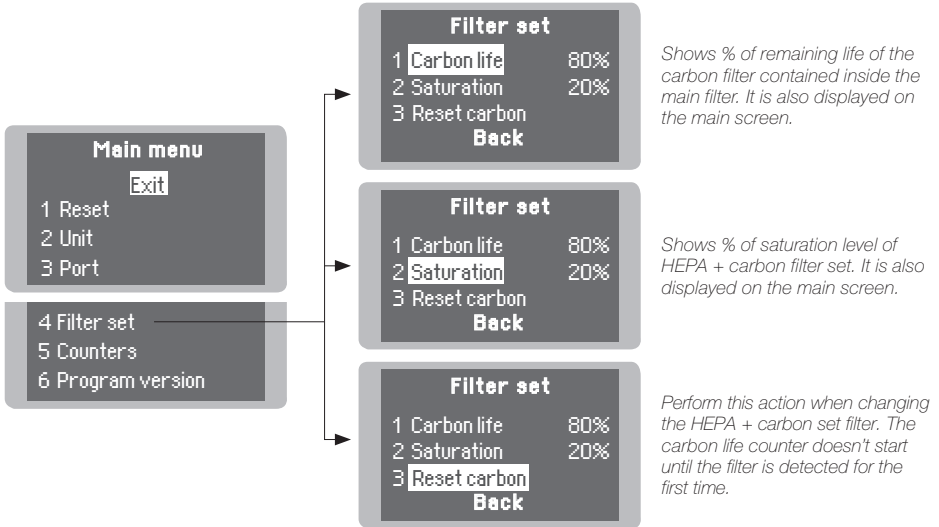
- The unit notifies through both the display and the LED when filters need maintenance.
- To replace the filters, first turn the fume extractor off. Then remove the cover by opening the side closures of the casing.
- If once the pre-filter has been changed the saturation indicator is on, it means that the main filter is already saturated and must be replaced too.
- The duration of the main filter is 1 year maximum once its packaging is opened.
- Once the compact filter has been replaced, the filter counter must be reset.
(Main Menu > Filter set > Reset)
- If the display shows an error message when the equipment is switched on, it is probable that the cover and casing connectors are dirty and making false contact between them. Remove the cover again and clean both connectors.



Read safety guidelines to do the equipment maintenance securely.

Control Process

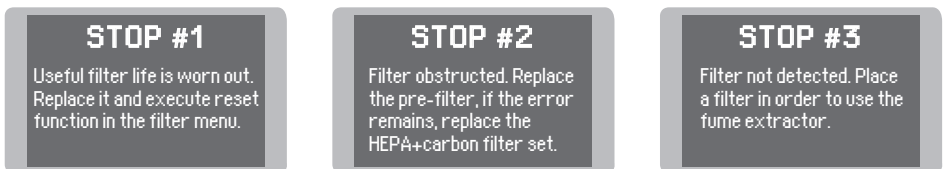
Filter Menu



Warning & Errors



The unit notifies when filters need maintenance.



The unit stops working when filters have to be replaced.

Safety



It is imperative to follow safety guidelines to prevent electric shock, injury, fire or explosion.

- The equipment is only designed to filtrate the fumes generated by soldering.
- Do not use the units for the filtration of combustible, explosive or corrosive gases. Incorrect use may cause fire.
- Maintenance must not be carried out by children unless supervised.
- Keep your workplace clean and tidy. Wear appropriate protective mask, glasses and gloves when handling dirt filter or pre-filter.
- Saturated filters can not be cleaned and reused.
- Avoid blowing the filter or the dirty parts of the equipment, if necessary it is advisable to vacuum.
- Avoid losing particles in the unit during handling of the filter.
- Treat the saturated filters as waste depending on the filtered contaminant and the applicable standards in each country.

European Waste Catalog classification:

15 02: Absorbents, filter materials, wiping cloths and protective clothing.

15 02 02: Absorbents, filter materials (including oil filters not otherwise specified, wiping cloths, protective clothing contaminated by dangerous substances.

15 02 03: Absorbents, filter materials, wiping cloths and protective clothing other than those mentioned in 15 02 02.

- In case of not complying with the filter change recommendations, the maximum particle and gas concentrations established in each country could be exceeded.

Notes

Specifications

- Net Weight: 4,5 kg (9.9 lb)
- Dimensions: 450 x 205 x 185 mm (17.72 x 8.07 x 7.28 in)
- Pre-filter: Medium dust filter M5 (EN 779)
- Main Filter: H13 particle filter (EN 1822)
Activated carbon filter

Complies with CE standards.

JBC

Warranty

JBC's 2 year warranty covers this equipment against all manufacturing defects, including the replacement of defective parts and labour.

Warranty does not cover product wear or misuse.

In order for the warranty to be valid, equipment must be returned, postage paid, to the dealer where it was purchased.



This product should not be thrown in the garbage.
Saturated filters must be collected and returned to an authorized recycling facility.



Manual in other languages available on our website

www.jbctools.com