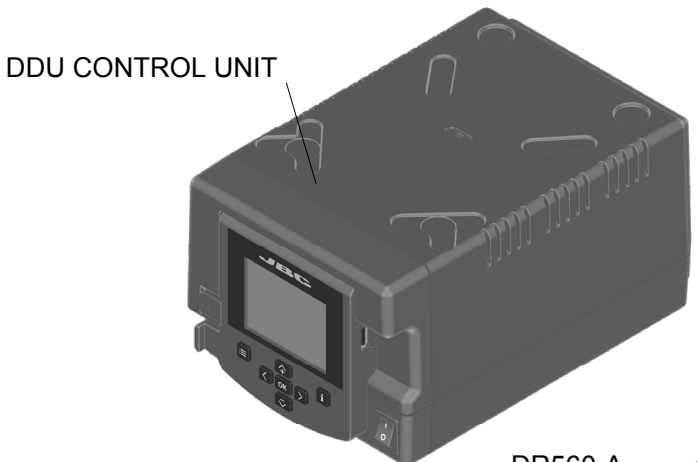
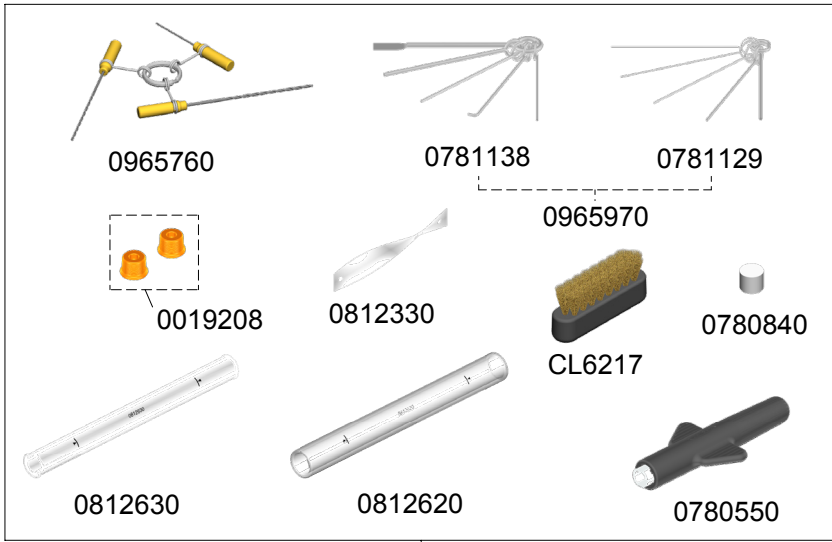


DDS
 2-Tool DDU Desoldering Station
 Ref.: **DDSE-1QD** 120V
 DDSE-2QD 230V
 DDSE-9QD 100V



SPARE PARTS	
CONTROL UNIT:	
-REAR CIRCUIT	0028012
-ENCLOSURE	
· TOP	0019028
· BOTTOM	0026182
· FRONT+DISPLAY	0022317
· BACK	0026324
MSE-A:	
-CIRCUIT	0018453
-ENCLOSURE	
· TOP	0015266
· BOTTOM	0022642
· FRONT	0014688
· BACK	0015261
-PUMP	0005652



Ref.: **DDSE-9QD** 100V FUSE T-5A
 DDSE-1QD 120V FUSE T-4A
 DDSE-2QD 230V FUSE T-2A

