

JBC

www.jbctools.com

INSTRUCTION MANUAL



H2464, H2465, H2466, H2467

Charging-Holders for B-IRON Tools

This manual corresponds to the following references:

0032464 - *Left-Side Charging-Holder for B-IRON Handles*

0032465 - *Right-Side Charging-Holder for B-IRON Handles*

0032466 - *Left-Side Charging-Holder for B-TWEEZERS*

0032467 - *Right-Side Charging-Holder for B-TWEEZERS*

Packing List

The following items are included:



**Charging-Holder
for B-IRON Tools** 1 unit

According to purchased ref.

Manual 1 unit
Ref. 0032516

Features

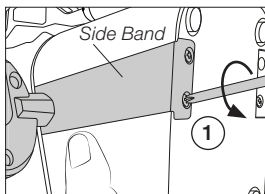
These charging holders are used with B-IRON stations or BCB Charging-Base.

They allow expanding the station with a second charging holder, or replacing an already assembled one.



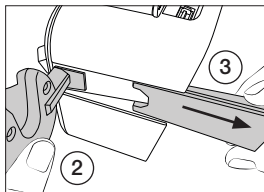
Charging Holder Assembly

Charging holders can be replaced by loosening the screws at the bottom of the charging-base.

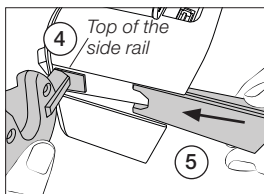


Open the screws (1) at the bottom.

Hold the charging holder with one hand (2) and with the other pull the sideband downward (3).



To install a new charging holder, place it at the top of the side rail (4) and slide back the slide band (5) until the holder is secured in place. Finally tighten the screws at the base.



Maintenance

Periodically clean the metal parts of the charging holder to ensure a proper connection and charging of the tool.



Specifications

H2464, H2465, H2466, H2467

Charging-Holders for B-IRON Tools

Ref. **0032464** - *Left-Side Charging-Holder for B-IRON Handles*

Ref. **0032465** - *Right-Side Charging-Holder for B-IRON Handles*

- Total Net Weight: 88 g / 0.19 lb
- Package Dimensions: 57 x 47 x 97 mm / 104 g
(L x W x H) 2.24 x 1.85 x 3.82 in / 0.23 lb

Ref. **0032466** - *Left-Side Charging-Holder for B-TWEEZERS*

Ref. **0032467** - *Right-Side Charging-Holder for B-TWEEZERS*

- Total Net Weight: 86 g / 0.19 lb
- Package Dimensions: 81 x 42 x 113 mm / 106 g
(L x W x H) 3.19 x 1.65 x 4.45 in / 0.23 lb

Complies with CE standards.

JBC

Warranty

JBC's 2 year warranty covers this equipment against all manufacturing defects, including the replacement of defective parts and labour.

Warranty does not cover product wear or misuse.

In order for the warranty to be valid, equipment must be returned, postage paid, to the dealer where it was purchased.



This product should not be thrown in the garbage.

In accordance with the European directive 2012/19/EU, electronic equipment at the end of its life must be collected and returned to an authorized recycling facility.



www.jbctools.com