



www.jbctools.com

INSTRUCTION MANUAL



CC2002

Cable Collector
for NANO Stations

This manual corresponds to the following reference:
CC2002

Packing List

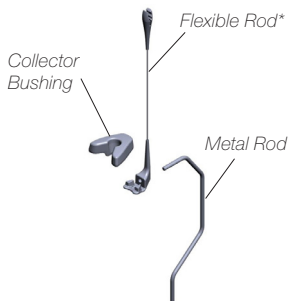
The following items are included:



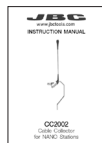
Allen Key 1,5 mm 1 unit
Ref. 0009848



Set Screw
DIN 913 M3x4 2 units



Cable collector 1 unit



Manual 1 unit
Ref. 0025685

Cable Collector Pre-Assembly

All parts of the cable collector must be pre-assembled before assembling them to the NANO station.

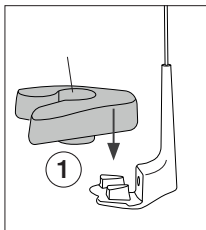
Use the allen key and one set screw to join them as shown on the following page.

**The flexible rod can be purchased separately (ref. 0032193)*

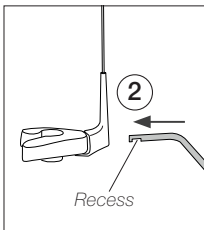
Cable Collector Assembly

JBC

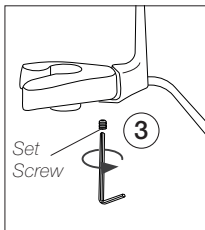
www.jbctools.com



Attach the collector bushing to the flexible rod anchor.

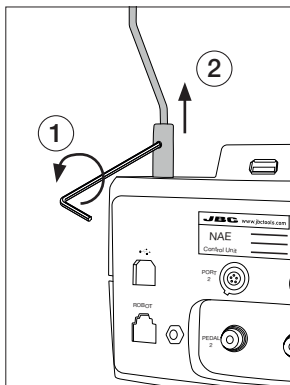


Insert the metal rod with its recess facing down into the flexible rod anchor

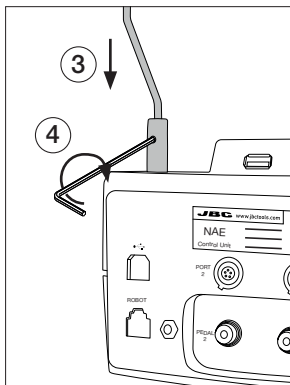


To fix the three parts, screw in the set screw and tighten it.

Cable Collector Replacement



Loosen the set screw (1) and withdraw the cable collector (2).



Insert the new cable collector (3) and tighten the screw (4).

Specifications

CC2002

Cable Collector for NANO Stations

Ref.: **CC2002**

- | | |
|--------------------------------|----------------------------------|
| - Collector Dimensions: | 339 x 73 x 35 mm |
| (L x W x H) | 13.35 x 2.87 x 1.38 in |
| - Net Weight: | 42 g / 0.093 lb |
| - Package Dimensions / Weight: | 235 x 40 x 40 mm / 70 g |
| (L x W x H) | 9.25 x 1.57 x 1.57 in / 0.154 lb |

Complies with CE standards.

ESD safe.

JBC

Warranty

JBC's 2 year warranty covers this equipment against all manufacturing defects, including the replacement of defective parts and labour.

Warranty does not cover product wear or misuse.

In order for the warranty to be valid, equipment must be returned, postage paid, to the dealer where it was purchased.



This product should not be thrown in the garbage.

In accordance with the European directive 2012/19/EU, electronic equipment at the end of its life must be collected and returned to an authorized recycling facility.



www.jbctools.com