

JBC

www.jbctools.com

INSTRUCTION MANUAL



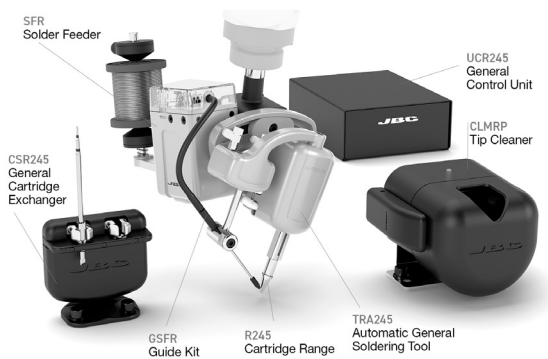
HA245/HA470

Automatic General/Heavy Duty
Soldering Set for Robot

This manual corresponds to the following references:

- HA245A-5B works with R245 cartridges
- HA470A-5B works with R470 cartridges

Packing List



Manual 1 unit
Ref. 0027871

TRA includes:



Automatic Soldering Tool for Robot 1 unit
According to purchased reference, included either
Ref. TRA245-B or
Ref. TRA470-B

Manual 1 unit
Ref. 0027874

SFR includes:



Solder Feeder for Robot 1 unit
Ref. SFR-B



Reel Support 1 unit
Ref. 0024561



Communication Cable 3 m 1 unit
Ref. 0024563



Allen Key 1.5 mm 1 unit
Ref. 0741610



Allen Key 2.5 mm 1 unit
Ref. 0012574



Allen Key 3 mm 1 unit
Ref. 0013609



Screws DIN 912 M4x65 2 units
Ref. 0024552



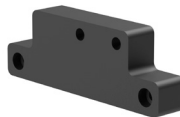
Screws DIN 912 M4x20 2 units
Ref. 0921890



Screws DIN 7991 M4x10 1 unit
Ref. 0490180



Spanner 10 mm 1 unit
Ref. 0017631



Insulator 1 unit
Ref. 0024588



Manual 1 unit
Ref. 0027875

UCR includes:



Control Unit for Robot 1 unit
According to purchased reference, included either
Ref. UCR245-5A or
Ref. UCR470-5A



Power Cord 1.5 m 1 unit
Ref. 0023714 (230 V)



Tool Cable 3 m 1 unit
Ref. 0027924



Communications Cable 3 m 1 unit
Ref. 0024563



Manual 1 unit
Ref. 0027876

CSR includes:



Cartridge Exchanger for Robot 1 unit
According to purchased reference, included either
Ref. CS2R245-B or
Ref. CS2R470-B



Screw 2 unit
DIN 912 M6x20
Ref. 0842925



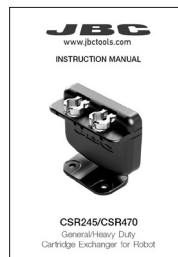
Washer 2 unit
DIN 125 Ø6.4 mm INOX
Ref. 0919480



Upper Center Jig 1 unit
Ref. 0023652 for CS2R245-B
Ref. 0023625 for CS2R470-B



Lower Center Jig 1 unit
Ref. 0029067 for CS2R245-B
Ref. 0029055 for CS2R470-B



Manual 1 unit
Ref. 0027877

CLMRP includes:



Tip Cleaner for Robot with Fiber Brushes 1 unit
Ref. CLMR-PA



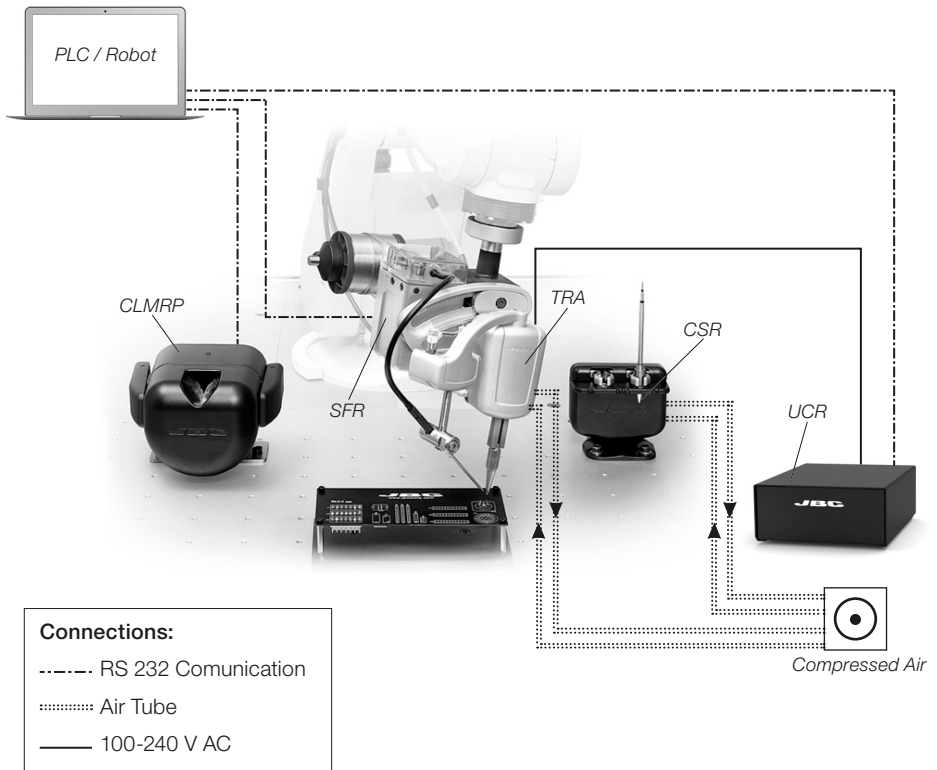
Fiber Brushes 1 pair
Ref. CL2008
(2 brushes - already assembled)

Connector Cable (3 m) 1 unit
Ref. 0024563



Manual 1 unit
Ref. 0029764

Features and Connections



Further information can be found in the instruction manuals for the individual products, which are contained in their respective product boxes.

For SFR, download the Robot Communication Protocol from www.jbctools.com/jbcsoftware.html

Maintenance and Safety

Follow the instructions in the individual instruction manuals, included in each product box.

Specifications

HA245/HA470

Automatic General/Heavy Duty Soldering Set for Robot

Ref.: **HA245A-5B**

Ref.: **HA470A-5B**

HA245A-5B

- Total Package Dimensions/Weight:	425 x 360 x 433 mm / 11.31 kg
(L x W x H)	16.73 x 14.17 x 17.05 in / 24.93 lb

HA470A-5B

- Total Package Dimensions/Weight:	425 x 360 x 433 mm / 11.26 kg
(L x W x H)	16.73 x 14.17 x 17.05 in / 24.82 lb

Complies with CE standards.
ESD safe.

JBC

Warranty

JBC's 2 year warranty covers this equipment against all manufacturing defects, including the replacement of defective parts and labor.

Warranty does not cover product wear or misuse.

In order for the warranty to be valid, equipment must be returned, postage paid, to the dealer where it was purchased.



This product should not be thrown in the garbage.

In accordance with the European directive 2012/19/EU, electronic equipment at the end of its life must be collected and returned to an authorized recycling facility.

