

JBC

www.jbctools.com

INSTRUCTION MANUAL



GSFR

Guide Kit for Robot with/without
Solder Wire Perforation

This manual corresponds to the following references:

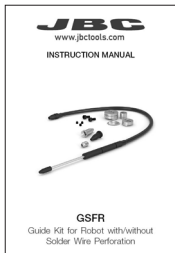
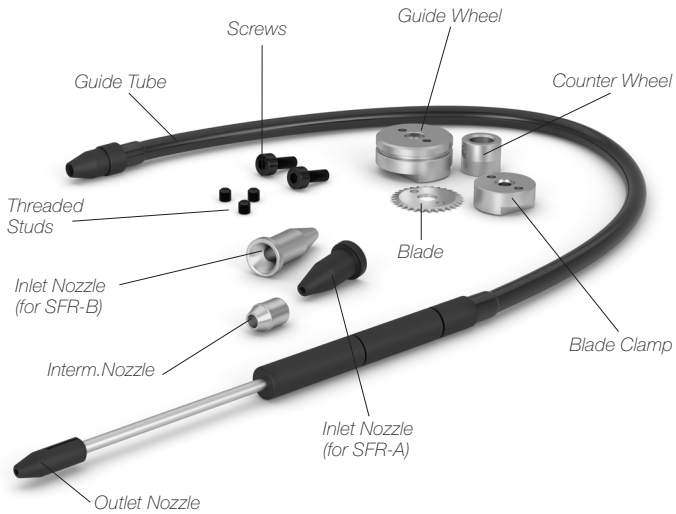
GSFR..V.. With Solder Wire Perforation - described on page 8 of this manual.

GSFR..D.. Without Solder Wire Perforation - described on page 9 of this manual.

Packing List

Guide Kit for Robot with Solder Wire Perforation

The following items are included. See Exploded View (page 8) for references.

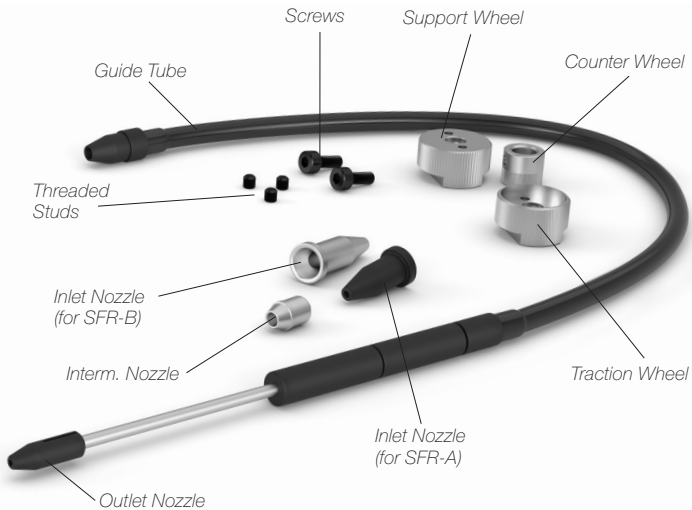


Manual 1 unit
Ref. 0021649

Packing List

Guide Kit for Robot without Solder Wire Perforation

The following items are included. See Exploded View (page 9) for references.



Features

The Guide Kit GSFR is designed to be used with the Solder Feeder SFR in automatic soldering processes.

Manual 1 unit
Ref. 0021649

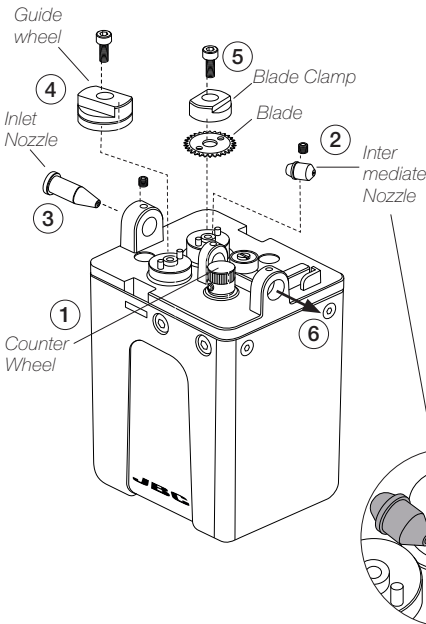
Assembly: GSFR Wheels to SFR

For this operation, disconnect the device, and take off the cover by pressing the tabs.

First disassemble the guide tube (6), the nozzles (1)+(4), then the Wheels, Blade and Clamp (2)+(3). Disassemble the Counter Wheel (5). Use the allen key and the spanner, provided with SFR.

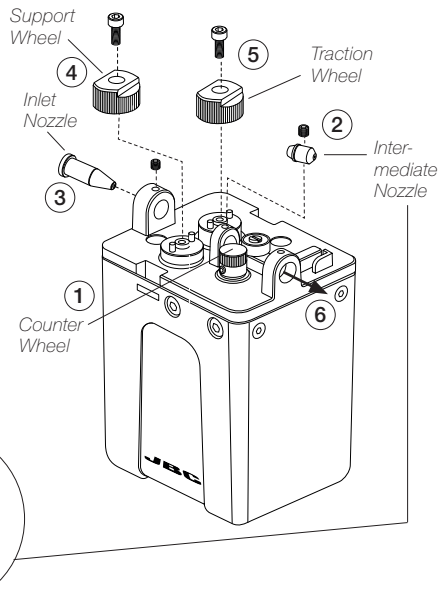
Assembly with Solder Wire Perforation

1. Assemble the counter wheel (1).
2. Insert the intermediate nozzle (2) until its collar rests against the housing and tighten the screw.
3. Assemble the inlet nozzle (3) and tighten the screw.
4. Assemble the guide wheel (4) and tighten the screw. **Attention:** Always use the correct wheel set for each wire thickness.
5. Assemble the blade first, then mount the blade clamp (5) onto the same axis and tighten the screw. **Caution:** handle the blade carefully to avoid injury.



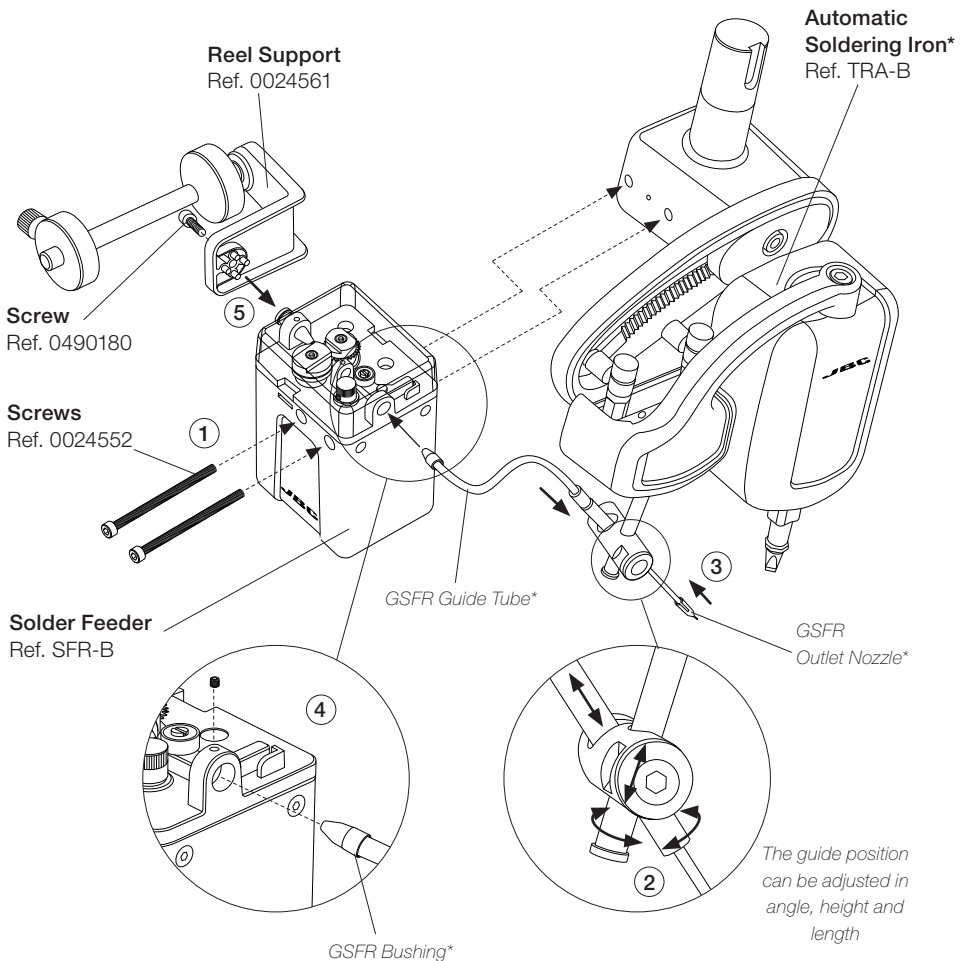
Assembly without Solder Wire Perforation

1. Assemble the counter wheel (1).
2. Insert the intermediate nozzle (2) until its collar rests against the housing and tighten the screw.
3. Assemble the inlet nozzle (3) and tighten the screw.
4. Assemble the support wheel (4) and tighten the screw. **Attention:** Always use the correct wheel set for each wire thickness.
5. Assemble the traction wheel (5) onto the axis and tighten the screw.



Assembly: GSFR Tube to SFR* and TRA*

1. Assemble SFR to TRA with the screws.
2. Assemble GSFR Guide Tube to TRA and tighten the screw.
3. Assemble the Outlet Nozzle onto the Dispensing Tube.
4. Assemble GSFR Bushing into SFR hole and tighten the screw.
5. Finally attach the Reel Support to SFR with its screw.



*Not included, sold separately

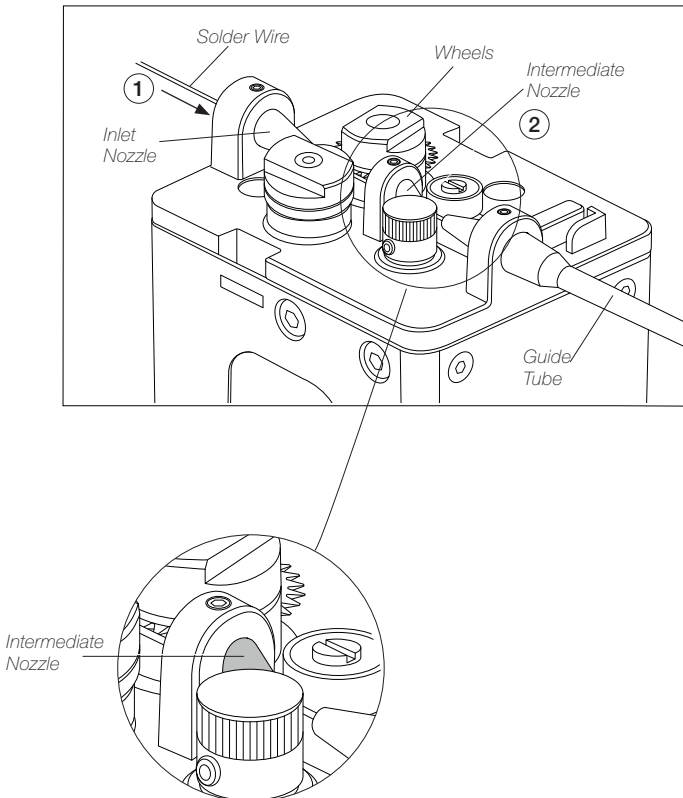
Solder Wire Loading

GSFR must be assembled previously.

1. Feed the Solder Wire into the Inlet Nozzle until it reaches the wheels.
2. Make sure the wire passes through the Intermediate Nozzle and enters into the Guide Tube.

Important: Set the wire thickness parameter before starting to dispense the wire. To set W-THI command see the Communication Protocol for SFR unit at www.jbctools.com/jbcsoftware.html.

Wire feeding is controlled by an external controller (Robot/PLC/Computer). To start wire loading process use W-SLD command. See the Communication Protocol for SFR unit at www.jbctools.com/jbcsoftware.html



Maintenance

- Before carrying out maintenance, always unplug the tool and the device.
- Use a damp cloth to clean the tool. Alcohol can only be used to clean the metal parts.
- Periodically check that the metal parts of the mechanism are clean.
- Keep Dispensing Nozzle Tip clean to avoid solder feeding obstruction.
- Periodically check all cables and tube connections.
- Replace any defective or damaged parts. Use original JBC spare parts only.
- Repairs should only be performed by a JBC authorized technical service.

Safety



It is imperative to follow safety guidelines to prevent electric shock, injury, fire or explosion.

- Do not use the device for any other purpose.
- Be sure that the power supply is disconnected before changing any spare part.
- Avoid flux coming into contact with skin or eyes to prevent irritation.
- Be careful of fumes produced while soldering.
- Keep your workplace clean and tidy. Wear appropriate protective glasses and gloves while handling components to avoid personal injury.
- Utmost care must be taken with liquid tin waste which can cause burns.

Exploded View

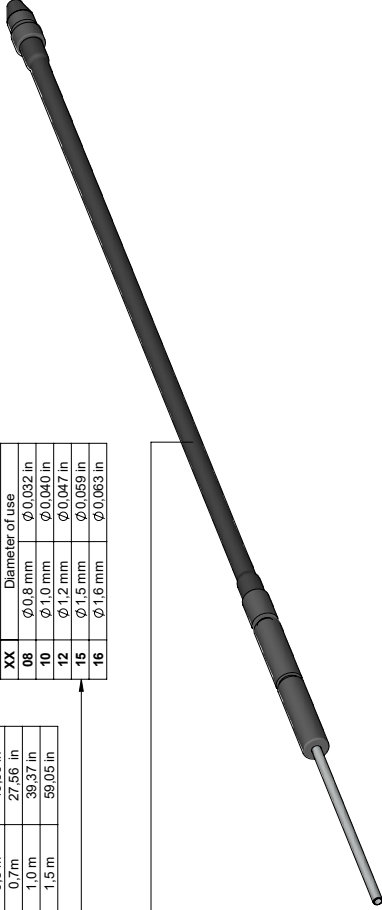
WITH SOLDER WIRE PERFORATION

GSFR XX V LL

Tube length	
LL	Length
03	11.81 in
04	15.75 in
05	19.69 in
07	27.56 in
10	39.37 in
15	59.05 in

Wire diameter	
XX	Diameter of use
08	Ø 0.8 mm
10	Ø 1.0 mm
12	Ø 1.2 mm
15	Ø 1.5 mm
16	Ø 1.6 mm

Guide kit Ref.	Guide tube Ref.
GSFR08X03	0025344
GSFR08X05	0025311
GSFR08X07	0025345
GSFR08X10	0025346
GSFR10X03	0025347
GSFR10X10	0025348
GSFR12X03	0025349
GSFR12X10	0025350
GSFR15X03	0025351
GSFR15X04	0025352
GSFR15X05	0025353
GSFR16X03	0025354
GSFR16X05	0025355
GSFR16X04	0025776

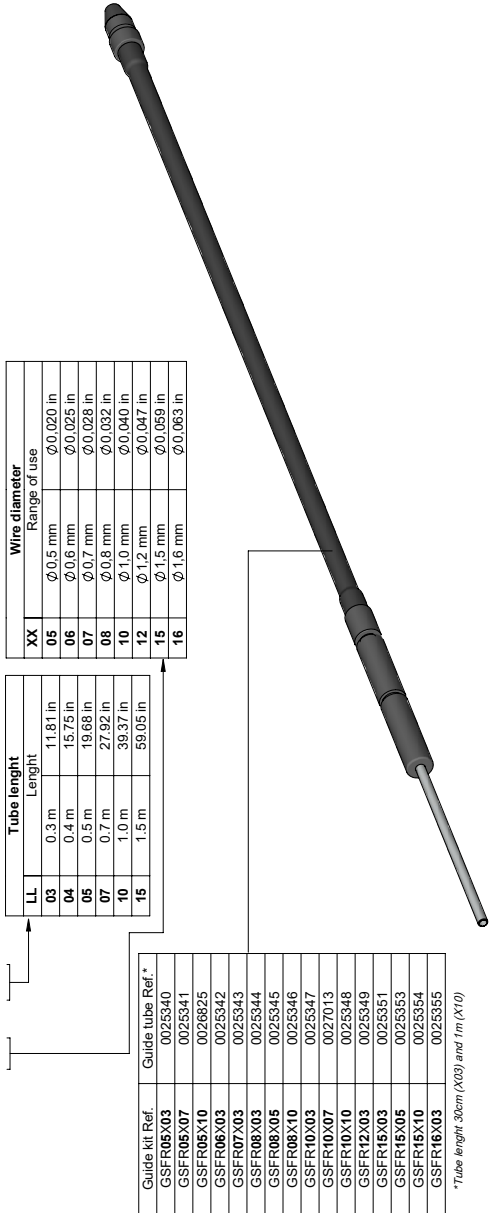


Tube length	Wire Ø	Outlet nozzle Ref.	Guide wheel Ref.	Blade Ref.	Blade clamp Ref.	Inlet nozzle Ref. (for SFR-V)	Interm. nozzle Ref.	Inlet nozzle Ref. (for SFR-S)	Counter wheel Ref.	Screws Ref.	Threaded stud Ref.
GSFR08VLL		0025270	0021696								
GSFR10VLL		0021660	0021699			0023740	0024955	0024878	0028698 (Provide with SFR)	0028695 (x2)	0028696 (x3)
GSFR12VLL		0025272	0023738	0021555	0018638	0023741	0024956	0024877			
GSFR15VLL		0025274	0025285			0023736	0024957	0024878			
GSFR16VLL		0025276	0025922			0023955	0024958	0026699	0026694		
						-	0024959	0026697			

Exploded View

WITHOUT SOLDER WIRE PERFORATION

GSFR XX D LL



XX	Wire diameter	
	Range of use	
05	Ø0.5 mm	Ø0.020 in
06	Ø0.6 mm	Ø0.025 in
07	Ø0.7 mm	Ø0.028 in
08	Ø0.8 mm	Ø0.032 in
10	Ø1.0 mm	Ø0.040 in
12	Ø1.2 mm	Ø0.047 in
15	Ø1.5 mm	Ø0.059 in
16	Ø1.6 mm	Ø0.063 in

LL	Tube length
03	0.3 m 11.81 in
04	0.4 m 15.75 in
05	0.5 m 19.68 in
07	0.7 m 27.92 in
10	1.0 m 39.37 in
15	1.5 m 59.05 in

Guide kit Ref.	Guide tube Ref.*
GSFR05X03	0025340
GSFR05X07	0025341
GSFR05X10	0028825
GSFR06X03	0025342
GSFR07X03	0025343
GSFR08X03	0025344
GSFR08X05	0025345
GSFR08X10	0025346
GSFR10X03	0025347
GSFR10X07	0027013
GSFR10X10	0025348
GSFR12X03	0025349
GSFR15X03	0025351
GSFR15X05	0025353
GSFR15X10	0025354
GSFR16X03	0025355

*Tube length: 30cm (X03) and 1m (X10)

Tube length	Wire Ø	Outlet nozzle Ref.	Traction wheel Ref.	Support wheel Ref.	Inlet nozzle Ref. (for SFR-X)	Interm. nozzle Ref.	Inlet nozzle Ref. (for SFR-B)	Counter wheel Ref.	Screws Ref.	Threaded stud Ref.
GSFR05D LL	0025268									
GSFR06D LL	0022994			0019519		0024954				
GSFR07D LL	0025289					0025293				
GSFR08D LL	0025270				0023740	0024955	0025297	0026693		
GSFR10D LL	0021560		0019479	0019480	0023741	0024956	0024876	(Provided with SFR)	0026695 (x2)	0026696 (x3)
GSFR12D LL	0025272				0023736	0024957	0024877			
GSFR15D LL	0025274			0019481	0023855	0024958	0026698	0026694		
GSFR16D LL	0025276				0023855	0024959	0026697			

Specifications

GSFR

Guide Kit for Robot

Ref.: **GSFR..V..** With Solder Wire Perforation (Ref. described on page 8 of this manual)

Ref.: **GSFR..D..** Without Solder Wire Perforation (Ref. described on page 9 of this manual)

- | | |
|---|---|
| - Total Net Weight: | 42 g / 0.093 lb |
| - Total Package Dimensions / Weight:
(L x W x H) | 245 x 185 x 45 mm / 117 g
9.65 x 7.28 x 1.77 in / 0.258 lb |

Complies with CE standards.
ESD safe.

JBC

Warranty

JBC's 2 year warranty covers this equipment against all manufacturing defects, including the replacement of defective parts and labour.

Warranty does not cover product wear or misuse.

In order for the warranty to be valid, equipment must be returned, postage paid, to the dealer where it was purchased.

Get 1 extra year JBC warranty by registering here:
<https://www.jbctools.com/productregistration/>
within 30 days of purchase.



This product should not be thrown in the garbage.

In accordance with the European directive 2012/19/EU, electronic equipment at the end of its life must be collected and returned to an authorized recycling facility.

