

JBC

www.jbctools.com

Product
website



INSTRUCTION MANUAL



SB03CC

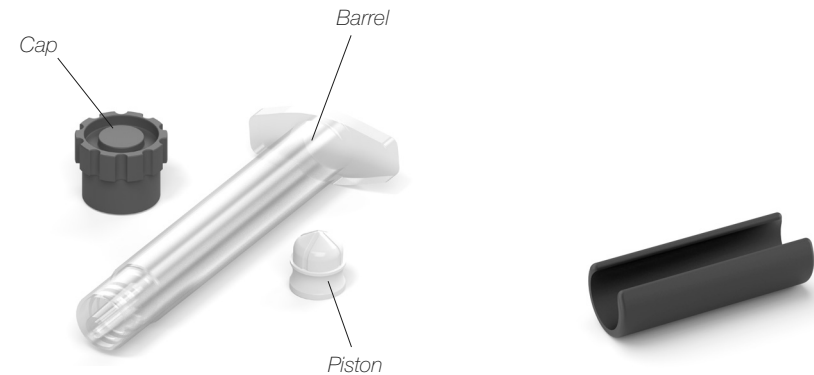
3cc Syringe Barrel

This manual corresponds to the following reference:

SB03CC

Packing List

The following items are included:



3cc Syringe Barrel 5 units

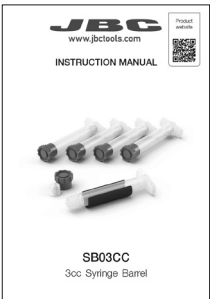
includes (5 units each):

Barrel Ref. 0029412

Piston Ref. 0029416

Cap Ref. 0029407

Syringe Adapter 1 unit

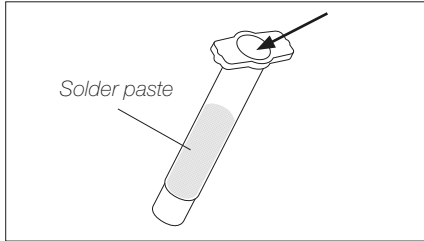


Manual 1 unit
Ref. 0027449

Operation

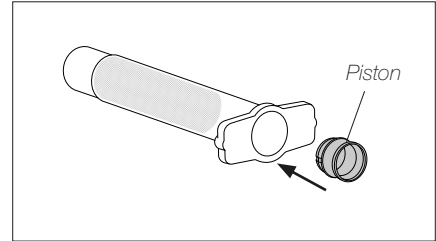
SB03CC syringes are designed to be used with JBC DPM* Manual Solder Paste Dispenser, ND-KS* needles and ND-KP* tapered tips.

1. Barrel Filling



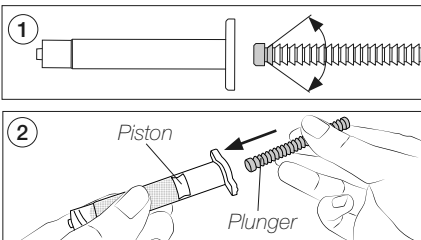
Fill in the syringe barrel with solder paste.

2. Piston Placement



Fit the piston into the barrel.

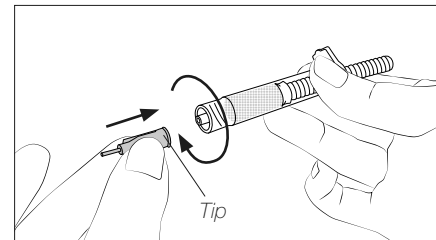
3. Plunger Placement



1. Note that the plunger enters with its head forward in the syringe barrel and the direction of the teeth angle corresponds to the upper image. Otherwise, DPM will not work properly.

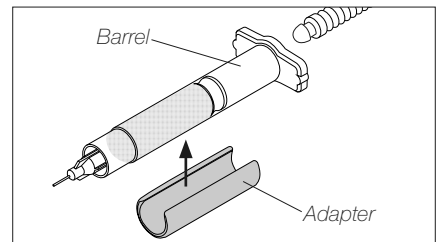
2. Insert the plunger into the piston and press the piston against the solder paste to remove the air inside the barrel.

4. Tip Placement



Screw the tip onto the syringe barrel.

5. Adapter Use (for 3cc syringe only)



For 3 cc syringes in use with DPM, the enclosed adapter is needed. Assemble the adapter by clipping it onto the barrel.

Specifications

SB03CC

3cc Syringe Barrel

Ref.: **SB03CC**

- Volume Capacity: 3 cc / 0.1 fl oz
- Weight: 0.02 kg / 0.04 lb
- Total Package Dimensions / Weight: 90 x 55 x 40 mm / 0.03 kg
(L x W x H) 3.54 x 2.17 x1 .57 in / 0.07 lb

Complies with CE standards.



Warranty

JBC's 2 year warranty covers this equipment against all manufacturing defects, including the replacement of defective parts and labor.

Warranty does not cover product wear or misuse.

In order for the warranty to be valid, equipment must be returned, postage paid, to the dealer where it was purchased.



This product should not be thrown in the garbage.

In accordance with the European directive 2012/19/EU, electronic equipment at the end of its life must be collected and returned to an authorized recycling facility.

