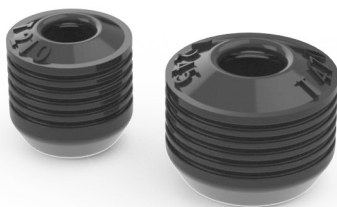




[www.jbctools.com](http://www.jbctools.com)

## INSTRUCTION MANUAL



### **OB1000 / OB2000**

Sealing Plugs for T210, T245,  
T470 and ALE250

This manual corresponds to the following references:

Ref. **OB1000** for T210

Ref. **OB2000** for T245, T470 and ALE250

## Packing list

The following items are included:

OB2000



OB1000




**Sealing Plug  
for Handles** ..... 1 set

*each set contains 10 plugs*

**Manual** ..... 1 unit  
Ref. 0025439

## Use of the Sealing Plug

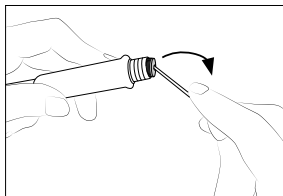
OB1000 (for T210) and OB2000 (for T245, T470 and ALE250) prevent undesirable flux vapors or particles from entering the handle and its usage is highly recommended.

 If the sealing plug is not used, this can lead to incorrect cartridge contact and may render the handle unusable.

**Important:** Check the condition of the sealing plug periodically and replace it as soon as wear or cracking is detected.

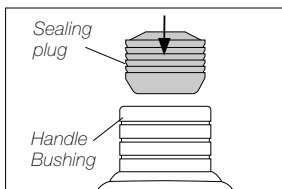
## Replacing Sealing Plugs

⚠ Before replacing the sealing plug, unplug the power supply and make sure that the handle and the cartridges are not hot.



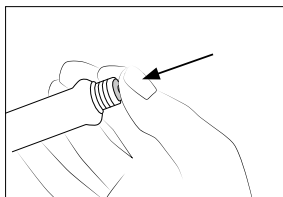
### Removing Sealing Plug

Introduce a small shaft or screwdriver, not deeper than 8 mm, lift and pull the worn sealing plug out. Never use a cartridge to do this operation.



### Mounting position

**Note:** To insert the new sealing plug, the chamfered side must be positioned towards the handle.



### Inserting Sealing Plug

Gently push the sealing plug inside the handle until it is placed completely into the handle bushing. The sealing pug and the handle bushing edges have to be aligned.

# Specifications

## Sealing Plug for T210, T245, T470 and ALE250

Ref. **OB1000** for T210

- |                                    |                                |
|------------------------------------|--------------------------------|
| - Total Net Weight:                | 4 g / 0.14 oz                  |
| - Total Package Dimensions/Weight: | 92 x 55 x 41 mm / 14 g         |
| (L x W x H)                        | 3.62 x 2.17 x 1.61 in / 0.5 oz |

Ref. **OB2000** for T245, T470 and ALE250

- |                                    |                                 |
|------------------------------------|---------------------------------|
| - Total Net Weight:                | 6 g / 0.21 oz                   |
| - Total Package Dimensions/Weight: | 92 x 55 x 41 mm / 16 g          |
| (L x W x H)                        | 3.62 x 2.17 x 1.61 in / 0.56 oz |

Complies with CE standards.

# JBC

## Warranty

JBC's 2 year warranty covers this equipment against all manufacturing defects, including the replacement of defective parts and labour.

Warranty does not cover product wear or misuse.

In order for the warranty to be valid, equipment must be returned, postage paid, to the dealer where it was purchased.



This product should not be thrown in the garbage.

In accordance with the European directive 2012/19/EU, electronic equipment at the end of its life must be collected and returned to an authorized recycling facility.



[www.jbctools.com](http://www.jbctools.com)

0025439-150725