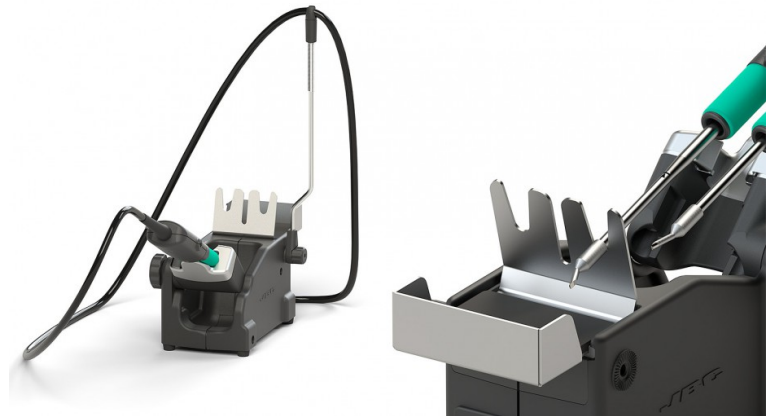


Stand for HT420 HT-SE



Specifications

Included	Sleep mode
Net weight	1,41 kg (3.11lb)
Package weight	1,69 kg (3.72lb)
Package dimensions	342 x 155 x 120 mm (13.46 x 6.10 x 4.72 in)

Connectables

Modular System

1 Tool Control Unit
DI



2 Tools Control Unit
DDE



4 Tools Control Unit
DME



Compatible tools

Thermal Tweezers
HT420-A



Connectables

Accessories

Cable collector
CC3702



Documentation

Manuals

PA-SE / HT-SE Manual