



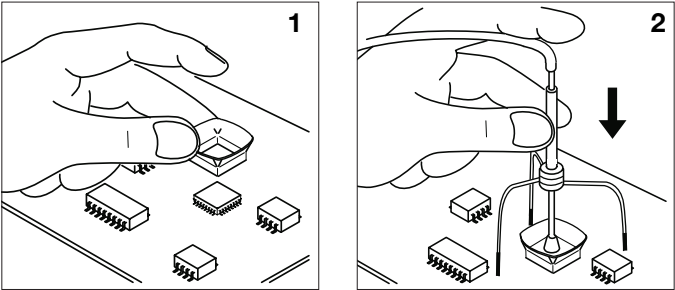
www.jbctools.com

English

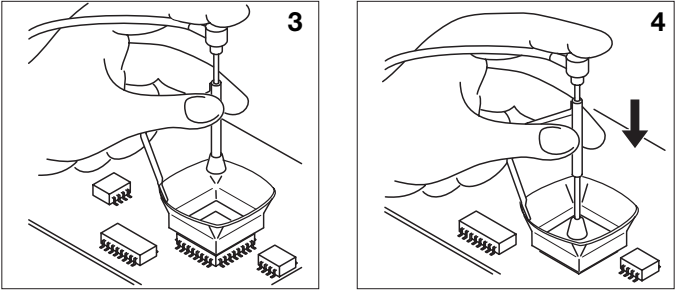


Protectors & Extractors

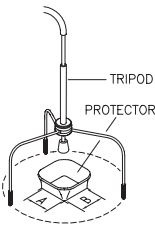
Operation



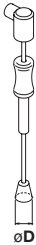
To desolder small components you must use the protector + tripod as shown in drawings 1 and 2.



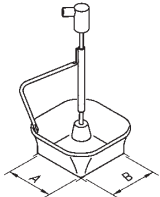
For bigger components use the extractors (fig. 3 and 4).



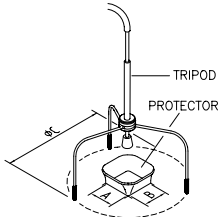
PROTECTORS					
*	REF.	AxB (mm)	*	REF.	AxB (mm)
	P3353	4,3 x 3	44	P4000	12,5 x 12,5
	P3786	5,2 x 5,2		P1593	13 x 31,5
	P3352	5,2 x 7,5		P3354	13,2 x 13,2
	P3355	5,2 x 9,5		P4025	13,5 x 21,5
	P3356	6,2 x 4,2	48	P2230	15 x 15
	P3785	7,2 x 7,2	60	P4010	17 x 17
	P3784	8,2 x 8,2		P4005	18 x 29
	P4035	9 x 13		P4030	18,5 x 18,5
	P4040	9,5 x 19		P1068	18,5 x 24
	P4080	9,5 x 21		P2685	28,5 x 28,5
32	P2220	10 x 10		P4085	31,5 x 31,5
	P4045	10,5 x 21		P2672	33 x 46
	P4090	11 x 16		P4002	50 x 50
24	P2235	12 x 17		P3357	52,5 x 14
	P1249	12 x 23			



MANUAL EXTRACTOR	
REF.	øD (mm)
E2190	7



EXTRACTORS					
*	REF.	AxB (mm)	*	REF.	AxB (mm)
52	E2052	20 X 20		E4015	31,5 X 31,5
64	E2064	20 X 26	84	E2084	33 X 33
80	E2184	24 X 24		E2100	38 X 38
68	E2068	27 X 27		E2124	45 X 45
	E4020	28,5 X 28,5			



TRIPODS	
REF.	øC (mm)
T2050	39
T2250	85



WARRANTY

JBC's 2 year warranty covers this equipment against all manufacturing defects, including the replacement of defective parts and labour.

Warranty does not cover product wear due to use or mis-use.

In order for the warranty to be valid, equipment must be returned, postage paid, to the dealer where it was purchased.



This product should not be thrown in the garbage.

In accordance with the European directive 2002/96/EC, electronic equipment at the end of their life must be collected and returned to an authorized recycling facility.