

Remote Manager

User's Guide

OM31601/0116

Remote Manager Version: 3.16.01.0

Remote Register Manager Version: 3.16.01.0

Remote Connect Library DLL Version: 3.16.01.0

Contents

Introduction	4
System Requirements	4
NET Framework 4.5.1	4
Download and install NET Framework 4.5.1	4
Supported Stations	5
Program Description	6
Main Window	6
Menu	8
File	8
View	8
View - Languages	8
View – Temperature Unit	8
Tools	8
Windows	8
Station List	9
List format	9
Tree format	9
Station List Popup Menu	9
Station List Position and Style	10
Grouping stations	11
Station Window	12
Monitor and Control Modes	13
Work Panel	14
Switching to other Port	14
Work Panel with Temperature Levels	15
Work Panel with Fixed Temperature	15
Sleep or Hibernation Status	16
Station Settings Panel	17
Tools Settings Panel	18
Load/Save Settings Panel	19
Reset Station Settings Panel	20
Counters Panel	21
Station Data Panel	22
Modifying Station Settings	22
Editing settings	22
Editing switching settings	22
Station Graphics Panel	23
Settings Manager	25
Source Settings Panel	26
Loading Settings	26

Save Settings to Configuration File	26
Printing Settings.....	26
Selecting Settings to apply to target stations	26
Modifying Settings	27
Editing Settings.....	27
Editing Switching Settings	27
Copying/Pasting Settings.....	27
Target Stations Panel.....	29
Listing and Filtering Target Stations	29
Selecting Stations and Ports.....	30
Applying Source Settings to Target Stations	30
Viewing a Report	31
Register Manager - Plotting	32
Control Bar	32
File	32
Configuration	33
Coordinates	33
Zoom	33
Default Zoom	33
Trigger Type.....	33
Record and Play Controls	33
Plotting with the Wizard option	34
Trigger	35
History	37
Version 0715	37

Introduction

The JBC Remote Manager program is part of the Open Manager environment and allows you to monitor and configure JBC stations connected to Station Controller PCs through USB connector or JBC stations with Ethernet connections. These stations are controlled by the JBC Host Service program installed in the Station Controller PC.

The JBC Remote Manager program uses JBC Connect Remote Library DLL to communicate with Station Controllers.

For USB connections, the proper USB to UART bridge driver must be installed in the Station Controller PC. This driver is provided with the JBC Host Service distribution.

System Requirements

Operating System: Windows Vista/ 7 / 8 / 8.1 with NET Framework 4.5.1

Processor: Intel i3

RAM: at least 1GB, 2GB recommended

Hard disk: 2MB available hard disk space

NET Framework 4.5.1

Supported Operating System

Windows 7 Service Pack 1

Windows 8

Windows Vista Service Pack 2

Download and install NET Framework 4.5.1

[Microsoft NET Framework 4.5.1 \(Web Installer\)](#), requires an Internet connection.

[Microsoft NET Framework 4.5.1 \(Standalone Installer\)](#)

Supported Stations

The JBC stations supported by the Open Manager environment are listed below. The minimum station program version needed is showed for each station model.

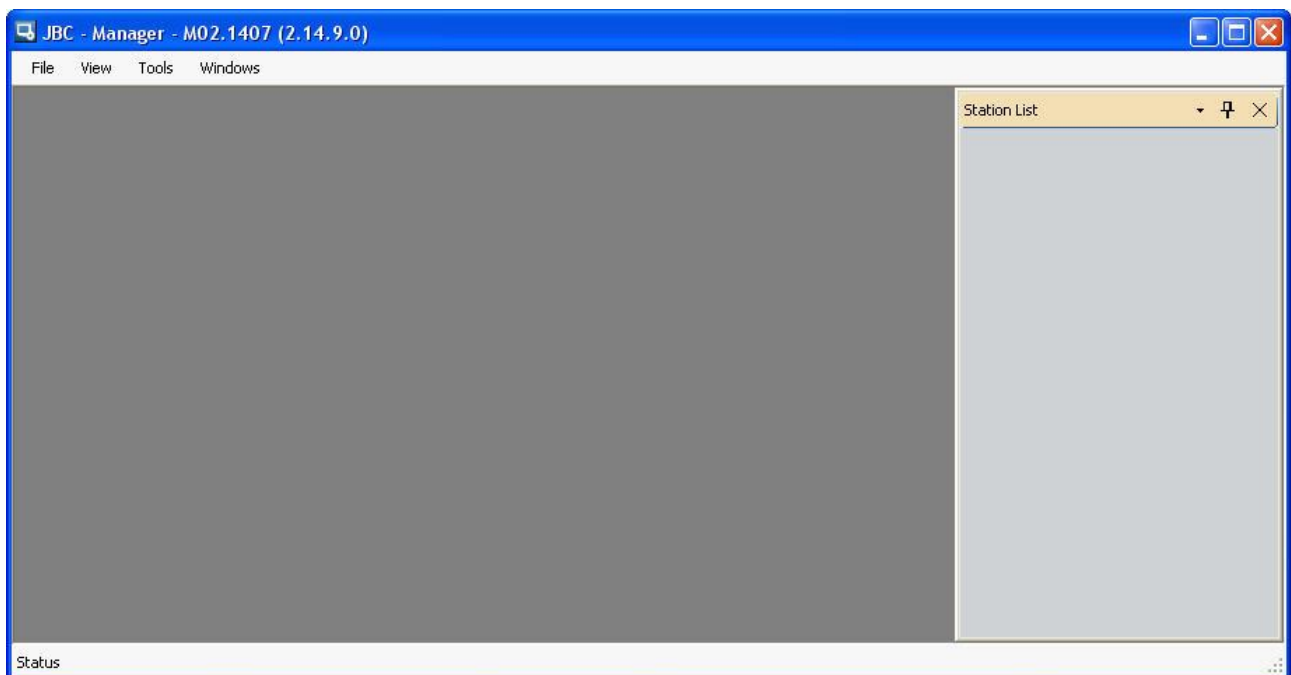
Station	Minimum program version needed
DM	9996761
DD	9996762
DDR	9996779
DI	9996763
HD	9996764
HDR	9996780
CD/CF	9996765
CS/CV	9996766
CP	9996767
NA	9996768
DDE, HDE, DME, NAE	All

Program Description

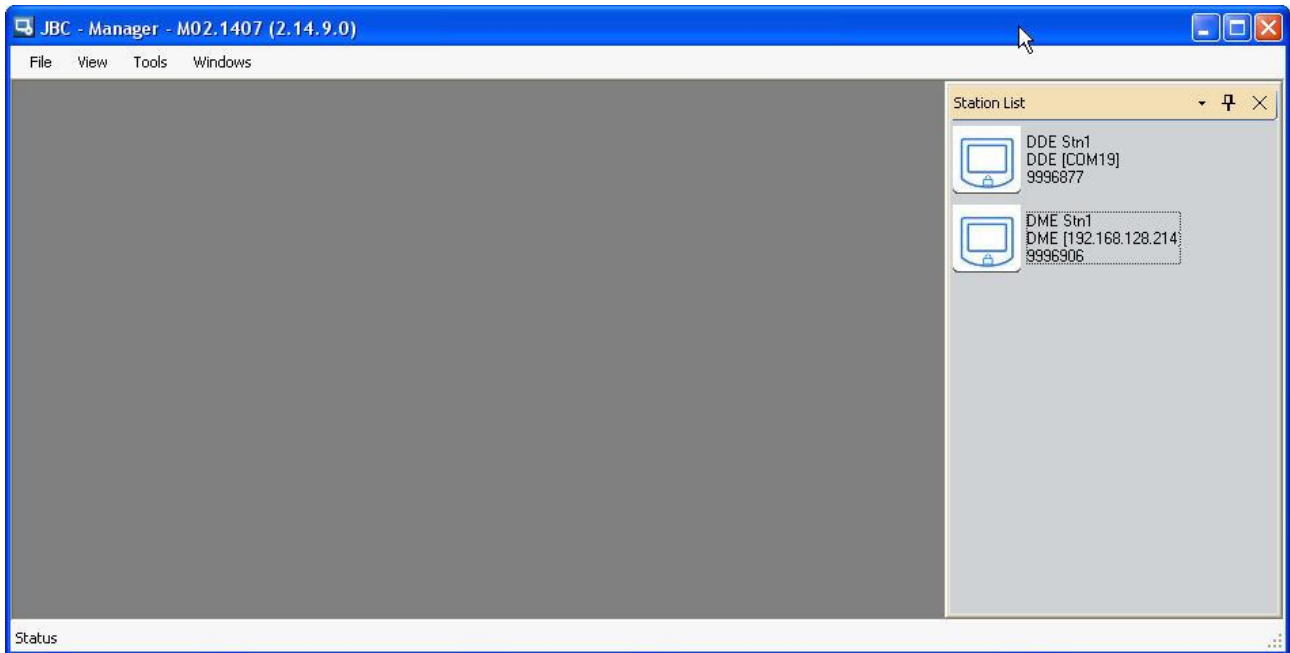
The Remote Manager program allows you to perform the following tasks:

- Monitor active stations connected to Station Controller PCs by USB or Ethernet connectors
- View and modify station settings
- Save, load and print station settings
- Perform settings changes to several stations at once
- Plot station temperature and power data

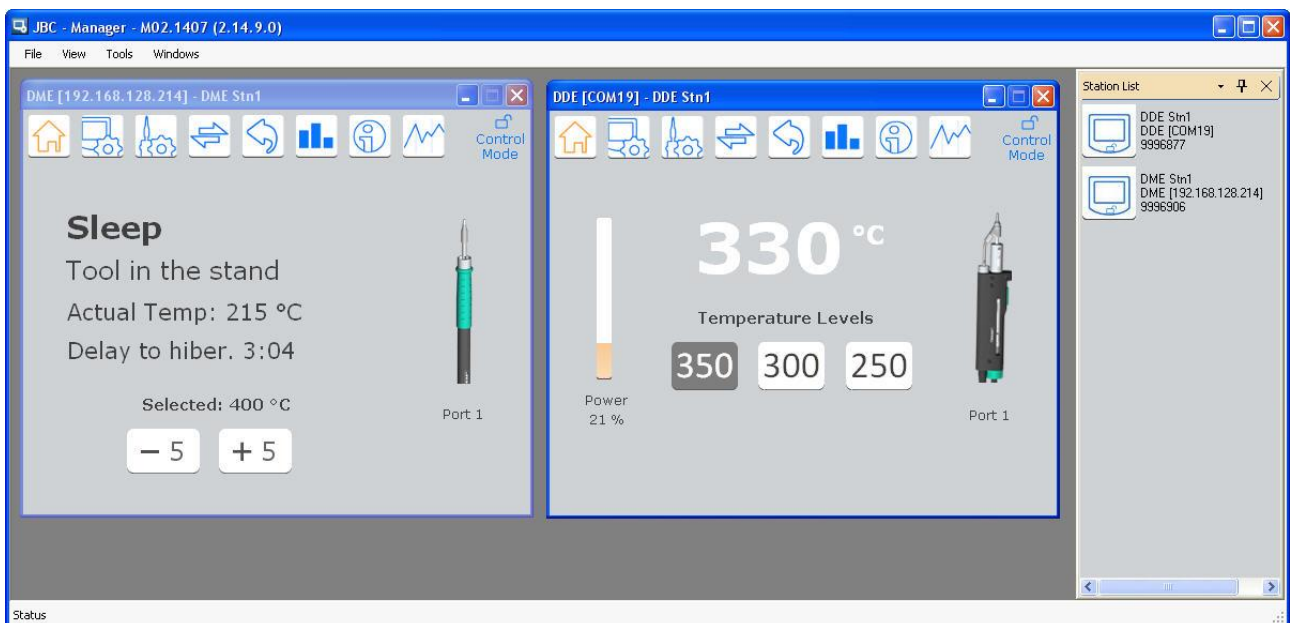
Main Window



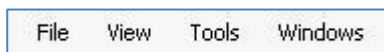
At startup, the Remote Manager program shows all connected stations in the Station List, on the right.



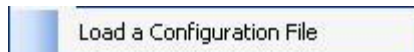
A Station Window appears by double clicking on a station icon in the Station List.



Menu



File



To load a Configuration File previously saved.

See "Load/Save Settings Panel" in page 19 and "Settings Manager" in page 25 to learn how to load, save and apply configuration settings.

View



View - Languages

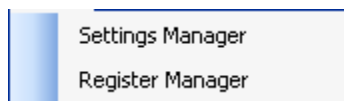


View – Temperature Unit



You can view temperature in Celsius or Fahrenheit in JBC Remote Manager windows.

Tools



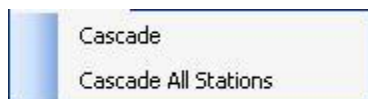
Settings Manager opens an empty Settings Manager window.

See "Settings Manager" on page 25 to learn how to modify station settings in a massive change.

Register Manager opens an empty plot area to register temperature and power data of stations.

See "Register Manager - Plotting" on page 32 to learn how to plot station data into a graphic.

Windows



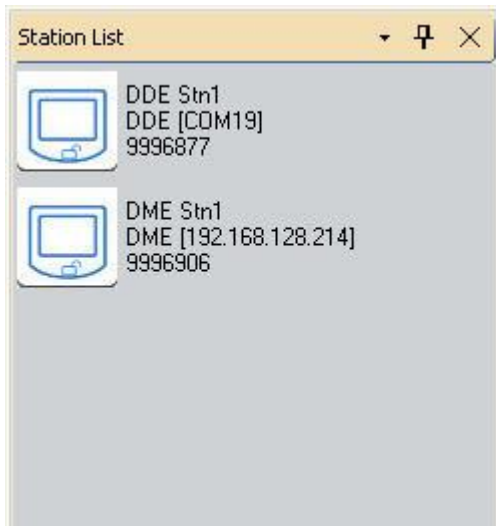
Station List

The Station List show stations as list format and tree format:

- List format shows all connected stations
- Tree format allows you to group stations for better managing them

List format

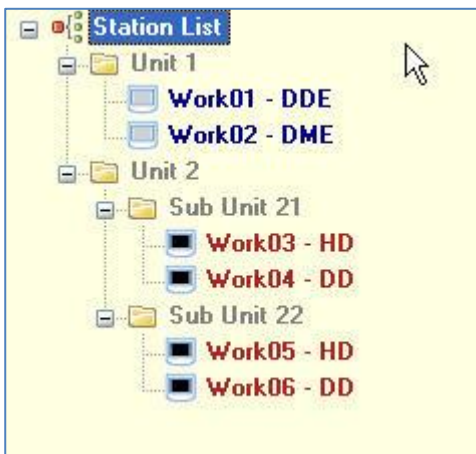
The List format shows all the connected stations as icons or table format.



Each station icon shows the station name and model, and the software version installed.

Tree format

The tree format allows you to group stations for better managing them.

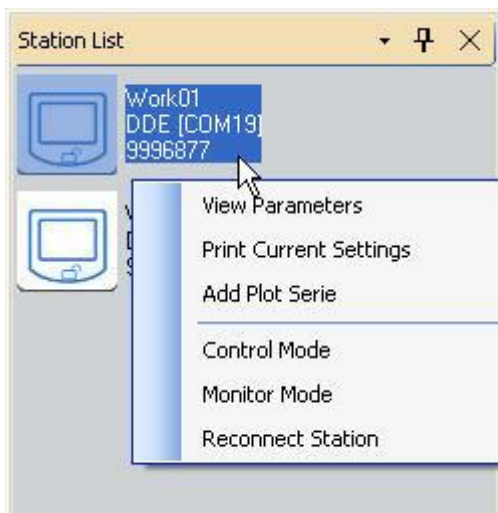


The Manager program maintains the groups and stations you define in it.

Note: Stations showed in blue text, are connected stations.

Station List Popup Menu

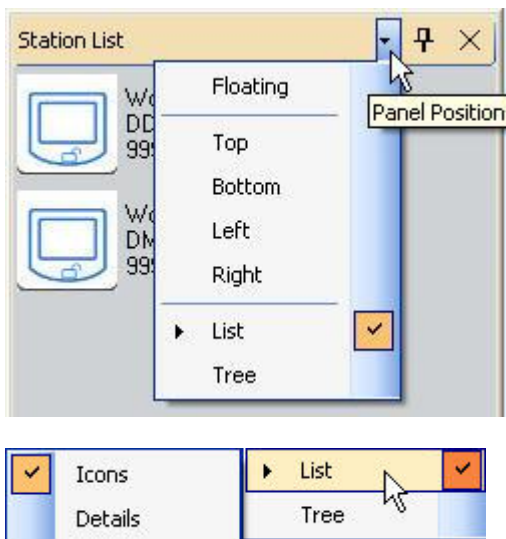
Right clicking in a station, it appears a popup menu.



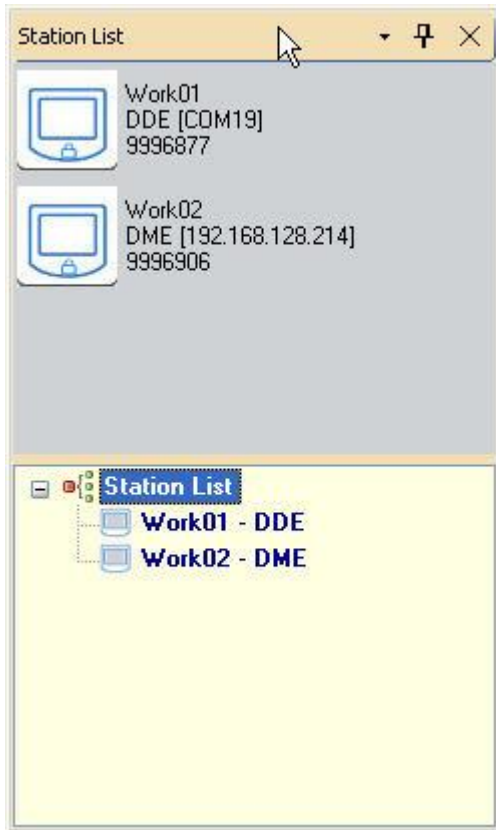
- **View Parameters:** it opens a window containing the station data and settings. It is the same as double clicking.
- **Print Current Settings:** it shows a window with the station settings. You can print the station settings from that window. See an example in "Printing Settings" in page 26.
- **Add Plot Serie:** To add series to a new plotting window. See "Register Manager - Plotting" on page 32 to learn how to plot station data into a graphic.
- **Control Mode and Monitor Mode:** To change station settings, you must enter in Control Mode. The program will ask you the station password. See "Monitor and Control Modes" in page 13.

Station List Position and Style

Use the Panel Position icon to change the position and style of the Station List



Both formats can be viewed in the Station List panel, by selecting "List" and "Tree".



Grouping stations

You can create groups of stations by selecting the root element "Station List" or group, and choosing "New Station Group" option from the popup menu. A new group is added and you can change its name.

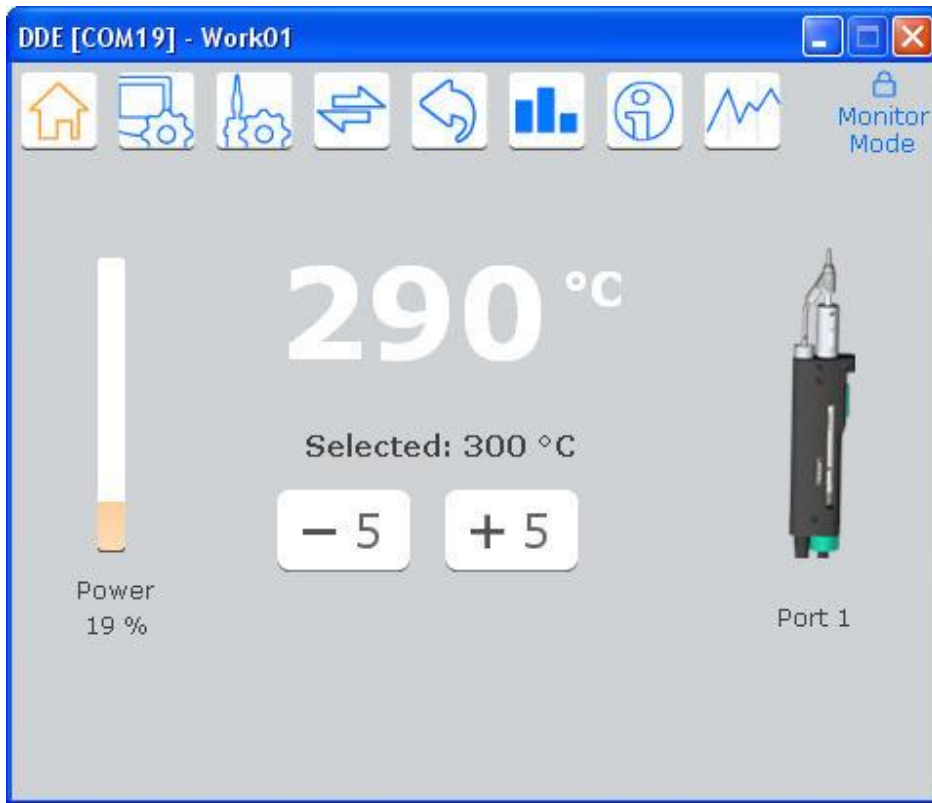


Then, drag a station to the group.



Station Window

The Station Window has the station data and settings grouped by panels. You can switch between these panels by clicking on the icons at the top of the window.



The panels are the following:

- Work Panel
- Station Settings Panel
- Tools Settings Panel
- Load/Save Settings Panel
- Reset Station Settings Panel
- Counters Panel
- Station Data Panel

Monitor and Control Modes

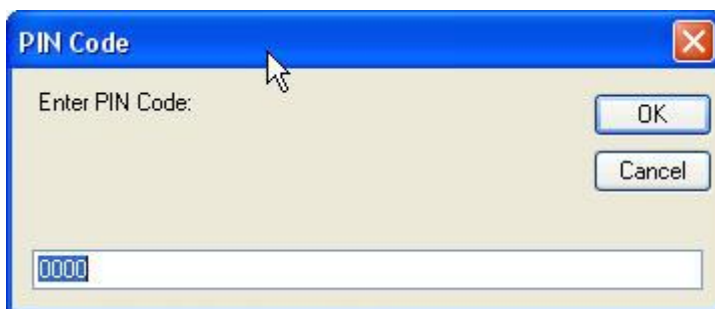
Each station has two Modes:

- In Monitor Mode you can only view data and settings. You cannot change settings.
- In Control Mode you can change some station settings.

To switch between Monitor and Control mode click on the lock icon.



To enter in Control Mode, you must enter the password (station PIN Code).



Work Panel

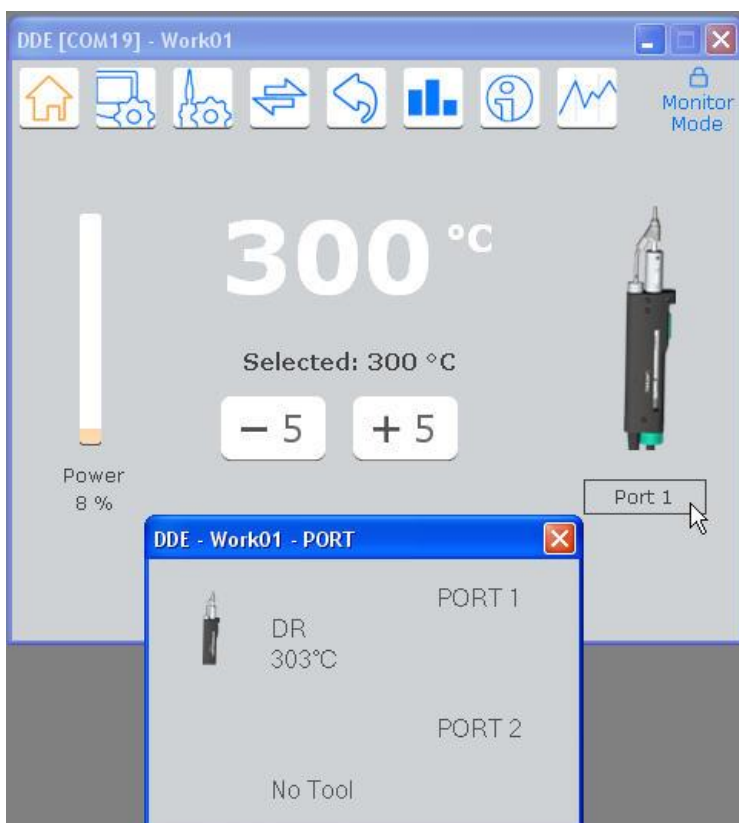
The Work Panel shows the selected port, an image of the connected tool and the actual temperature and power.

You can change the selected temperature by clicking in the -5 or +5 icons.



Switching to other Port

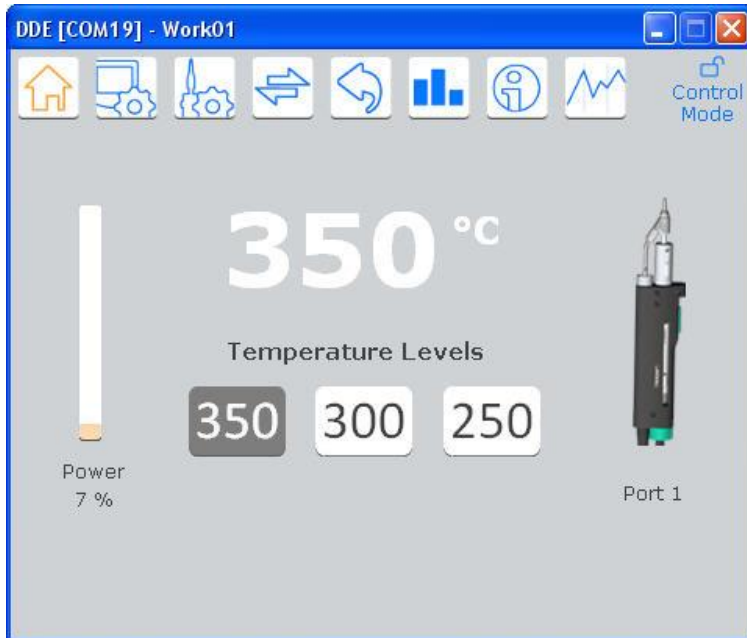
To switch to other port, click on the "Port x" rectangle and select another port.



Work Panel with Temperature Levels

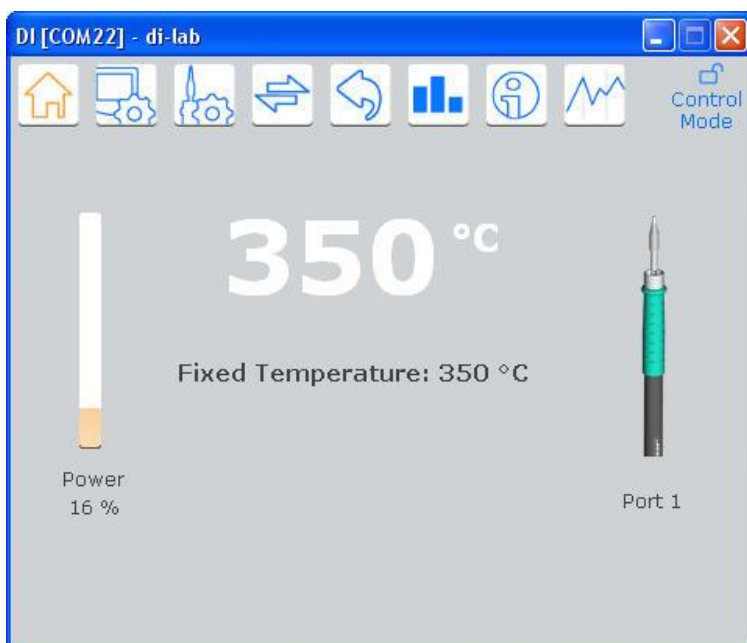
If the selected port is configured with a temperature level, you will see the levels and the current selected level.

You can change the selected level by clicking on the desired level. You can switch to a level to already have a temperature defined in it.



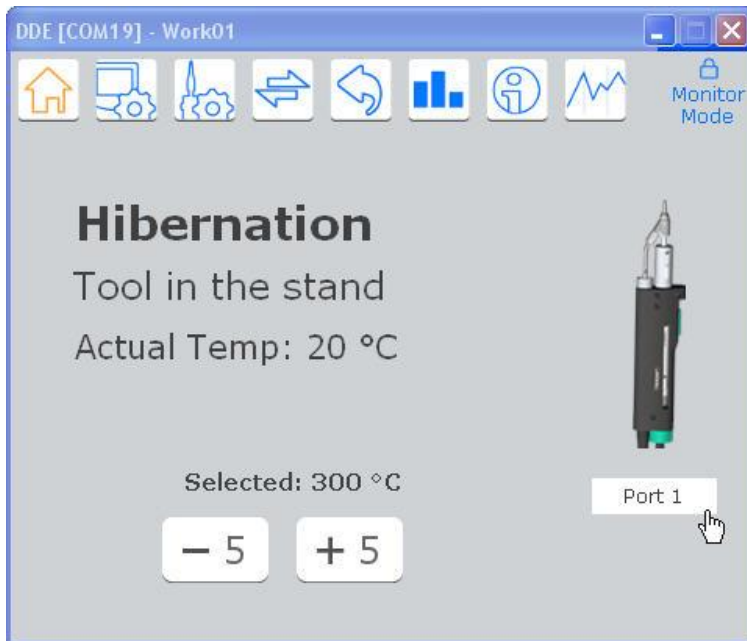
Work Panel with Fixed Temperature

If the selected port is configured with a fixed temperature, you will see the selected fixed temperature.



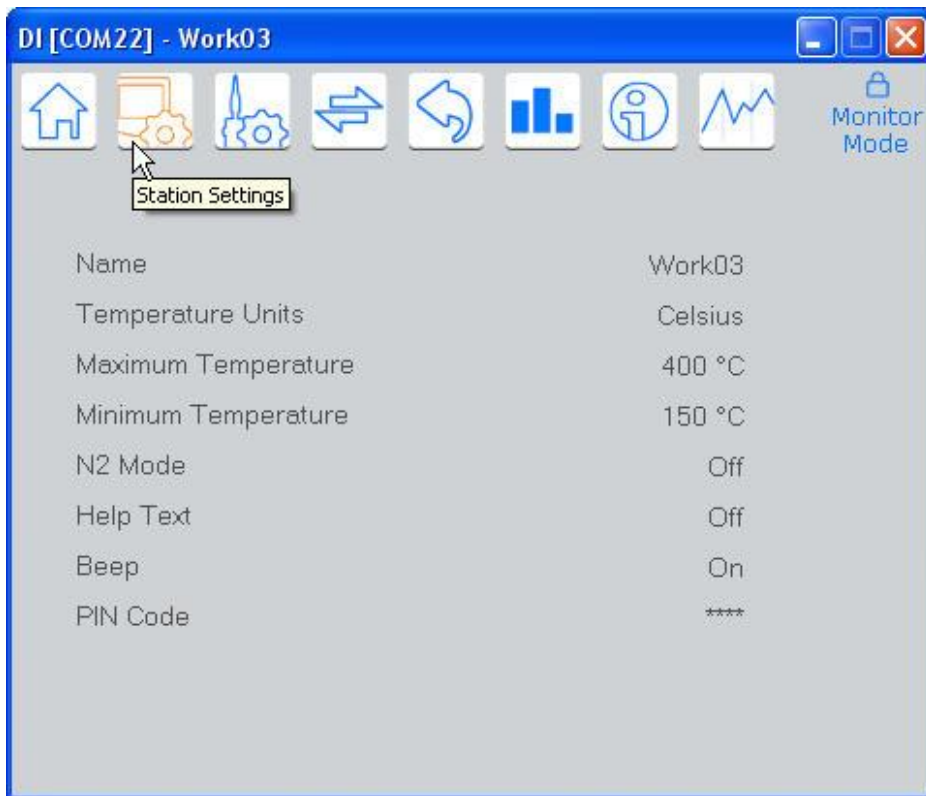
Sleep or Hibernation Status

If the station enters in a Sleep or Hibernation status, the following data will be showed.



Station Settings Panel

This panel contains station settings. You can change all of them.

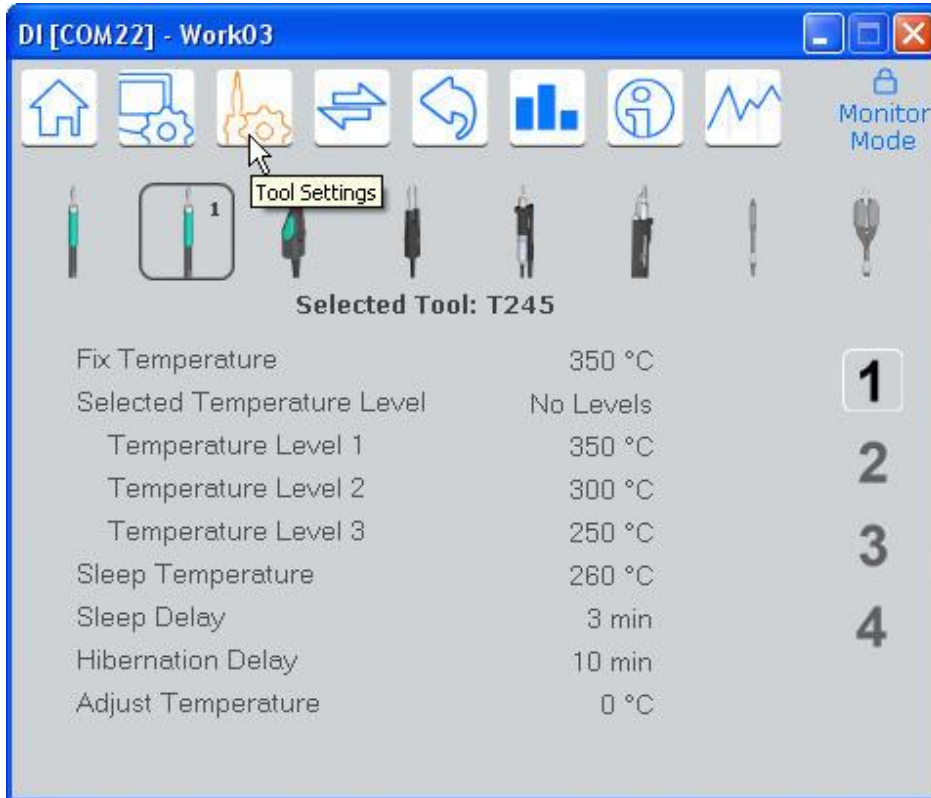



Tools Settings Panel

This panel shows Port/Tool pairs settings

The ports are showed at the right edge and the tools are showed at the top of the panel.

You can change all the settings.



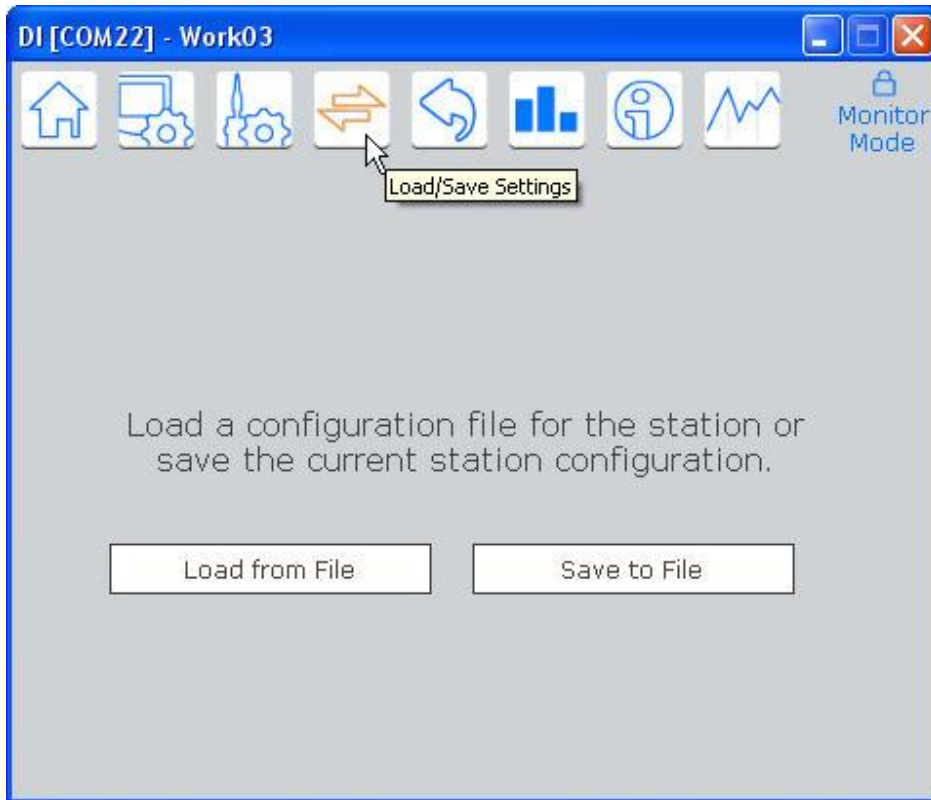
Current connected tool in the selected port is showed with a  near of the tool image.

Load/Save Settings Panel

You can save the current station settings to a configuration file.

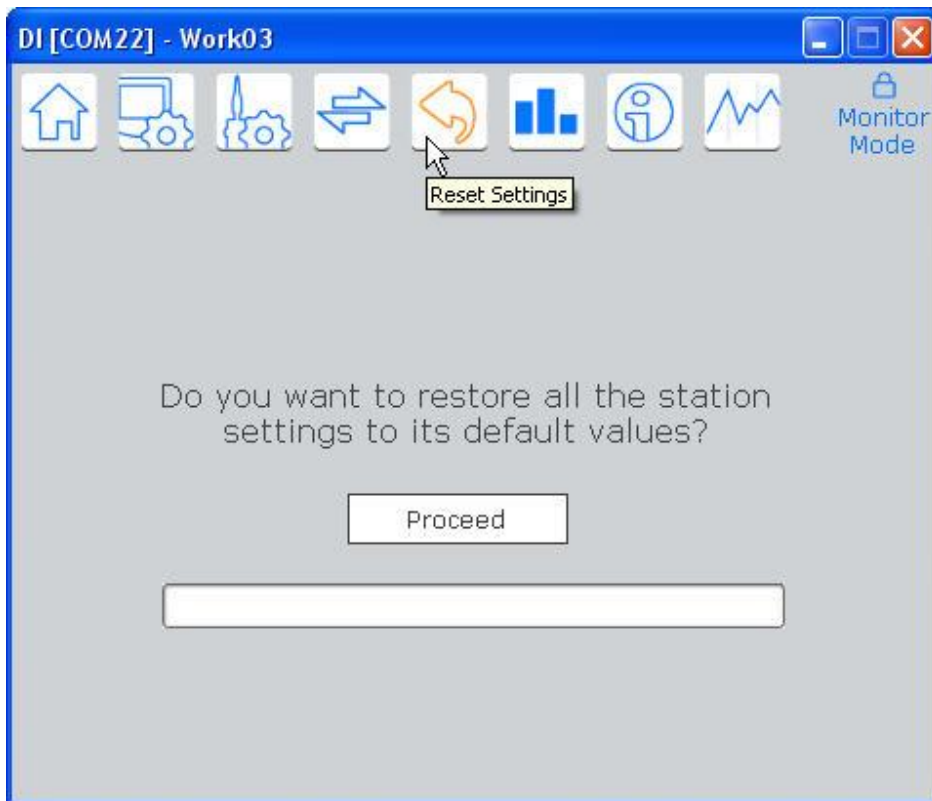
Also, you can load a configuration file into the station, setting all compatible station and tools values.

Although, we recommend that you use the Settings Manager tool, where you can select which settings will be loaded into the station. See "Settings Manager" in page 25.



Reset Station Settings Panel

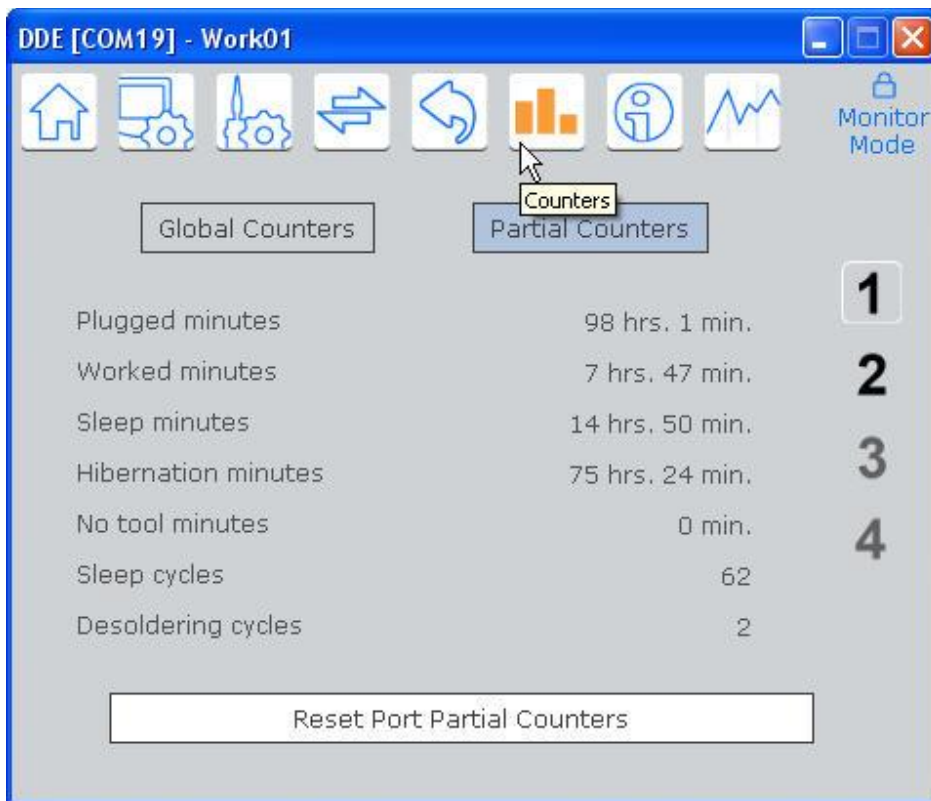
This panel allows you to reset the station settings to the factory values.



Counters Panel

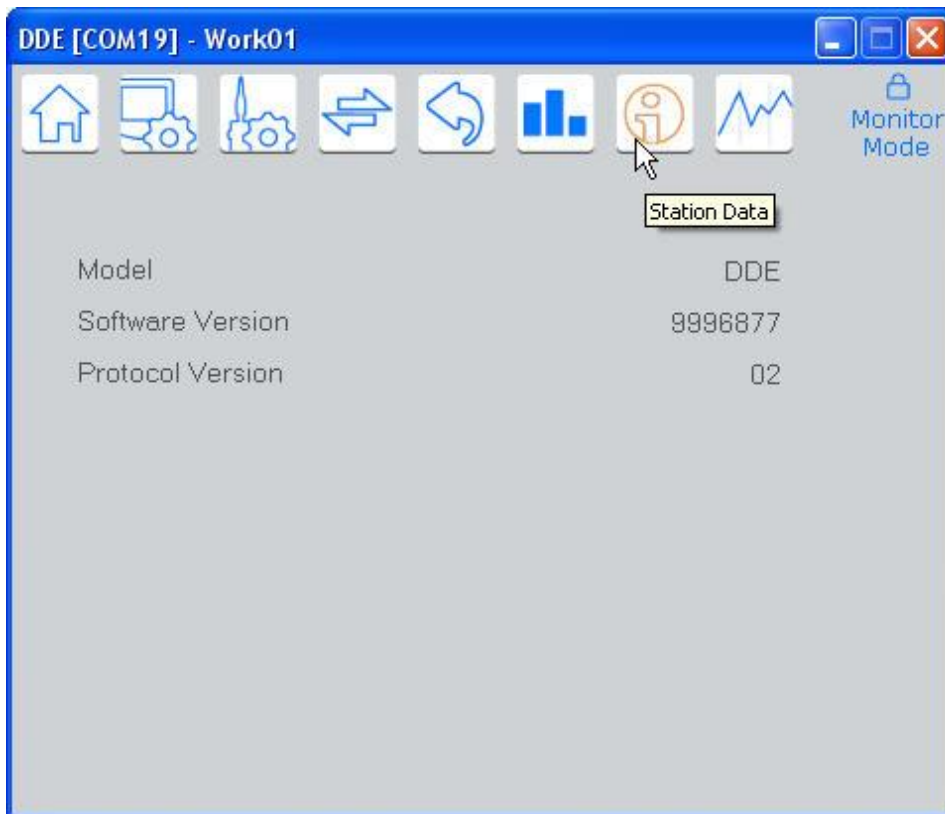
This panel shows you the counters associated to each port.

You cannot change these values. If the station supports partial counters, you can rest them to zero.



Station Data Panel

This panel shows you station data that you cannot change.



Modifying Station Settings

Some values are values that should be written, like the station name or the temperature values.

Others are "switching" values that change simply by clicking on it, like On/Off values, selected temperature level or delays.

Editing settings

When you click over a setting, an edit textbox appears to enter the new value. Press Enter to end the setting edition.

If you are editing the value and press the Escape key, the value will change to the original value.



Editing switching settings

For "switching" values, you will see a hand with a plus sign into it. If you click on the setting, the value will change to the following allowed value.

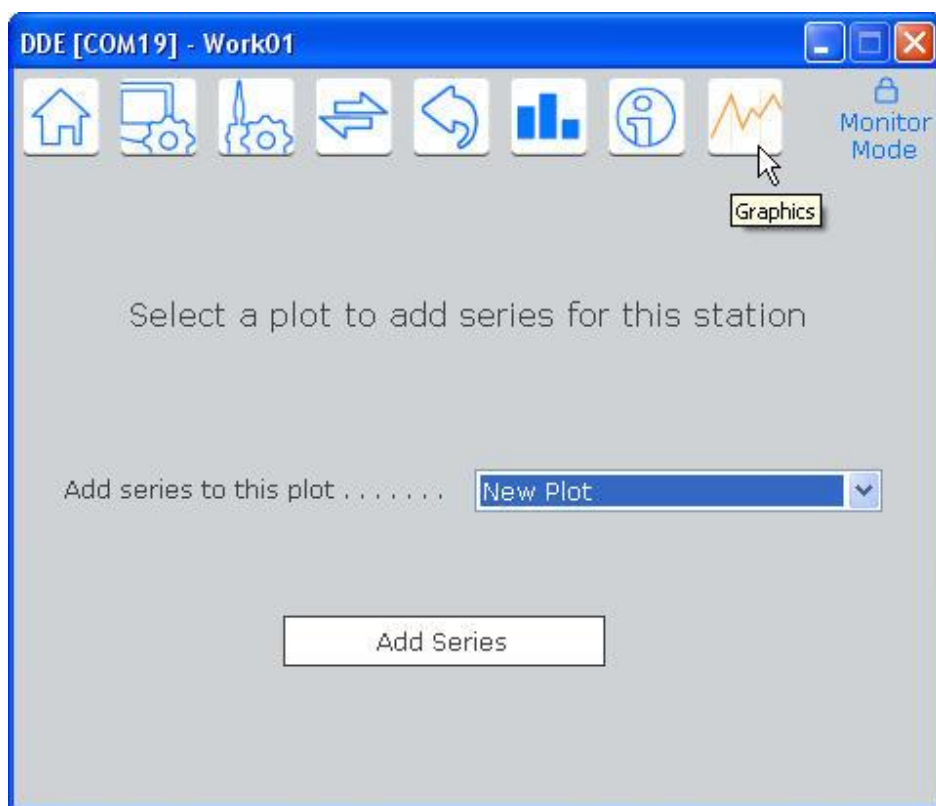


Pressing and maintaining pressed the Control key, the sign will change to a minus sign to indicate that the value will be set to the previous allowed.



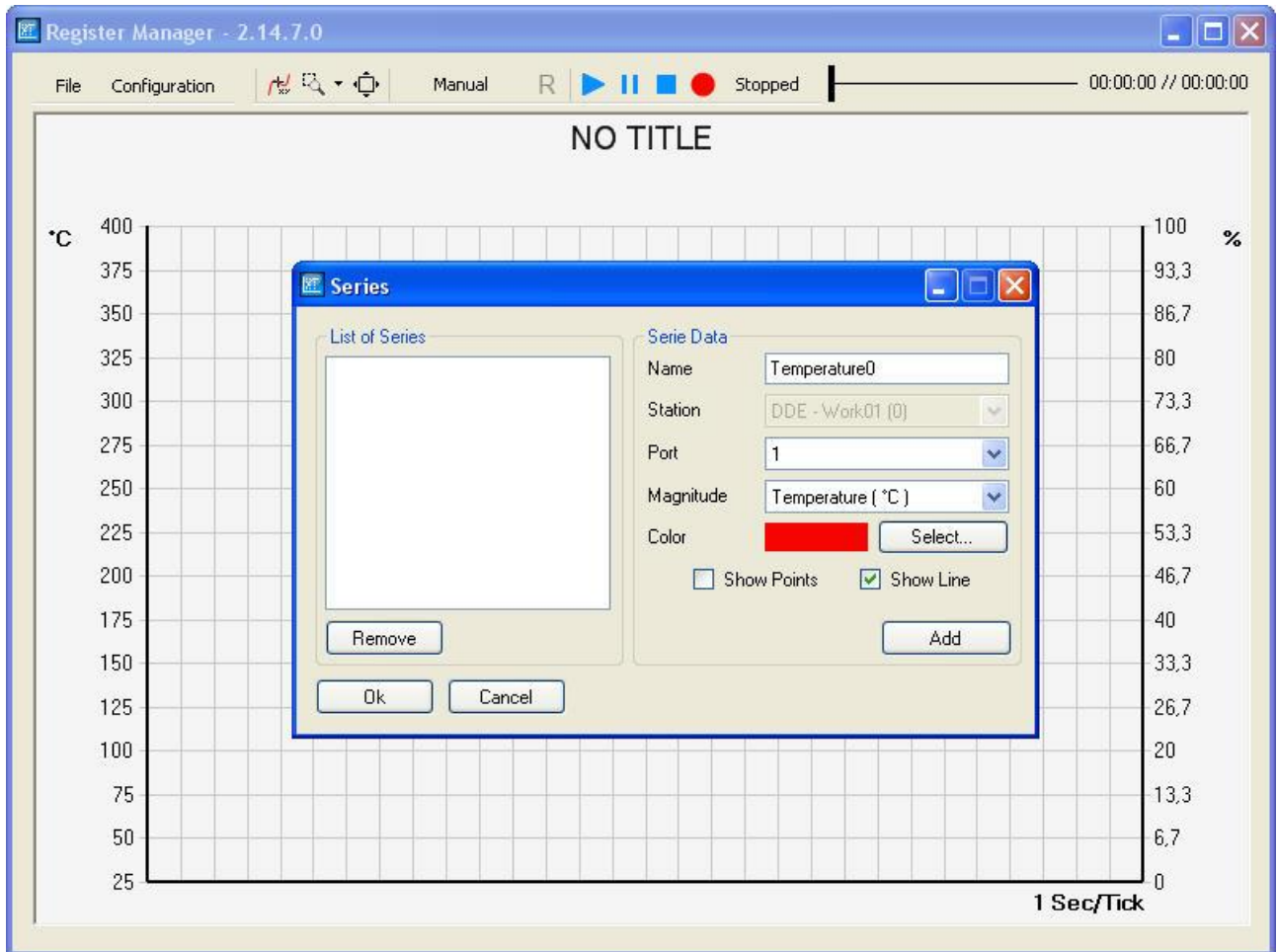
Station Graphics Panel

This panel allows you to add series of this station data to be plotted in the Register Manager



Select a plot window where you want to add series of this station, and press Add Series button.

A Series window appears to add series of the selected station.



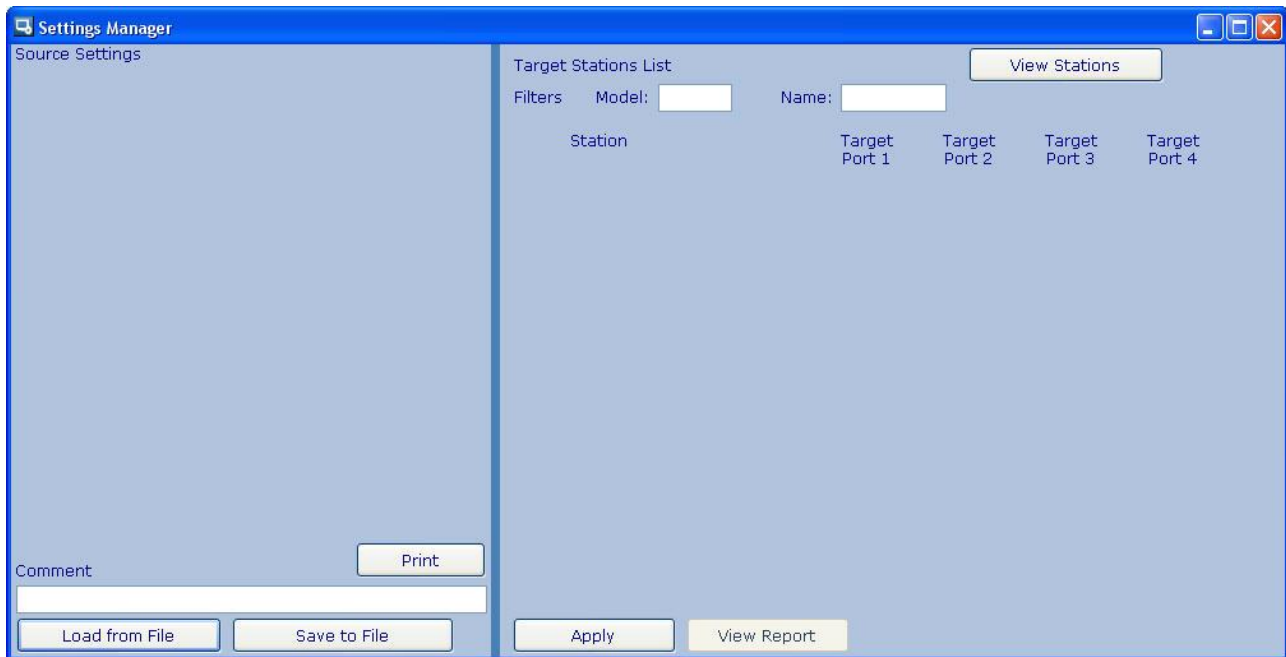
You can also add station series by:

- Selecting the "Add Plot Serie" menu option of the Station List (to a new plotting window).
- Dragging a station from the Station List (to an open plotting window).

See "Register Manager - Plotting" on page 32 to learn how to plot station data into a graphic.

Settings Manager

Selecting *Tools -> Settings Manager* or *File -> Load a Configuration File* menu options, the following window appears.



This window allows you to load source settings on the left panel to be applied to stations listed on the right panel.

Source settings appear as a tree and you can modify them previous to be applied to target stations.

Source Settings Panel

Source Settings

- ☒ Model: DDR
 - ☐ Station Settings
 - ☐ Name: Work001
 - ☐ Temperature Units: Celsius
 - ☐ Minimum Temperature: 200 °C
 - ☐ Maximum Temperature: 400 °C
 - ☐ N2 Mode: Off
 - ☐ Help Text: Off
 - ☐ Beep: Off
 - ☐ Software Version: 9996779
 - ☐ Protocol Version: 01
 - ☒ Ports and Tools
 - ☒ Port: 1
 - ☐ Selected Temperature: 380 °C
 - ☒ Tool: T210
 - ☐ Fix Temperature: --- °C
 - ☒ Selected Temperature Level: No Levels
 - ☒ Temperature Level 1: 200 °C
 - ☒ Temperature Level 2: 250 °C
 - ☒ Temperature Level 3: 280 °C
 - ☐ Sleep Temperature: 180 °C
 - ☐ Sleep Delay: 0 min
 - ☐ Hibernation Delay: 30 min
 - ☐ Adjust Temperature: 0 °C
 - ☐ Tool: T245
 - ☐ Tool: PA
 - ☐ Tool: HT
 - ☐ Tool: DS
 - ☐ Tool: DR
 - ☐ Port: 2

Comment

Print

Load from File Save to File

Loading Settings

You can load settings from a previously saved Configuration File, using the "Load from File" button, or by dragging a station from the Station List to load current settings of a connected station.

Save Settings to Configuration File

You can save the source settings tree and a Comment to a Configuration File by using the "Save to File" button.

Printing Settings

You can print the source settings, also.

Selecting Settings to apply to target stations

You must select the check boxes of the settings that will be applied to the stations listed on the right panel.

By selecting a tree node, all the children nodes and it parents nodes will be selected.

By deselecting a tree node, all the children nodes will be deselected.

Modifying Settings

Some values are values that should be written, like the temperature values; others, are "switching" values, which change simply by clicking on it, like On/Off values, selected temperature level or delays.

Editing Settings

When you click over a setting, an edit textbox appears to enter the new value. Press Enter to end the setting edition.

If you are editing the value and press the Escape key, the value will change to the original value.



Editing Switching Settings

For "switching" values, you will see a hand with a plus sign into it. If you click on the setting, the value will change to the following allowed value.



Pressing and maintaining pressed the Control key, the sign will change to a minus sign to indicate that the value will be set to the previous allowed.

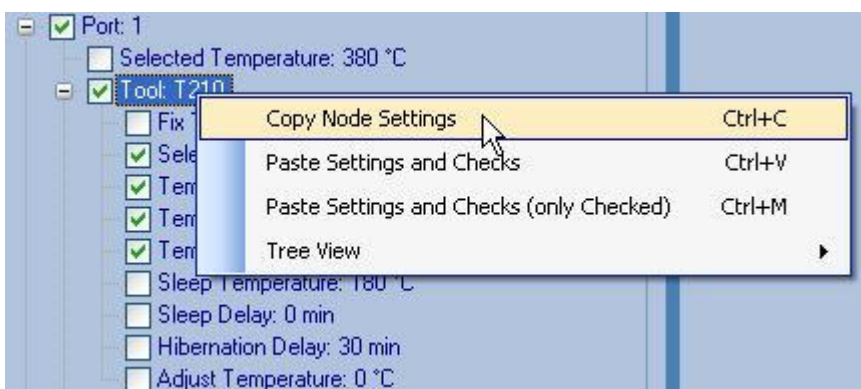


Copying/Pasting Settings

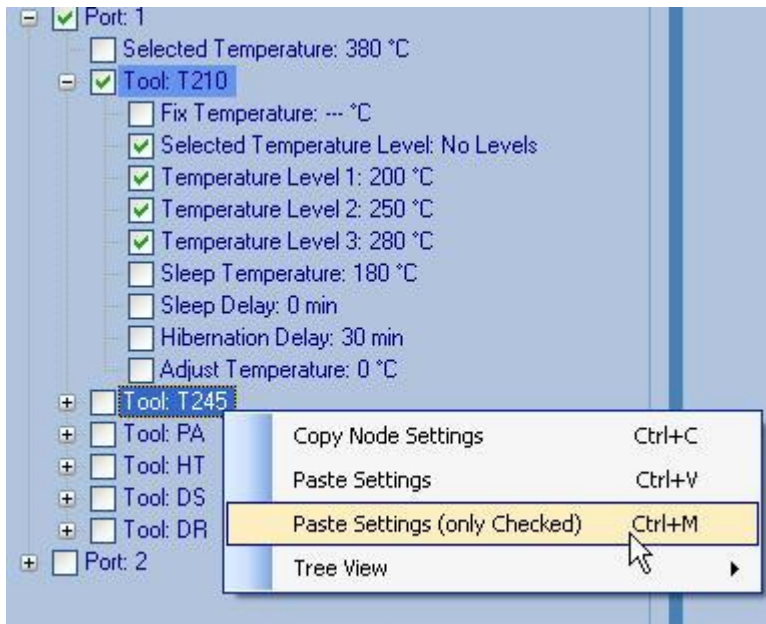
To simplify defining source settings, you can copy/paste some node data.

First, define a node to be copied by selecting "Copy Node Settings" from the popup menu.

You can use Ctrl+C keys.



The node will be marked as source node by changing its background color.



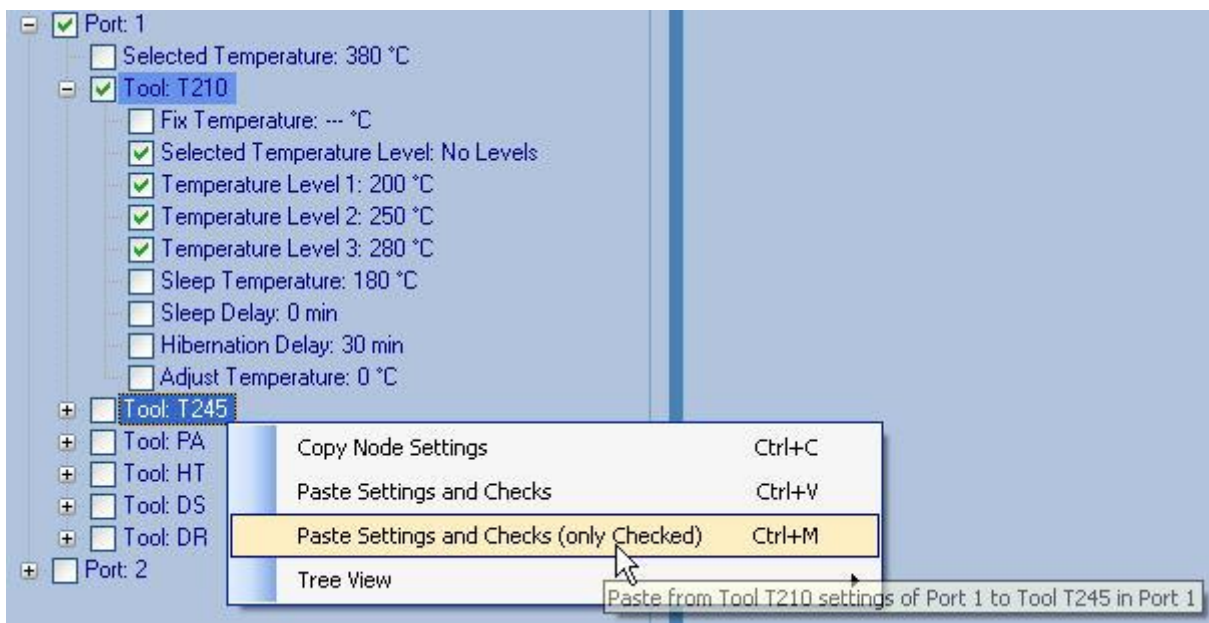
Select other node and choose "Paste Settings" or "Paste Settings (only Checked)", if they are available.

Selecting "Paste Settings" (Ctrl+V), all node settings will be copied to the target node.

Selecting "Paste Settings (only Checked)" (Ctrl+M), only checked settings will be copied to the target node.

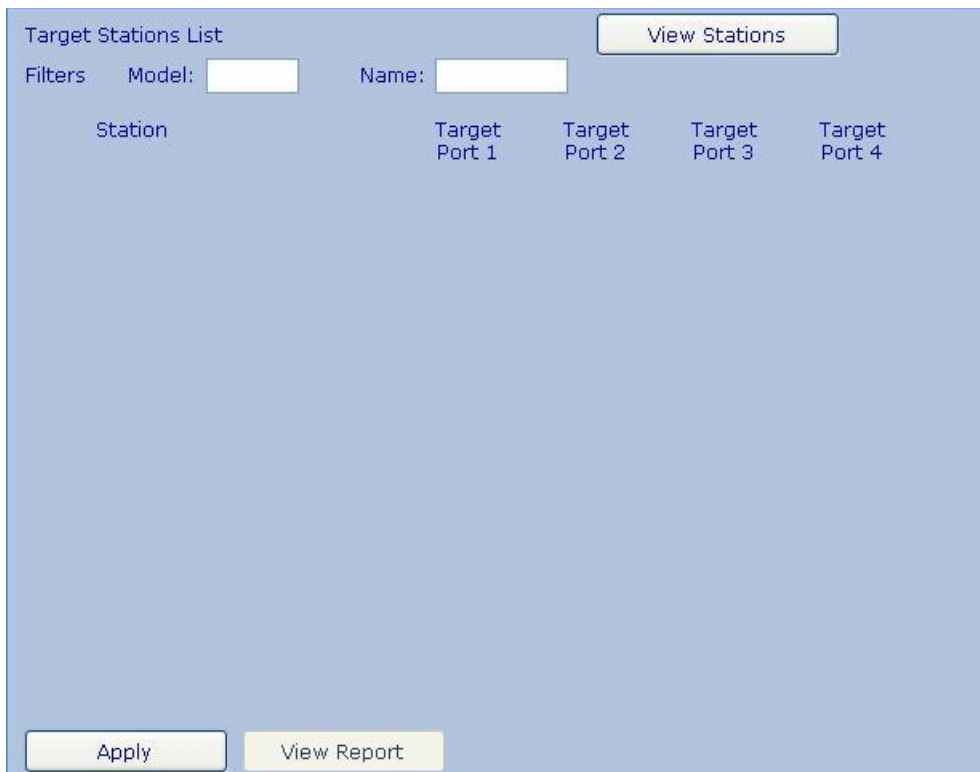
You can change from "Paste Settings" to "Paste Settings and Checks" by clicking the Control key.

"Paste Settings and Checks" option copies both the setting value and the check mark.



Target Stations Panel

Once you have defined the source settings to be copied to target stations, you must select them in the "Target Station List" panel on the right.



The screenshot shows the "Target Stations List" panel. At the top left, it says "Target Stations List". To its right is a "View Stations" button. Below this, there are filter fields: "Filters" followed by "Model:" and a text input box, and "Name:" and another text input box. Below the filters is a table with five columns: "Station", "Target Port 1", "Target Port 2", "Target Port 3", and "Target Port 4". The table body is empty. At the bottom left, there is an "Apply" button. At the bottom right, there is a "View Report" button.

Listing and Filtering Target Stations

Click "View Stations" button to list the target stations.

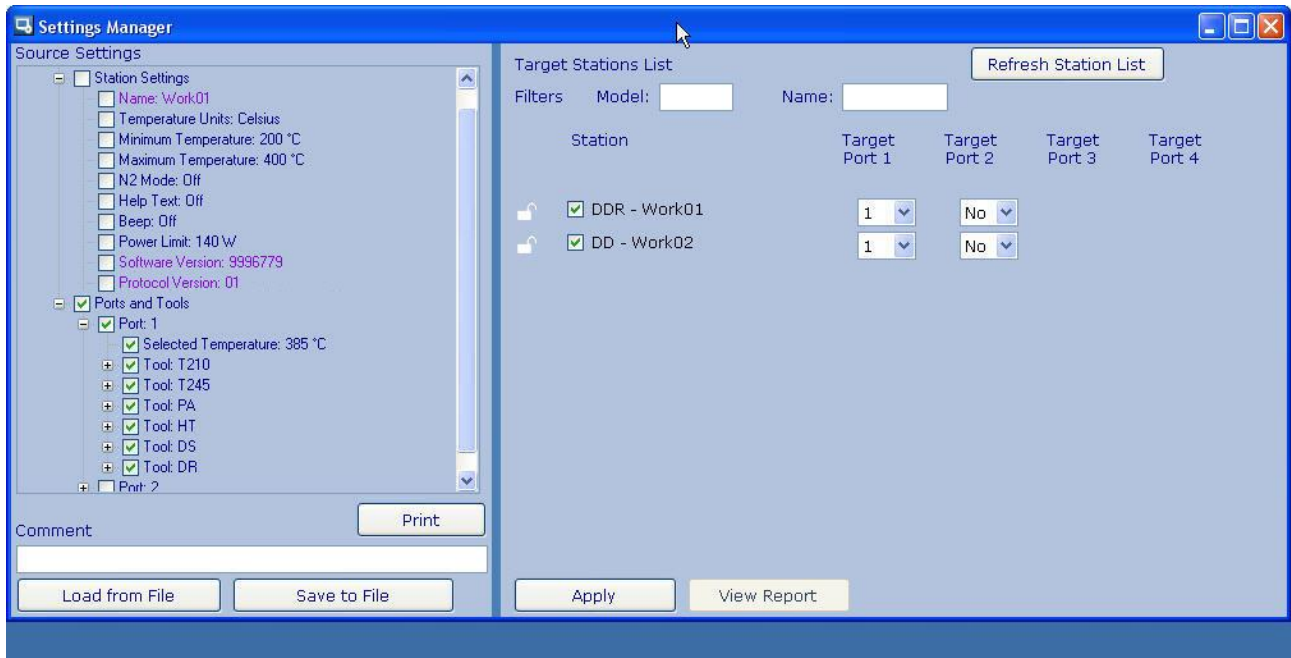
You can filter the list by model or name. It is allowed use asterisks; for example, "Work*" will show stations like "Work01", "Work02", "WorkAAA", etc.

Refresh the station list after entering a filter.

Selecting Stations and Ports

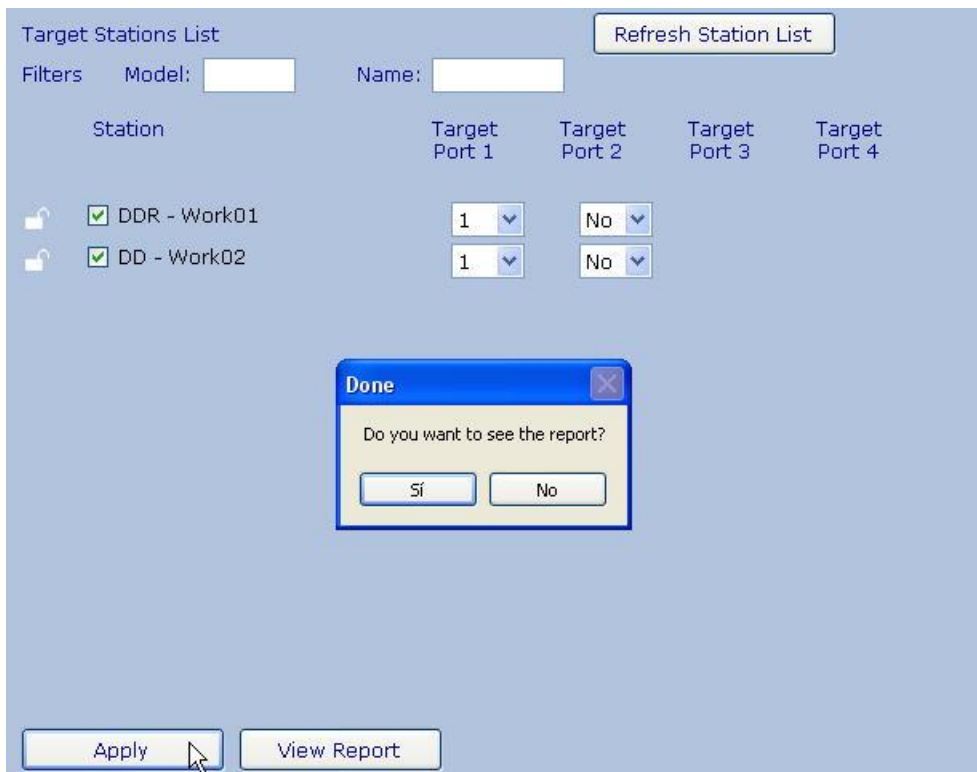
After listing the target stations, you should assign which source port settings will be configured in target ports.

In the following example, settings from port 1 will be applied to port 1 of stations Work01 and Work02.



Applying Source Settings to Target Stations

After target stations and ports selection, click on "Apply" button to copy source settings to target stations.



Viewing a Report

After applying, you can view a report about what was applied.

The report contains the selected source settings, the target stations and ports and any warning about problems when trying to apply settings.

Configuration Report

[2013-04-02 15:36:11 UTC+4:2]

Source Parameters (°C)

Parameter	Value	Parameter	Value
Name		Temperature Units	
Minimum Temperature		Maximum Temperature	
N2 Mode		Help Text	
Beep		Power Limit	
Software Version		Protocol Version	

Port	Tool	Selected Temperature	Fix Temperature	Selected Temperature Level	Temperature Level 1	Temperature Level 2	Temperature Level 3	Sleep Temperature	Sleep Delay	Hibernation Delay	Adjust Temperature
1		385 °C									
	T210		---	First	200 °C	---	---	180 °C	0 min	30 min	0 °C
	T245		---	No Levels	300 °C	---	---	180 °C	0 min	30 min	0 °C
	PA		---	No Levels	---	---	---	180 °C	0 min	30 min	0 °C
	HT		---	No Levels	---	---	---	180 °C	0 min	30 min	0 °C
	DS		---	No Levels	---	---	---	260 °C	0 min	30 min	0 °C
	DR		---	No Levels	---	---	---	260 °C	0 min	30 min	0 °C
2											
	T210										
	T245										
	PA										
	HT										
	DS										
	DR										

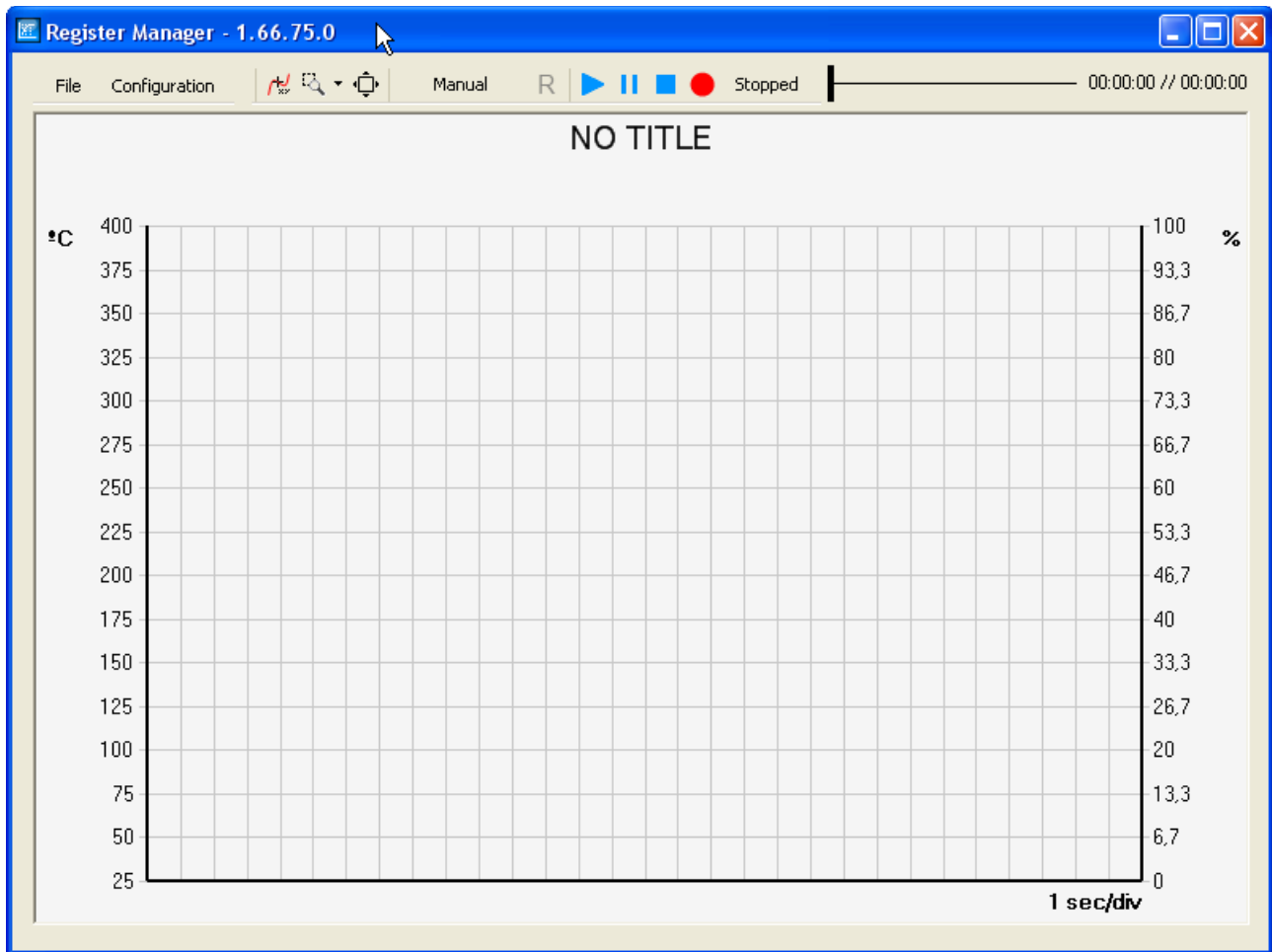
Target Stations and Parameters

Station: Work01 - DDR

Station: Work02 - DD

Register Manager - Plotting

Selecting *Tools -> Register Manager*, the following window appears.



Control Bar



File

- **New:** Deletes the data currently recorded as well as the series created.
- **Open:** It allows you to open a LBR file previously recorded with this program to redisplay a graph.
- **Save As:** Saves the current graph in LBR format to view it afterwards.
- **Print:** Print the graph displayed in the program.
- **Export to CSV:** Export data series to a CSV (Comma separated value) to be processed by other programs. Temperature units written to the CSV file will be in the current temperature unit of the plot.

Configuration

- **Wizard:** Sets the basic parameters to do a graph.
- **Series:** Allows to add, edit and delete plot series. You can also add station series by:
 - Selecting the "Add Plot Serie" menu option of the Station List (to a new plotting window).
 - Dragging a station from the Station List (to an open plotting window).
 - Using the Wizard.
 - Selecting "Add Series" from Graphics tab of a station window (to a new or open plotting window).

- **Axis and Grid:** It allows you to adjust the axes of temperature, power and time as well as the horizontal and vertical grids. This adjusts the ranges for the axes and the steps of the grids.

You can also change the temperature units for the plot: Celsius (°C) or Fahrenheit (°F).

- **Options:** You can set various options as well as the trigger.
- **Title:** This option changes the title of the graph that is being displayed.
- **Templates:** In this option you can load and save templates of graphs.

Coordinates



This button displays the values of the series. Pressing the button will display a popup window that will show the values of the series in the selected time.

Zoom



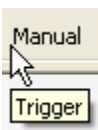
This button allows zooming a single axis either horizontally or vertically, or both axis simultaneously. After selecting an option, drag the mouse over the chart area to zoom in.

Default Zoom



This button restores the plot zoom to the default value.

Trigger Type



It indicates the trigger type that is currently selected (Manual, Auto or Single). If trigger type is not Manual, "R" button resets the detection of the trigger.

Record and Play Controls

- **Play:** It plays the current graph. During playback, times listed to the right indicate the total recorded time and the current playback time.
- **Pause:** It pauses playback or recording.
- **Stop:** It stops current playback or recording.
- **Record:** It starts recording the data. Total recording time is showed at the right of the time bar.

Also there is a time bar to indicate the state of playback of the graph. The bar displays two notches to indicate the time window visible of the total time. So that the notch on the left corresponds to the left side of the graph area.

If you click on the time bar, the plot area will show the selected time range.

Plotting with the Wizard option

Be sure that the station(s) you want to register are connected and appear in the station list.

Add the desired series you want to plot.

For each series to be added, select the station, the port of the station you want to plot, the magnitude (temperature or power) that you want to graph and the desired series name, and press the Add button.

Once you added all series you want to plot, enter the title for the plot and press Next button.

Wizard

Step 1 of 2. Please, connect the stations from where data is desired. Then add the desired series to be shown in the plot by setting the parameters and click on the 'Add' button. Finally, type the desired title for your plot.

Series and Title

Temp HDR 1
Power HDR 1

Remove

Station HDR - Work02 (1)

Port 1

Magnitude Power (%)

Name Power1

Add

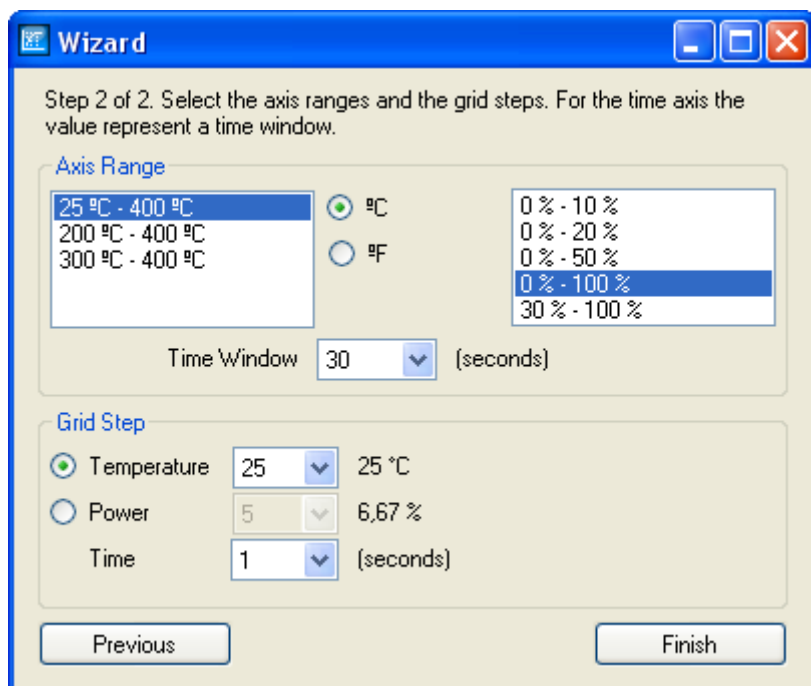
Plot Title

TEST HDR

Next

The axis and the grid configuration will be requested.

From this window, you can select the desired temperature units for the plot (°C or °F).



Press Finish button to end the plot settings.

Start recording by pressing the Record button.

If you want to modify, add or delete a serie, or change the axles, you should go to Configuration / Series or Configuration / Axis and Grid.

The recording can be paused and then up again. During the break, you will not get new values for the series.

When you stop recording you can play and move about it by clicking on the time bar.

Trigger

The trigger specifies how the program starts recording.

The trigger options and modes can be defined in Configuration / Options.

- **Manual:** Recording begins when you press the Recording button and does not stop until you press the Stop button.
- **Single:** Recording starts when you remove the tool from the stand and stops when it reaches the right edge of the graph area or time range is over, depending on your time axis settings.
- **Auto:** Recording starts when you remove the tool from the stand and does not stop until you press the Stop button.

You can use the Reset ("R") button in Single mode to re-enable the detection of the trigger.

Options

Colors

Temperature Axis

Power Axis

Time Axis

Grid Divisions

Series Text

Background

Title Text

Plot Starting Side

☒ From left

☐ From right

Trigger

☐ Auto
It starts when extract the tool out of the stand

☐ Single
It starts when extract the tool out of the stand and finishes when time window is reached

☒ Manual
It starts and finishes by using the buttons in the plot

Station

Port

Lines and Points

Line Width (pix.)

Point Width (pix.)

History

Version 0715

First version

