

Open Manager

Installation Guide

OM31601/0116

Station Controller Service Version: 3.16.01.0

Host Controller Service Version: 3.16.01.0

Connect Library DLL Version: 3.16.01.0

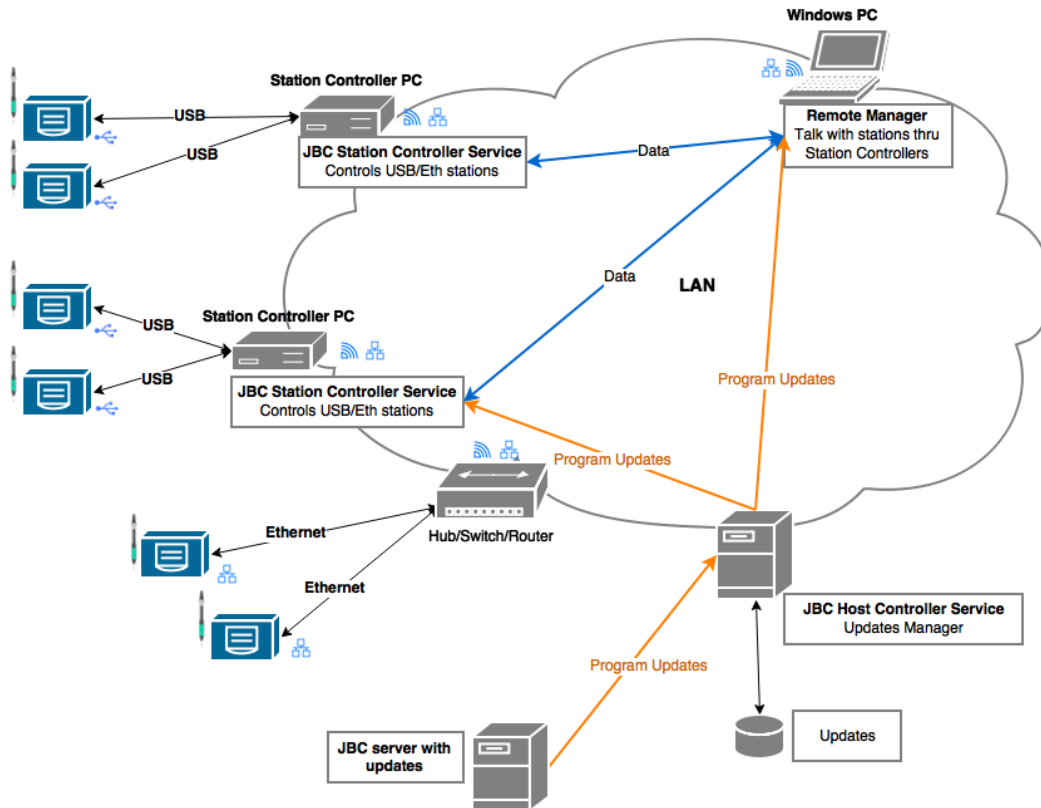
Contents

Introduction	3
Modules	3
JBC Station Controller Service (requires NET Framework 4).....	3
JBC Remote Manager (requires NET Framework 4.5.1)	3
JBC Host Controller Service (requires NET Framework 4)	4
System Requirements	4
Net Framework 4.0 (for JBC Station Controller and Host Controller Services).....	4
NET Framework 4.5.1 (for JBC Remote Manager).....	4
Download and install NET Framework 4	5
Download and install NET Framework 4.5.1	5
Supported Stations.....	5
Installing JBC Open Manager.....	6
Modules to be installed.....	6
Options Chart	7
Installing modules in each PC	8
JBC Station Controller Service Installation	10
JBC Remote Manager Installation	12
JBC Host Controller Service Installation.....	14
USB driver installation for the new Excellence series stations	16
Enable access to JBC Station Controller Service.....	16
Uninstalling Modules	16
Appendix A	17
Examples of layouts.....	17
Local Layout.....	17
Unique PC controlling and managing several stations connected by USB.....	17
Distributed Layout.....	18
Several PCs controlling stations and remote station managers.....	18
Appendix B	19
USB driver installation	19
Installing a new USB driver for the new Excellence series stations.....	19
For Windows XP.....	19
For Windows 7/8	19
If installation failed on Windows 8	19
History	25
Version 0715	25

Introduction

Open Manager is a distributed environment to manage JBC soldering stations.

This solution allows you to access station data remotely, using the company network.



Modules

JBC Station Controller Service (requires NET Framework 4)

It is a Windows service installed in a PC, named as *Station Controller*, to control stations connected to it by USB connections. Also, it can control DME stations connected to the network by Ethernet.

For USB connections, the proper USB to UART bridge driver must be installed in the Station Controller PC. This driver is provided with the JBC Station Controller Service module installation.

This service uses TCP port number 8000 for communications with the *JBC Remote Manager* user interface. Also, it uses UDP port 3702 to allow JBC Remote Manager finding this service.

JBC Remote Manager (requires NET Framework 4.5.1)

It is a Windows program that can be installed in any PC in the network. It contains the user interface and communicates with JBC stations thru the Station Controllers.

JBC Host Controller Service (requires NET Framework 4)

It is a Windows service installed in a PC in the network. This service updates Open Manager software automatically from JBC premises. It requires outbound Internet access.

System Requirements

Processor: Intel i3

RAM: 4GB recommended

Net Framework 4.0 (for JBC Station Controller and Host Controller Services)

Supported Operating System

- Windows XP SP3
- Windows Server 2003 SP2
- Windows Vista SP1 or later
- Windows Server 2008 (not supported on Server Core Role)
- Windows 7
- Windows Server 2008 R2 (not supported on Server Core Role)
- Windows 7 SP1
- Windows Server 2008 R2 SP1
- Newer versions, like Windows 8, already support NET Framework 4.

NET Framework 4.5.1 (for JBC Remote Manager)

Supported Operating System

Windows 7 Service Pack 1

Windows 8

Windows Vista Service Pack 2

Download and install NET Framework 4

[Microsoft .NET Framework 4 \(Web Installer\)](#), requires an Internet connection.

[Microsoft .NET Framework 4 \(Standalone Installer\)](#)

Download and install NET Framework 4.5.1

[Microsoft NET Framework 4.5.1 \(Web Installer\)](#), requires an Internet connection.

[Microsoft NET Framework 4.5.1 \(Standalone Installer\)](#)

Supported Stations

The JBC stations supported by the Open Manager environment are listed below. The minimum station program version needed is showed for each station model.

Station	Minimum program version needed
DM	9996761
DD	9996762
DDR	9996779
DI	9996763
HD	9996764
HDR	9996780
CD/CF	9996765
CS/CV	9996766
CP	9996767
NA	9996768
DDE, HDE, DME, NAE	All

Installing JBC Open Manager

Modules to be installed

You must decide which modules to install in each PC.

The PCs with JBC stations connected to it by USB should have installed **JBC Station Controller Service** module, with "Search for stations connected to this PC by USB connector" option.

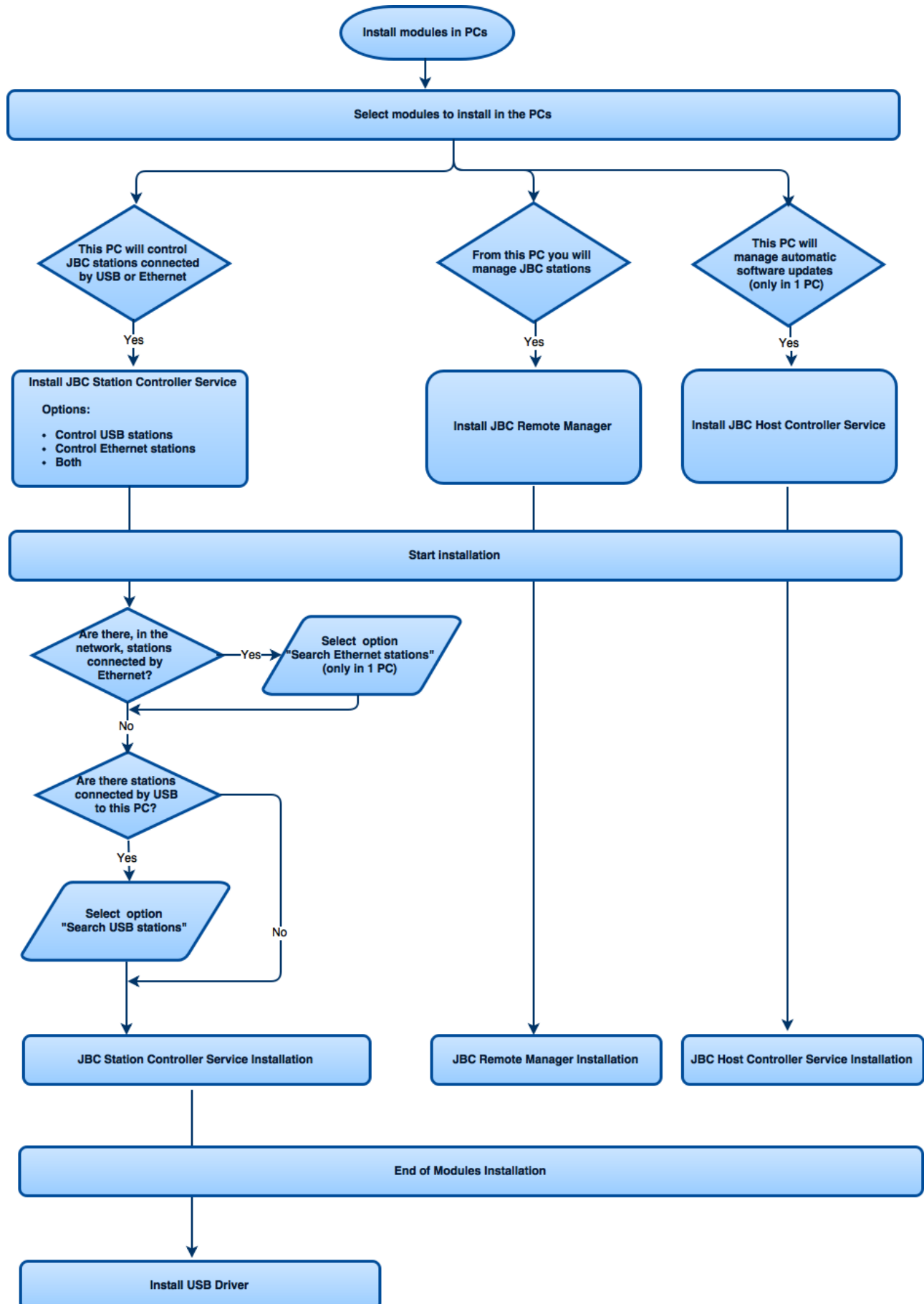
If there are JBC DME stations connected to the network by Ethernet connection, you should install, **only in one PC**, the **JBC Station Controller Service** with "Search for both type of connections" option or "Search for stations connected to the network by Ethernet connector" option.

You should install, **only in one PC**, the **JBC Host Controller Service** module to use automatic updates of the Open Manager software.

You should install the **JBC Remote Manager** module (the user interface) in PCs from where you want to manage the stations (view and configure the station data).

Following, there is a chart to define the options to install.

Options Chart

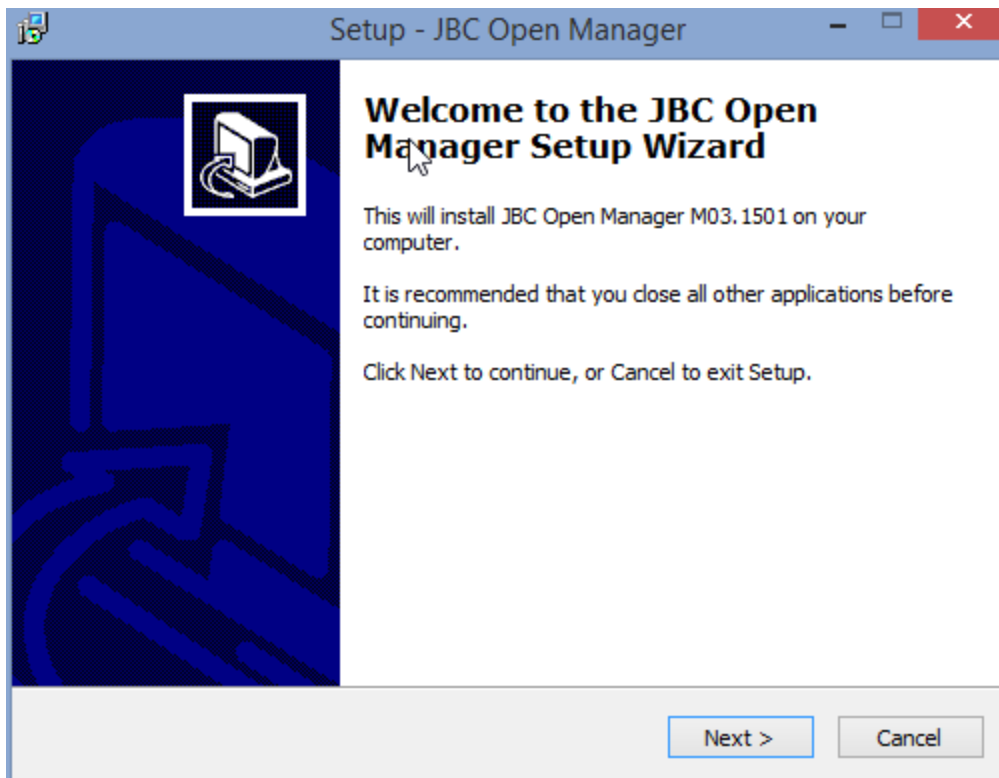


Installing modules in each PC

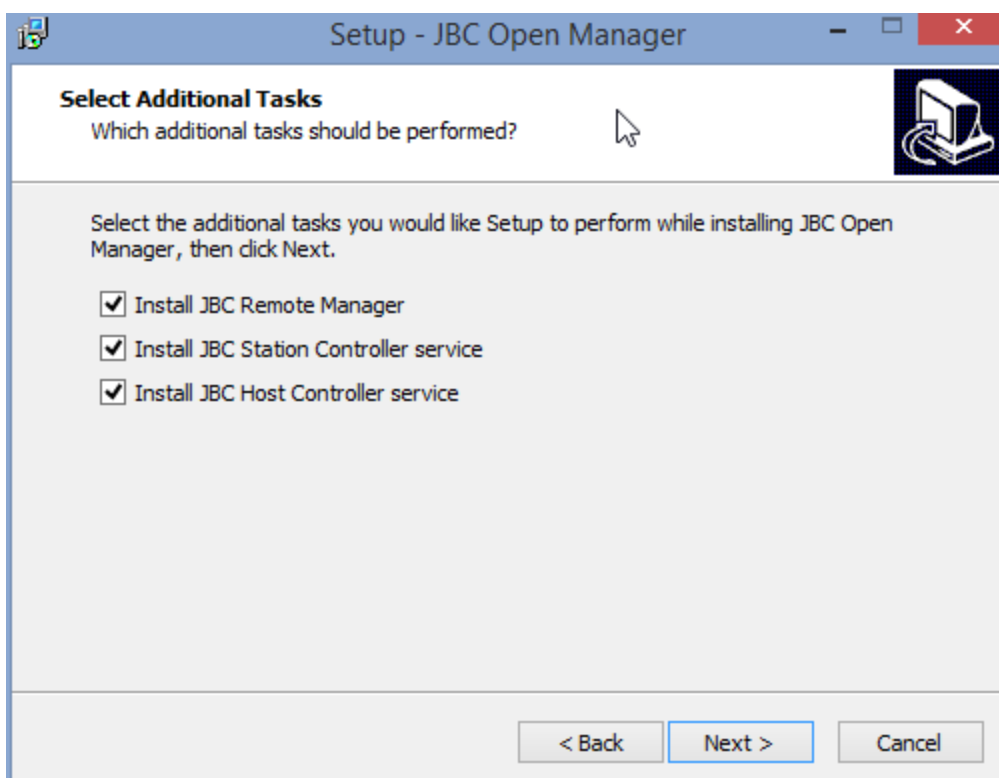
Execute the installer program.

Note: you must run installation process as an administrator user.

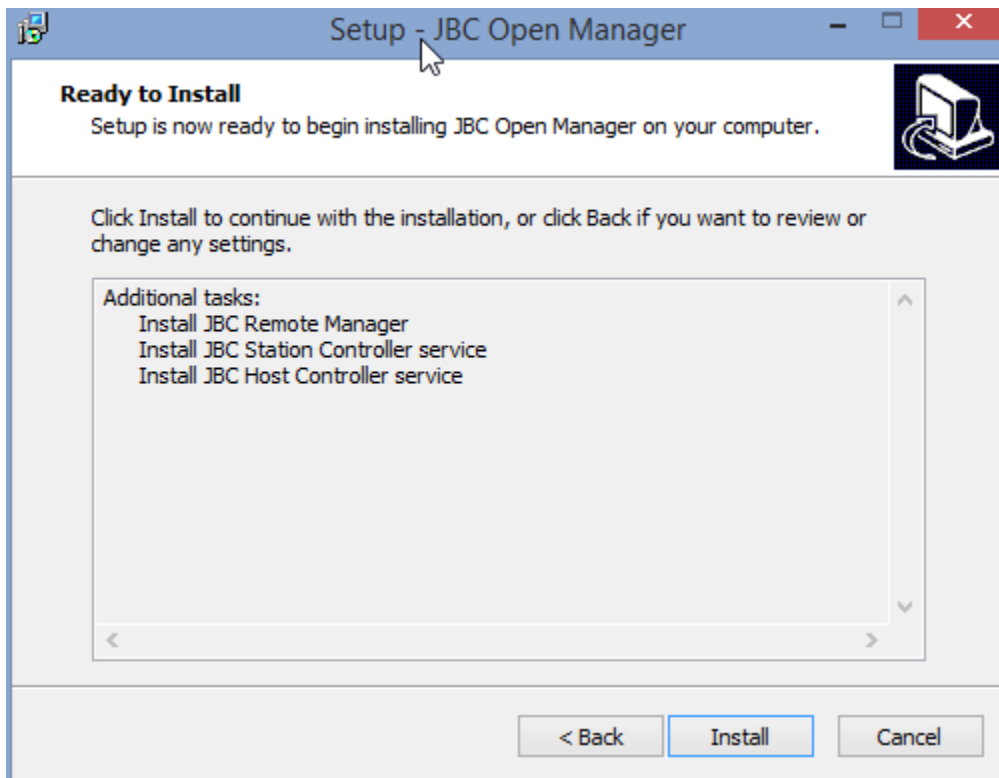
Welcome window.



Select which modules to install



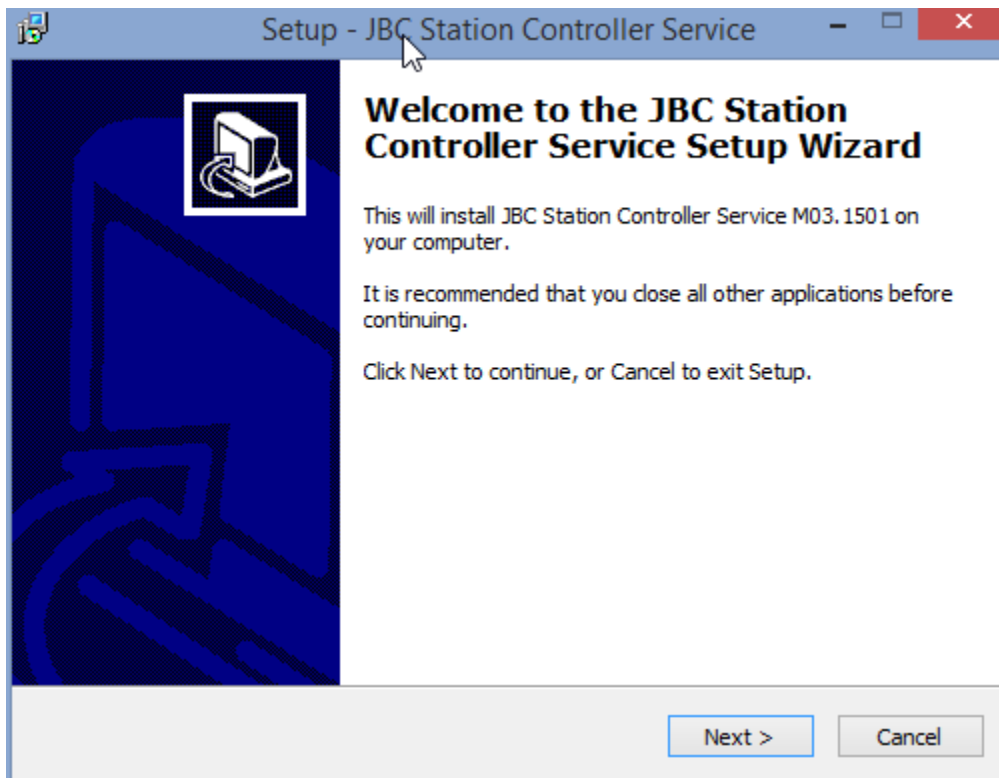
Confirm installation of modules.



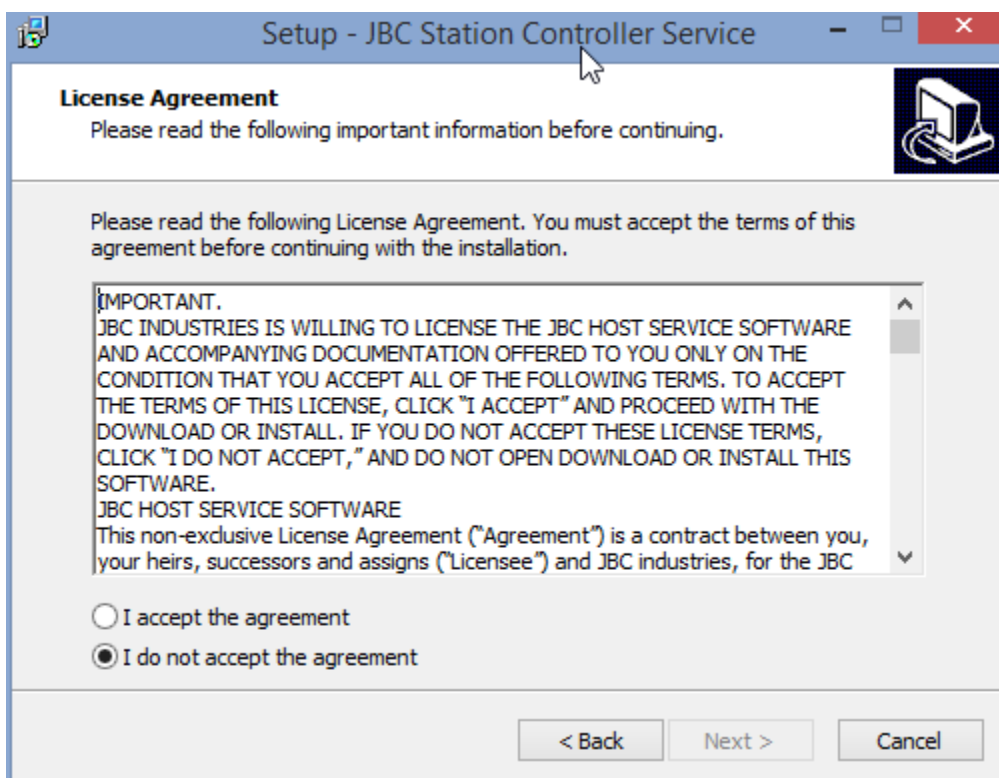
Press Install to start each module installation process.

JBC Station Controller Service Installation

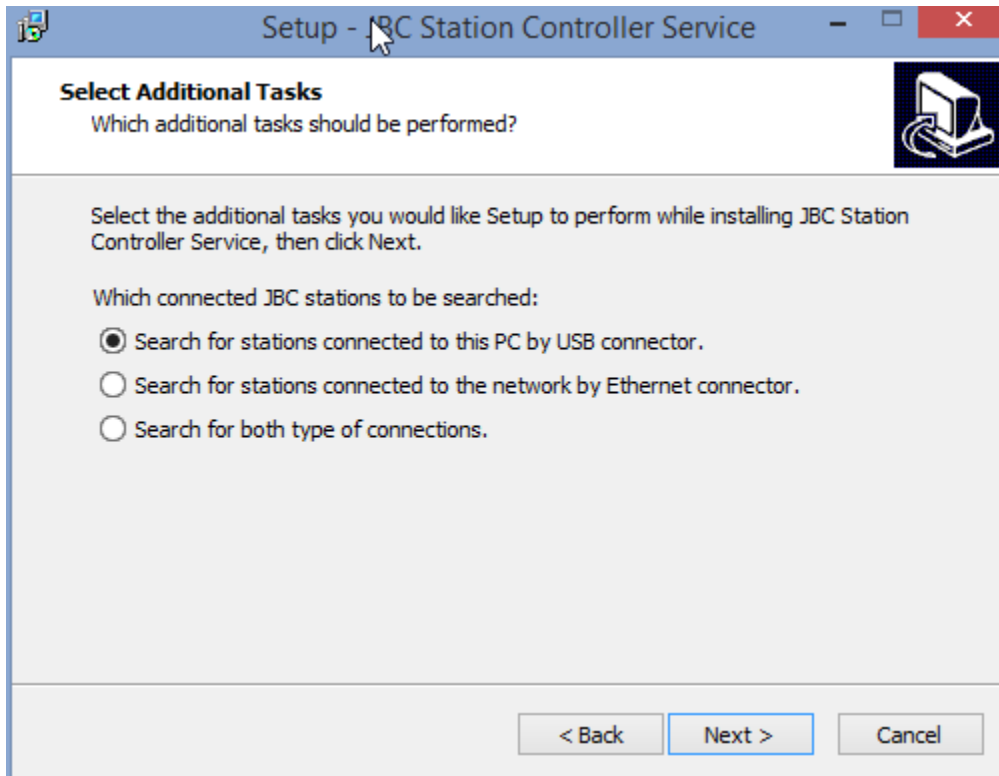
Welcome window.



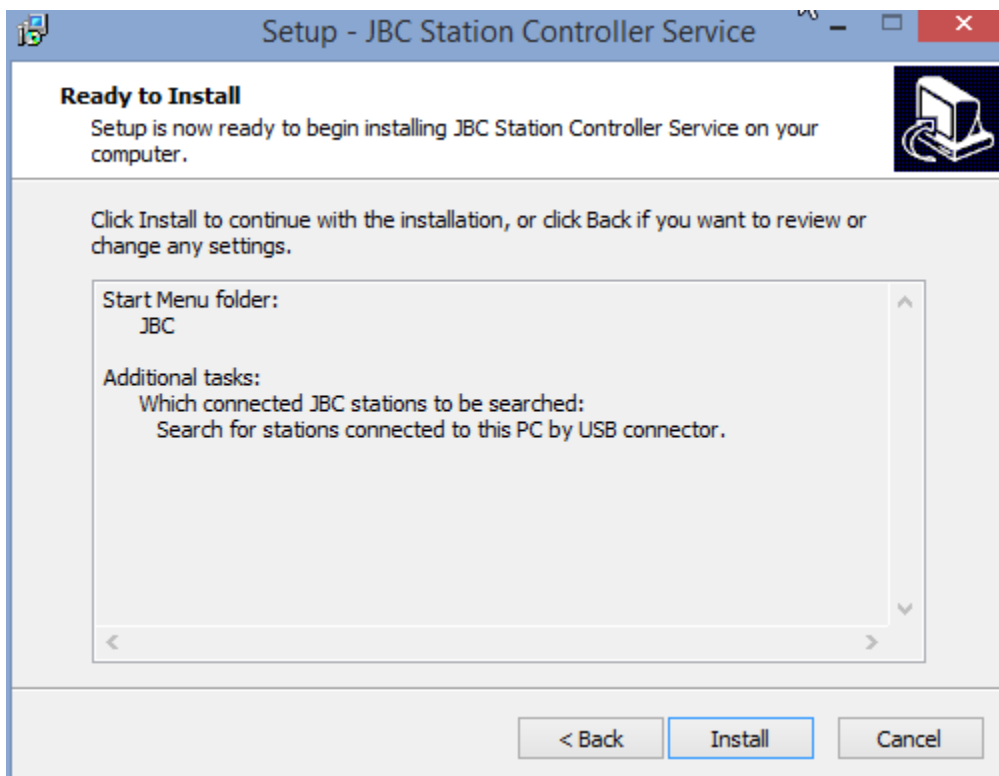
Accept license.



Select which JBC stations this PC will control.

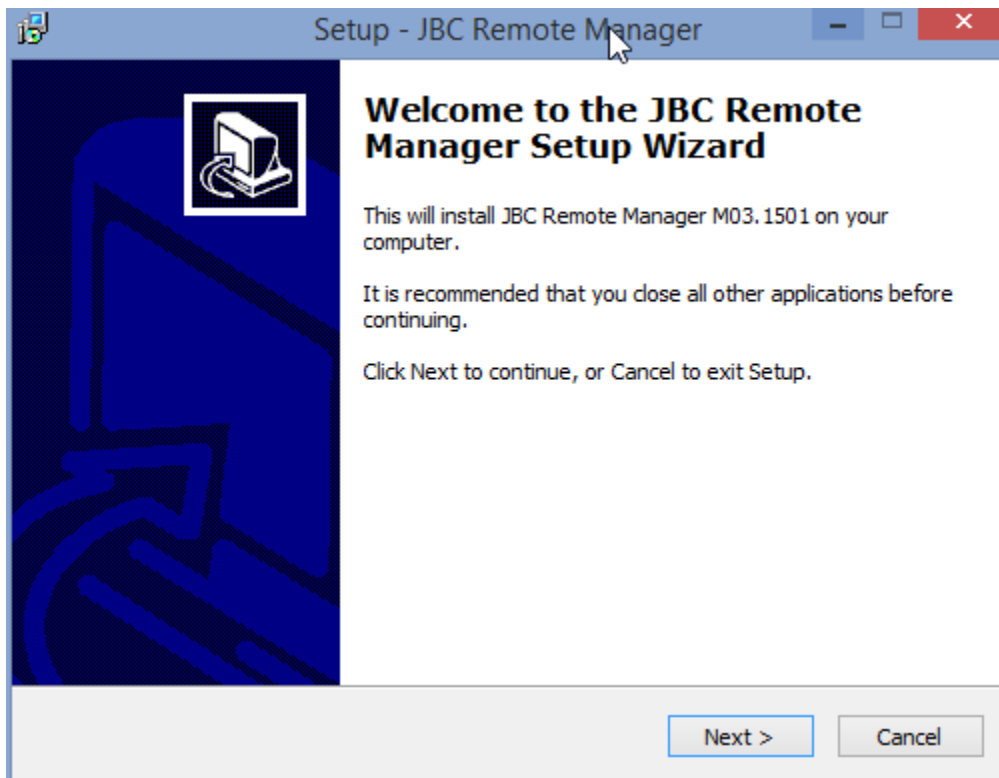


Press Next to start module installation process.

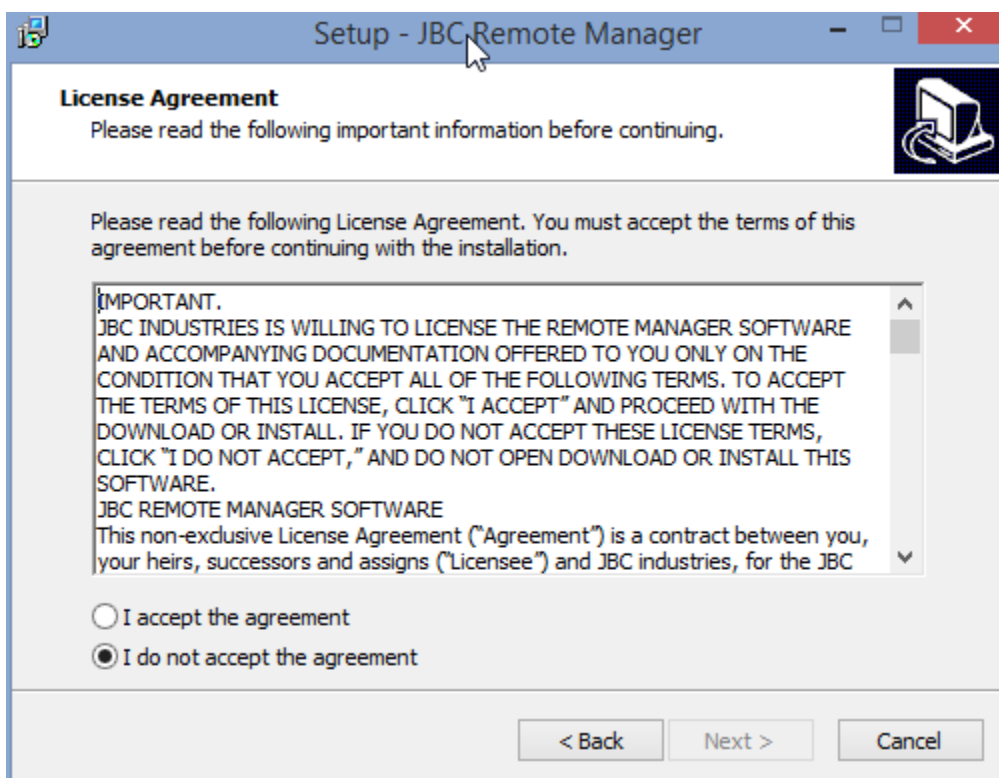


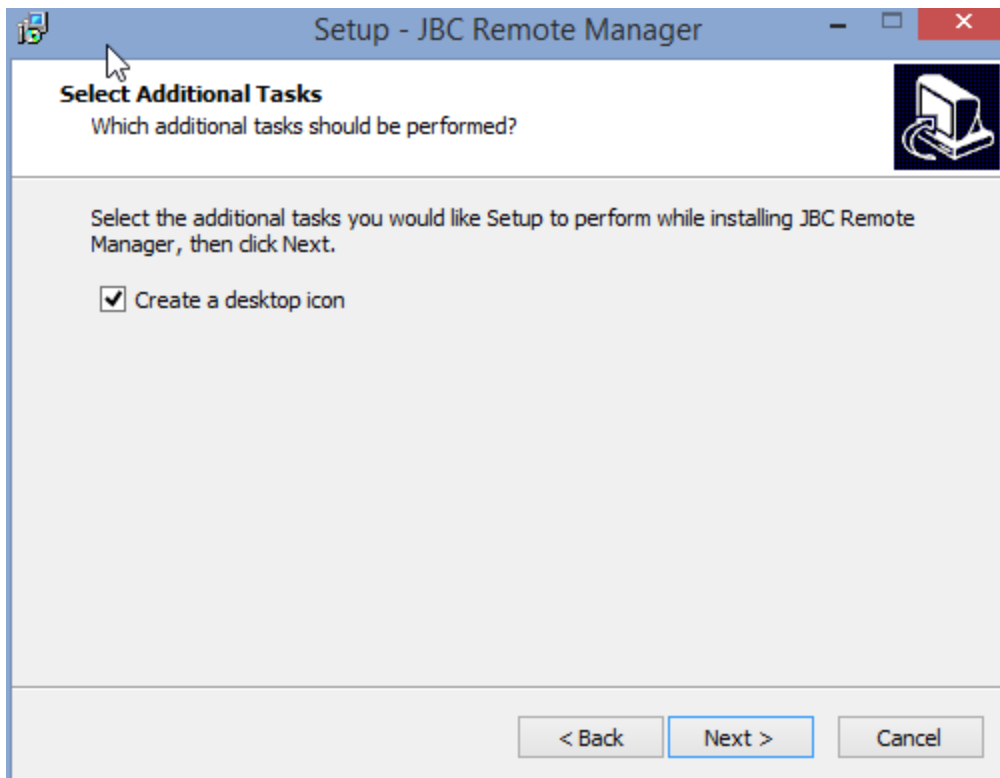
JBC Remote Manager Installation

Welcome window.

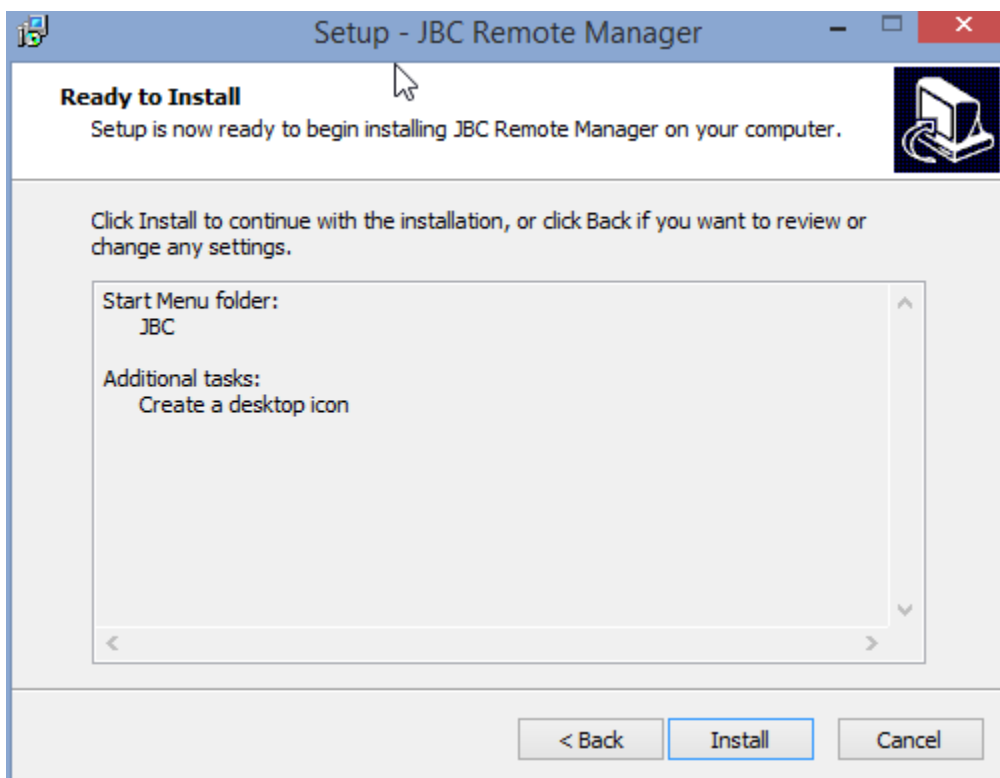


Accept license.



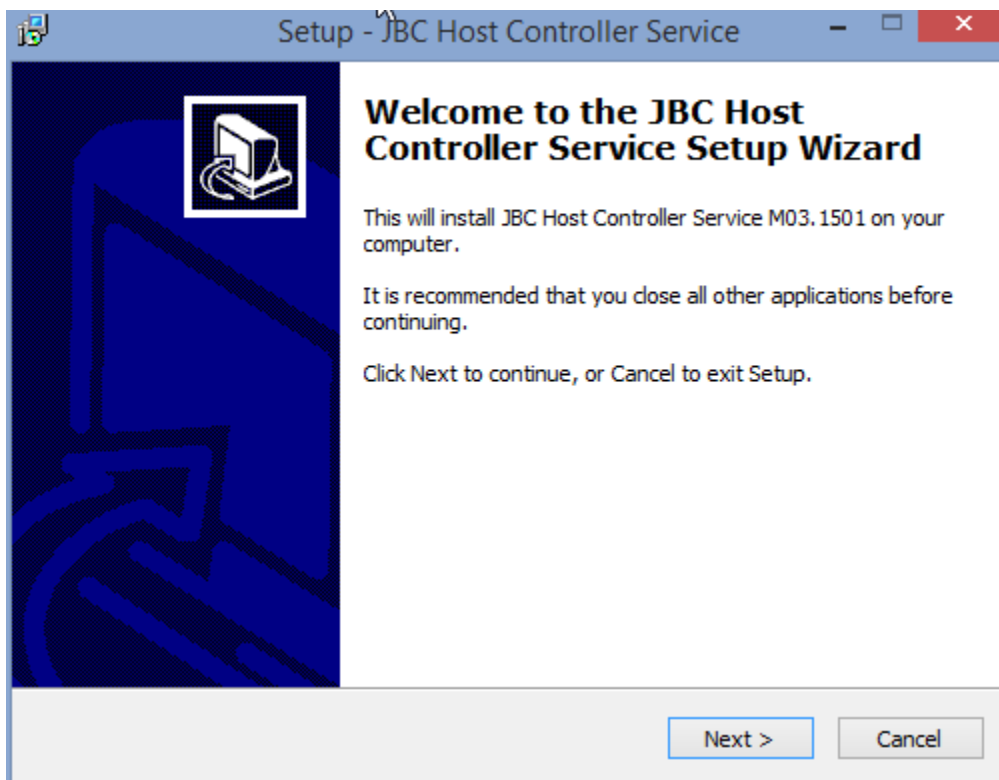


Press Next to start module installation process.



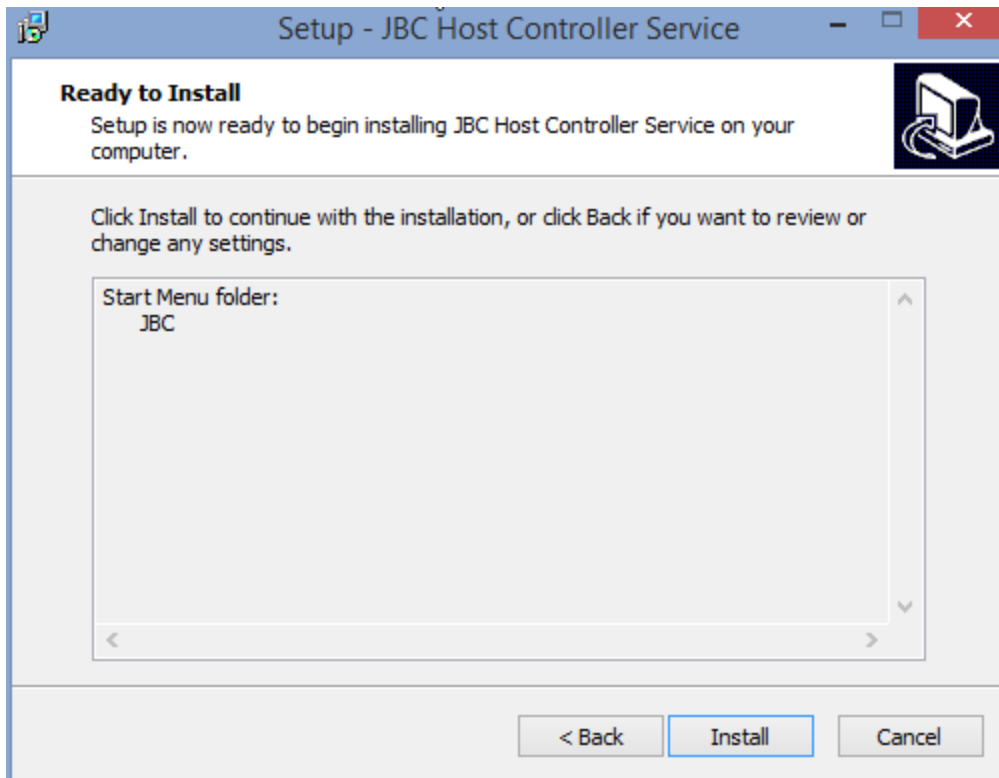
JBC Host Controller Service Installation

Welcome window.

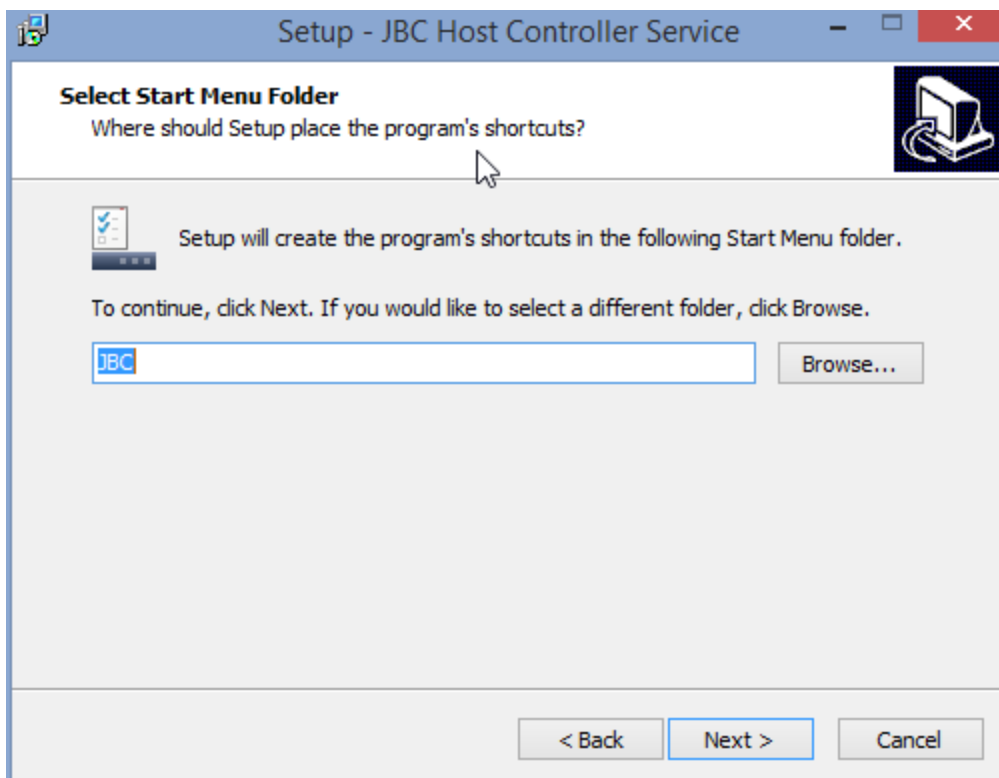


Accept license.





Press Install to start module installation process.



USB driver installation for the new Excellence series stations

After installing **JBC Station Controller Service** in Station Controllers, you must install the new USB driver for the Excellence series stations. See Appendix B in page 19 for details.

Enable access to JBC Station Controller Service

JBC Station Controller Service use port TCP 8000 to communicate with **JBC Remote Manager**. You must enable this port in the Station Controller PCs.

Also, you must enable UDP port 3702 to allow **JBC Remote Manager** finding this service.

Uninstalling Modules

Select **Uninstall** option from the Programs menu to uninstall a module

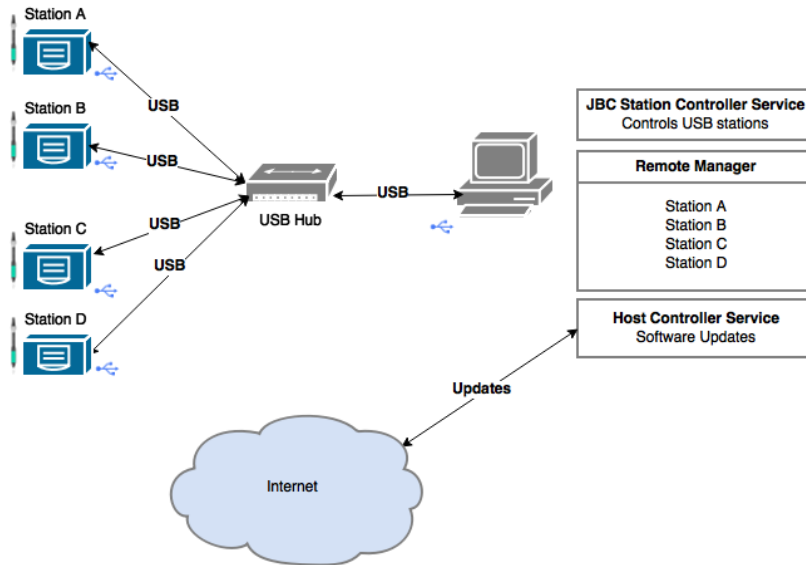


Appendix A

Examples of layouts

Local Layout

Unique PC controlling and managing several stations connected by USB

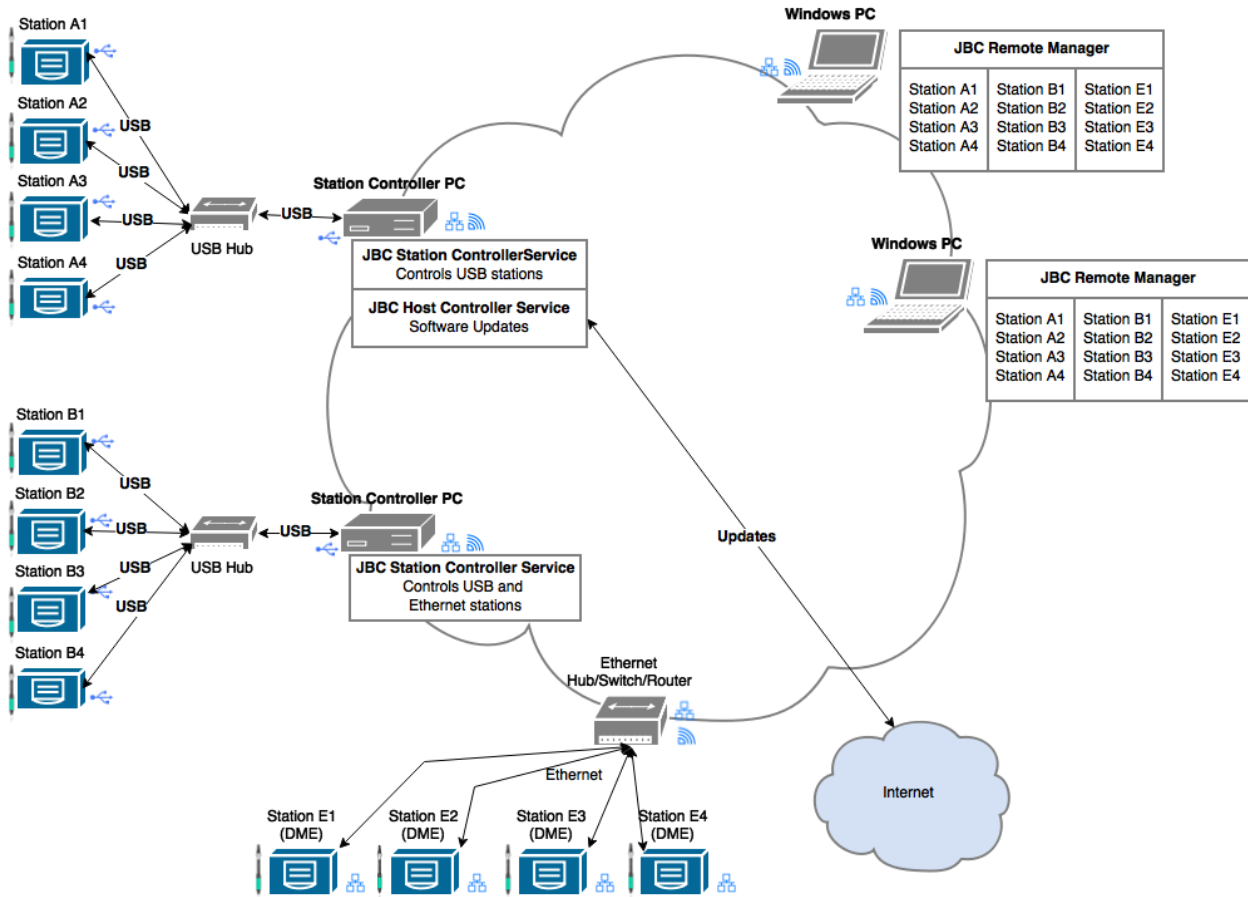


This is a layout where there is only one PC that will manage the stations. No network is used to access the stations and manage them remotely.

In this case you should install all the modules in the same PC.

Distributed Layout

Several PCs controlling stations and remote station managers



This is a distributed layout, using the company network to access station data.

There are several PCs, perhaps in different locations, controlling soldering stations connected by USB (Station Controllers).

Employees that want to manage those stations to change settings, graphic data, etc., will use Remote Manager from other locations.

In this case, you should install **JBC Station Controller Service** modules in the Station Controllers and **JBC Remote Manager** program in employees PCs.

Appendix B

USB driver installation

Installing a new USB driver for the new Excellence series stations

The first time you connect a station from the Excellence series to a PC, you must install the required USB driver. Not installed driver appears as "**MQX VIRTUAL COM**" in Control Panel -> Device Manager window under Ports (COM & LPT) entry. Installed driver appears as "**Virtual Com Port (COMx)**"

For Windows XP

1. When connecting the USB, the new hardware wizard window appears. Answer "**No, not this time**" to the question about connecting to Windows Update, and press Next.
2. Select the second option: **Install from a list or specific location (Advanced)**, and press Next.
3. Select **Don't search. I will choose the driver to install** and press Next.
4. Click the **Have Disk...** button on the "Select the device driver you want to install for this hardware."
5. Click the **Browse...** button on the "Install From Disk" dialog box that appeared
6. In the Locate File dialog box that appears next, navigate to the folder containing the driver (C:\Program Files\JBC\Manager\drivers\Freescale)
7. Click the **INF** file that displays in the file list and click the Open button
8. Click the **OK** button back on the "Install From Disk" dialog box.
9. Choose the newly added hardware back on the "Select the device driver you want to install for this hardware." window and then click the Next > button.
10. If you're warned about the software for the hardware device not passing the Windows Logo testing, click the **Continue** button.
11. At the last window, check if the driver was successfully installed, and press **Finish**.

For Windows 7/8

1. When connecting the USB, a message appears stating that the system cannot install the driver.
2. Go to the **Start** icon and select **Control Panel**
3. Search for and select **Device Manager** (or Hardware and Sound and then Device Manager, if view Small/Large icons is selected)
4. Search for **MQX VIRTUAL COM** device.
5. Right click on it and select **Properties**
6. Click the **Driver tab** and press **Update Driver**
7. On the "How do you want to search for driver software?" window, click on **Browse my computer for driver software**.
8. In the next window labeled "Browse for driver software on your computer", click on **Let me pick from a list of device drivers on my computer**, located at the bottom of the window.
9. In Windows 8/8.1, select **Show all devices** and click Next
10. Click the **Have Disk...** button located under the text box.
11. Click the **Browse...** button on the Install From Disk dialog box that appeared.
In the Locate File dialog box that appears next, navigate to the folder containing the driver (C:\Program Files\JBC\Manager\drivers\Freescale or C:\Program Files\JBC\JBC Station Controller Service\drivers\Freescale)
12. Click the **INF** file that displays in the file list and click the Open button.
13. Click OK to install the driver.
14. Click Next

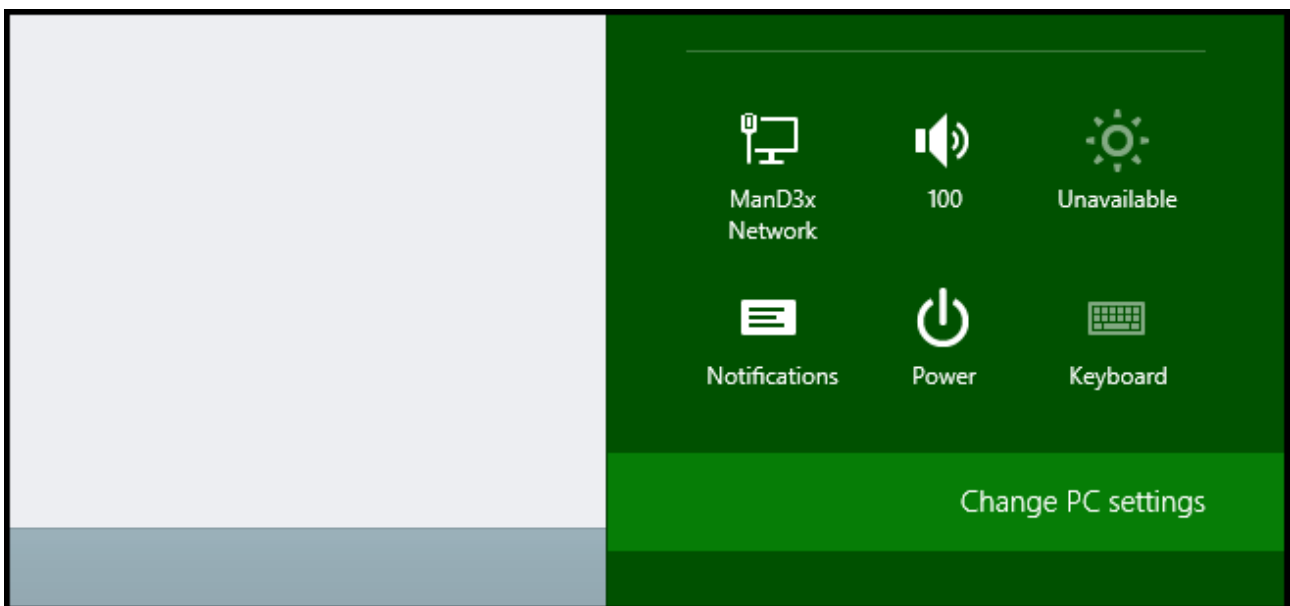
If installation failed on Windows 8

May be Windows 8 blocks the installation of digitally unsigned drivers. To disable driver signature verification on Windows 8, do the following procedure and try it again.

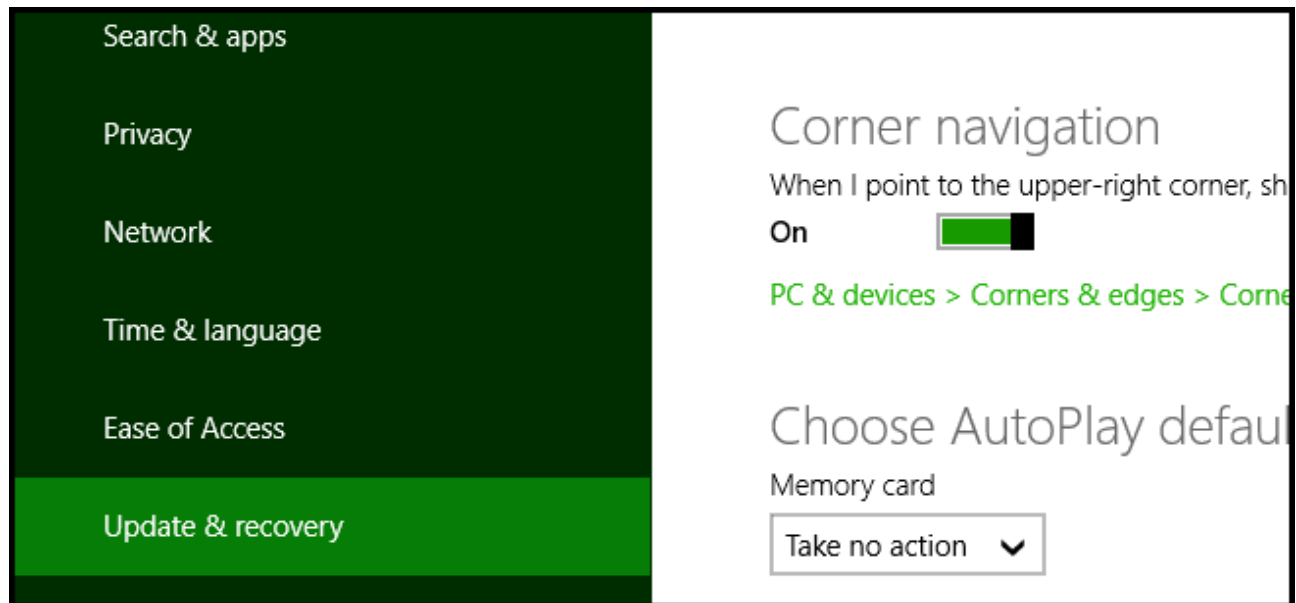
Press the Win + C keyboard combination to bring up the Charms Bar, then click on the Settings Charm.



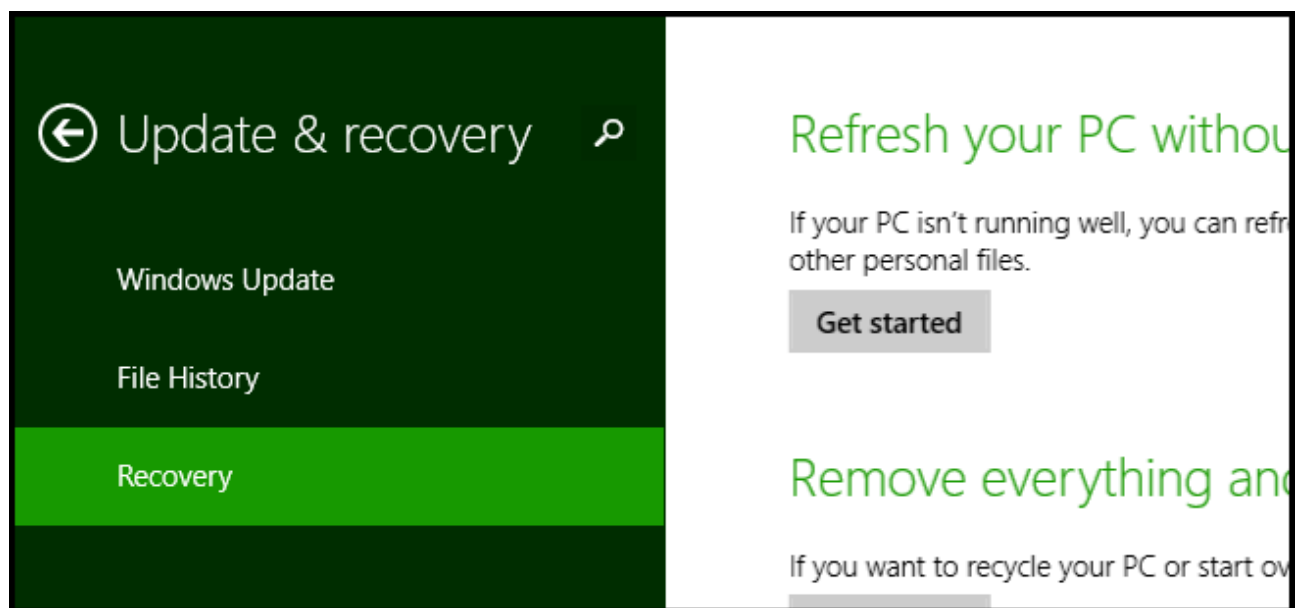
We need to head into the Modern Control Panel, so go ahead and click on the Change PC settings link.



When the Control Panel opens, switch over to the "Update & recovery" section.



Then click on the Recovery option on the left hand side.



Once selected, you will see an advanced startup section appear on the right hand side. You will need to click on the "Restart now" button.

Advanced startup

Start up from a device or disc (such as a USB drive or DVD), change Windows startup settings, or restore Windows from a system image. This will restart your PC.

Restart now

Once your Computer has rebooted you will need to choose the Troubleshoot option.

Choose an option



Continue

Exit and continue to Windows 8

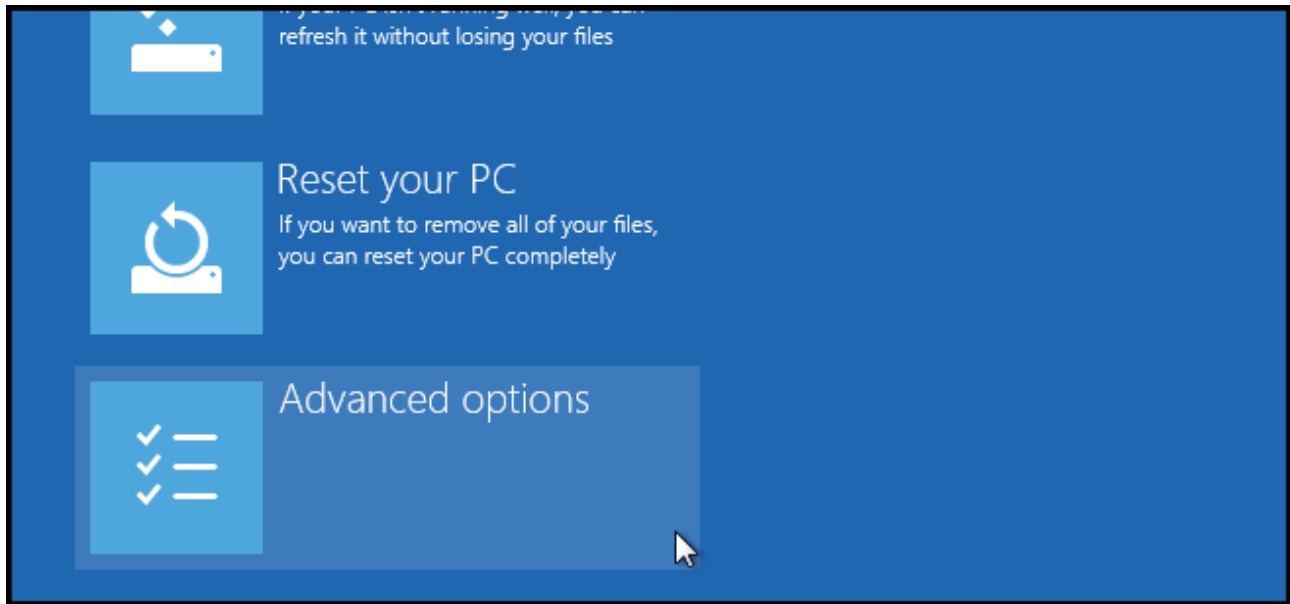


Troubleshoot

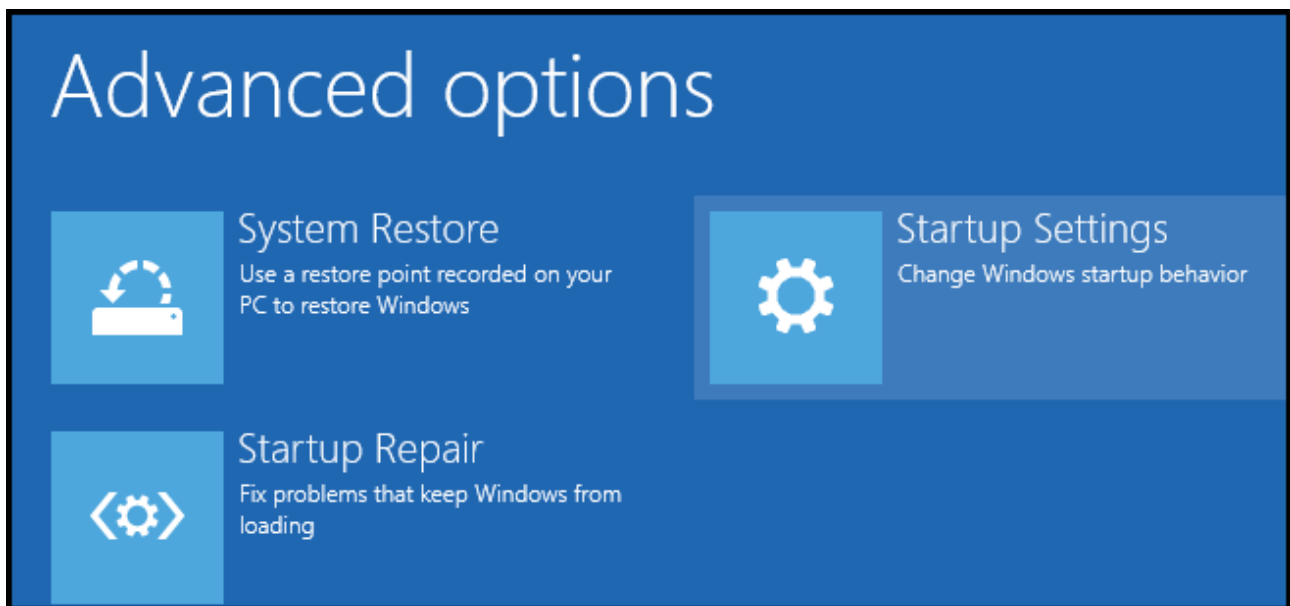
Refresh or reset your PC, or use
advanced tools



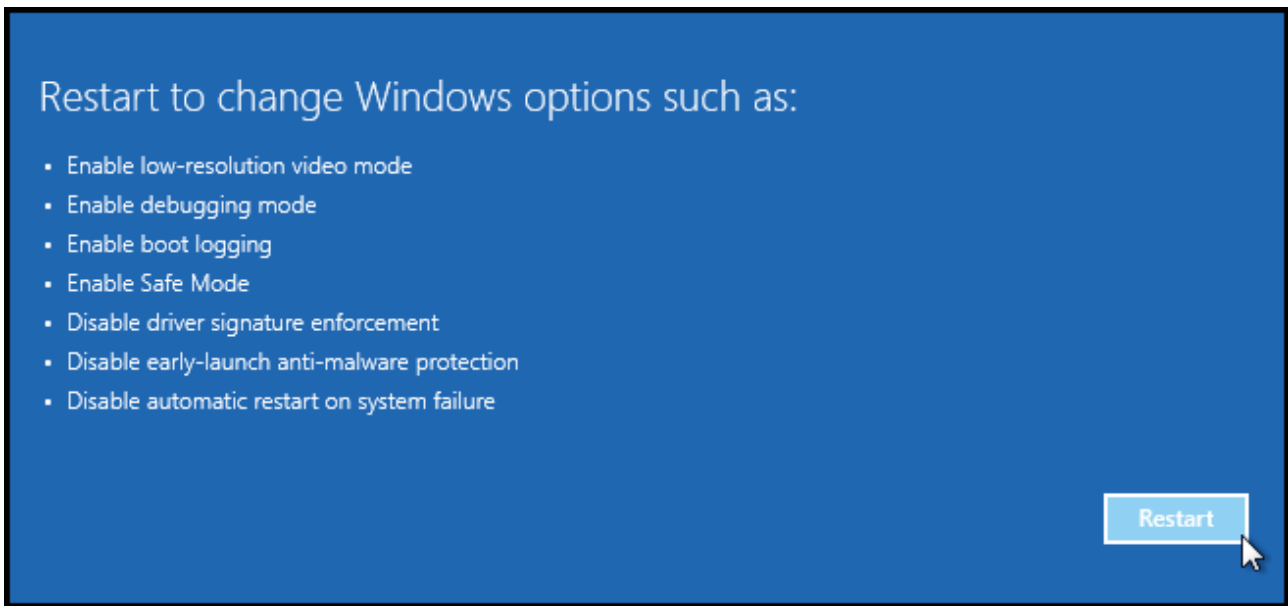
Then head into Advanced options.



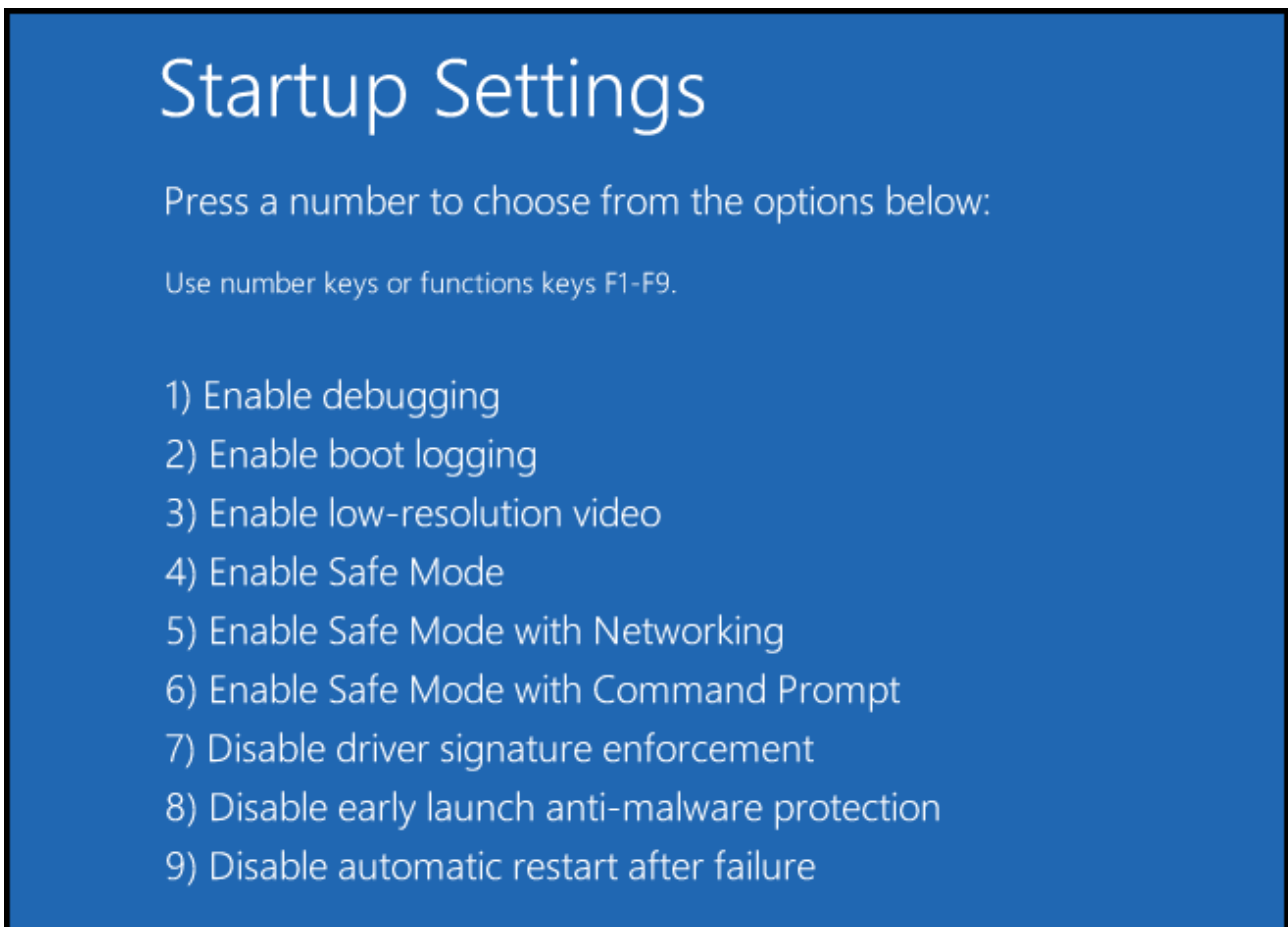
Then Startup Settings.



Since we are modifying boot time configuration settings, you will need to restart your Computer one last time.



Finally, you will be given a list of startup settings that you can change. The one we are looking for is "Disable driver signature enforcement". To choose the setting, you will need to press the F7 key.



That's all. Your PC will then reboot and you will be able to install unsigned drivers

History

Version 0715

First version

