

# **JBC**

[www.jbctools.com](http://www.jbctools.com)

## **INSTRUCTION MANUAL**



## **ADS / HDS / DNS**

Stands for Handles

This manual corresponds to the following references:

**AD-SF** (for T210 & T245 Handles)

**HD-SF** (for T470 Heavy Duty Handles)

**DN-SF** (for T210N/T245N/T470N Nitrogen Handles)

## Packing List

Box includes one stand according to purchased reference.



**ADS for T210 & T245  
Handles** ..... 1 unit



**HDS for T470 Heavy Duty  
Handles** ..... 1 unit



**DNS for T210N/T245N/T470N  
Nitrogen Handles** ..... 1 unit



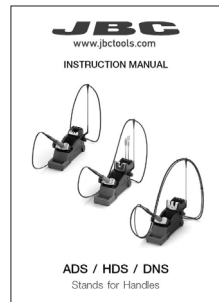
**Stand Cable 1m** ..... 1 unit  
Ref. 0024227



**Sponge for Modular  
Tool Stands** ..... 1 unit  
Ref. S7034

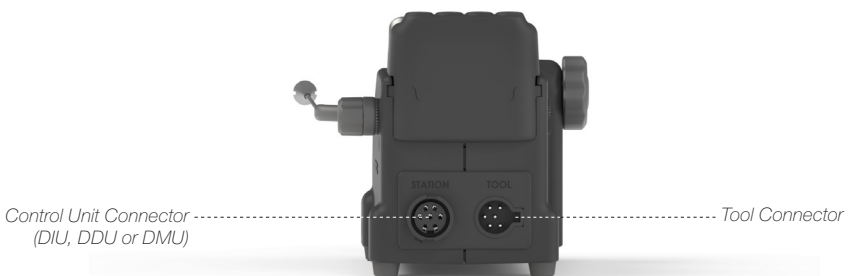
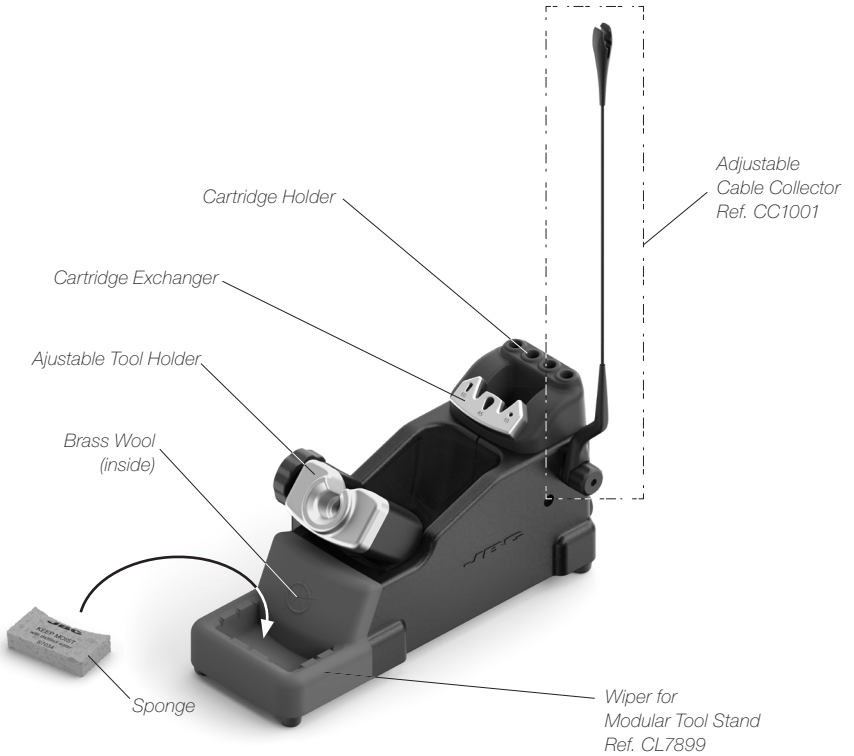


**Brass Wool** ..... 1 unit  
Ref. CL6210



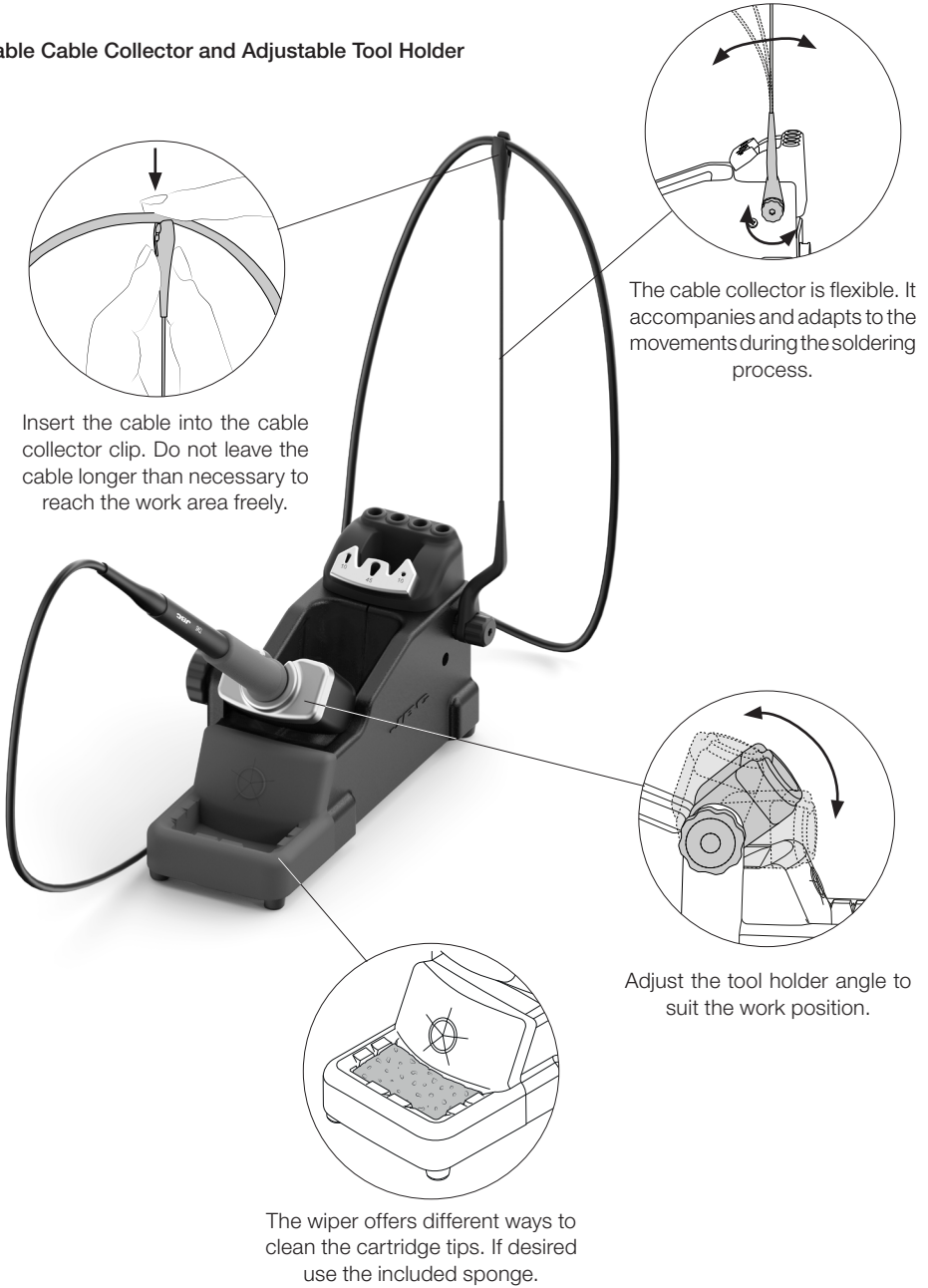
**Manual** ..... 1 unit  
Ref. 0027177

## Features and Connections



# Assembly

## Adjustable Cable Collector and Adjustable Tool Holder

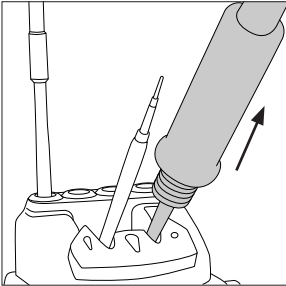


## Cartridge Exchanger

Save time and change cartridges safely without switching the station off. Be careful, the cartridges may be hot when placing them in the storage rack.

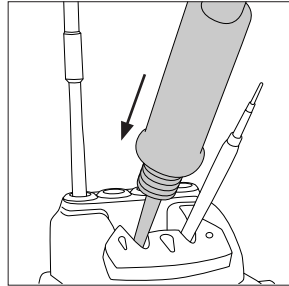
### Stand ADS (for T210 & T245 Handles)

#### 1. Removing



Place the cartridge in the exchanger and pull the handle to remove it.

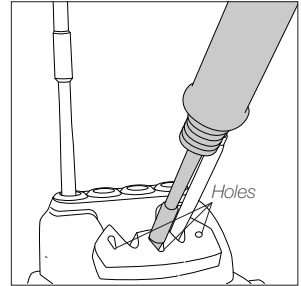
#### 2. Inserting



Place the handle on top of the new cartridge and press the handle down.

#### 3. Fixing

for ADS and DNS



Depending on the shape of the tip, use one of the holes for fixing the cartridge.

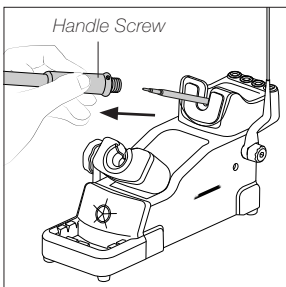
**Note:** It is essential to insert the cartridge up to the mark for a proper connection.



Mark

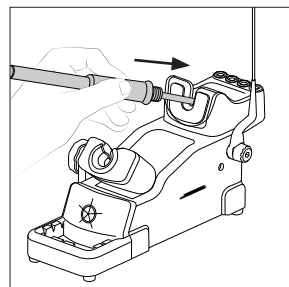
### Stand HDS (for T470 Heavy Duty Handles)

#### 1. Removing



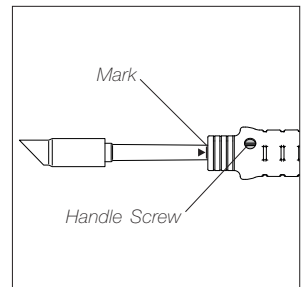
Loosen the handle screw. Place the Soldering Iron with the cartridge in the exchanger and pull the handle to remove it.

#### 2. Inserting



Place the handle on top of the new cartridge and press the handle down until the cartridge is fully seated.

#### 3. Fixing



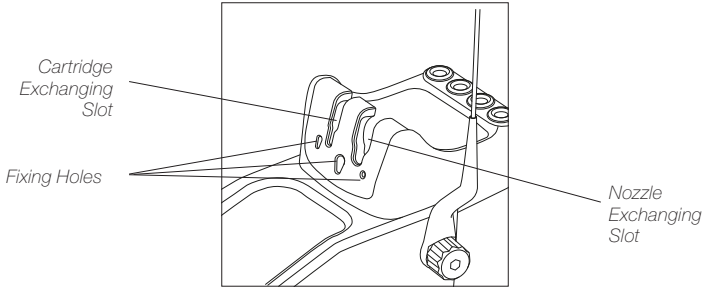
Tighten the handle screw. **Note:** Prior to tightening the handle screw, make sure that the mark on the cartridge is aligned with the handle (see picture) to ensure a proper cartridge connection.

# Nozzle Exchange

**Stand DNS** (for T210N/T245N/T470N Nitrogen Handles)

The cartridge exchanger for DNS stand features both, one slot for cartridge exchange and one for nozzle exchange. The nozzle exchange works as well as the cartridge exchange.

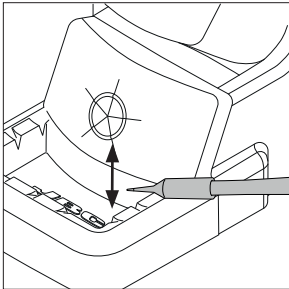
Use the fixing holes as described for the ADS on page 5.



# Wiper

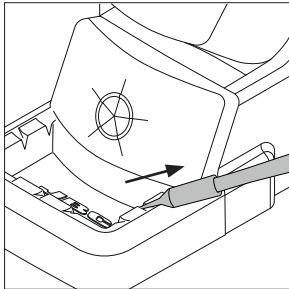
The integrated wiper offers different ways to clean the cartridge tips.

## Tapping



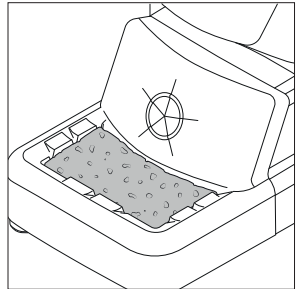
Tap gently to remove excess solder.

## Wiping



Use the slots to remove the remaining particles.

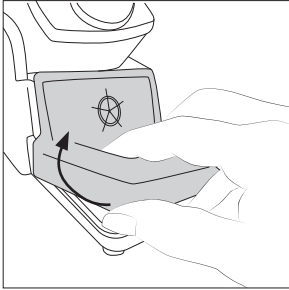
## Sponge



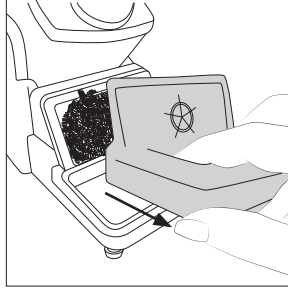
The softest cleaning method. Keep the sponge damp with distilled water when working to avoid tip wear.

## Wiper and Brass Wool Replacement

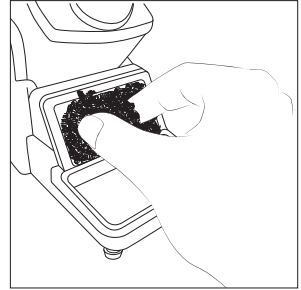
The wiper and brass wool can be easily removed for cleaning or replacement when they are worn.



Lift the wiper at its front edge.

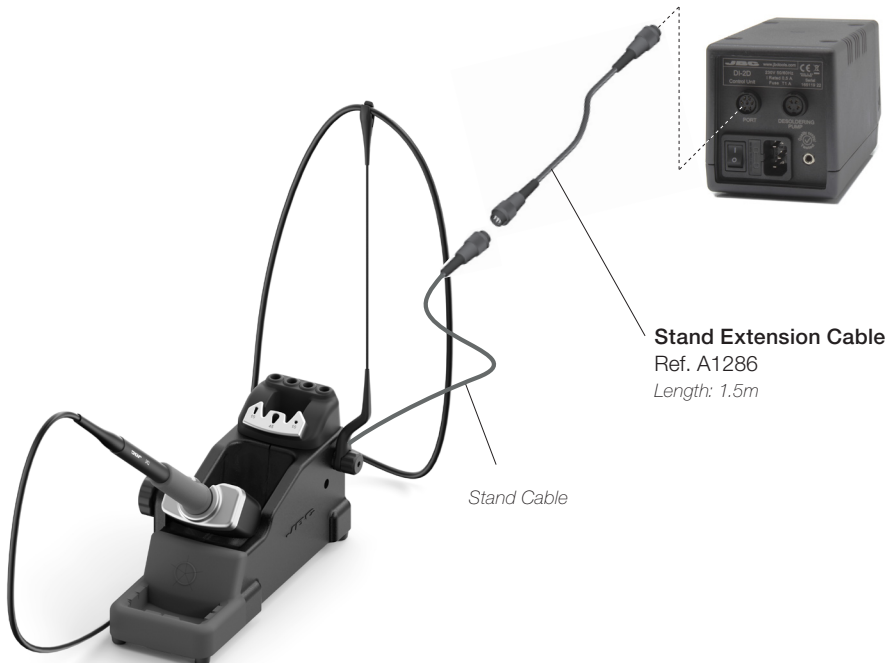


Remove the wiper by pulling it out.



Replace the brass wool with a new one when it is worn out. Place the wiper back or replace them if desired.

## Accessories



**Stand Extension Cable**

Ref. A1286

Length: 1.5m

Stand Cable

## Compatibility - Stand/Tool/Control Unit

	<b>Stands</b>	<b>ADS</b> for T210 & T245 Handles	<b>HDS</b> for T470 Heavy Duty Handles	<b>DNS</b> for T210/T245/T470 Nitrogen Handles
<b>Handles</b>	<b>Control Units</b>	DI, DDE, DME	HDE	DI, DDE, DME
<b>T210</b> Precision Handle		●		
<b>T210P</b> Blue Grip Precision Handle		●		
<b>T210N</b> Nitrogen Precision Purpose Handle				●
<b>T245</b> General Purpose Handle		●		
<b>T245G</b> General Purpose Handle with Reinforced Cable		●		
<b>T245P</b> Blue Grip General Purpose Handle		●		
<b>T245N</b> Nitrogen General Purpose Handle				●
<b>T470</b> Heavy Duty Handle - <i>1.5m (4.9ft) cable.</i>			●	
<b>T470S</b> Heavy Duty Handle - <i>3m (9.8ft) cable</i>			●	
<b>T470F</b> Thermal Insulator Grip Heavy Duty Handle - <i>1.5m (4.9ft) cable</i>			●	
<b>T470M</b> Thermal Insulator Grip Heavy Duty Handle - <i>3m (9.8ft) cable</i>			●	
<b>T470Z</b> Tri-Lobed Grip Heavy Duty Handle - <i>1.5m (4.9ft) cable</i>			●	
<b>T470N</b> Nitrogen Heavy Duty Handle - <i>1.5m (4.9ft) cable</i>				●



## Maintenance

Before carrying out maintenance or storage, always unplug the stand from the station and the tool.

- Use a damp cloth to clean the stand. Alcohol can be used only when cleaning metal parts.
- Check periodically that the metal parts of the tool/stand are clean so that the station can check the tool's status.
- Periodically check all cables and tube connections.
- Replace any defective or damaged parts. Use original JBC spare parts only.
- Repairs should only be performed by a JBC authorized technical service.



## Safety



**It is imperative to follow safety guidelines to prevent electric shock, injury, fire or explosion.**

- Do not use the stands for any purpose other than soldering or rework.
- The power cord must be plugged into approved bases. Be sure that it is properly grounded before use. When unplugging it, hold the plug, not the wire.
- The tool should be placed in the stand when is not in use in order to activate the sleep mode. The soldering tip, the metal part of the tool and the stand may still be hot even when the station is turned off. Handle with care, including when adjusting the stand position.
- Avoid the contact of flux with skin or eyes to prevent irritation.
- Be careful with the fumes produced when soldering.
- Keep your workplace clean and tidy. Wear appropriate protection glasses and gloves when working to avoid personal harm.
- Utmost care must be taken with liquid tin waste which can cause burns.
- This appliance can be used by children over the age of eight and also persons with reduced physical, sensory or mental capabilities or lack of experience provided that they have been given adequate supervision or instruction concerning use of the appliance and understand the hazards involved. Children must not play with the appliance.
- Maintenance must not be carried out by children unless supervised.

## Specifications

### ADS

#### Stand for T210 & T245 Handles

Ref.: **AD-SF**

- Includes	Sleep Mode
- Total Net Weight	1440 g / 3.17 lb
- Package Dimensions / Weight: (L x W x H)	342 x 155 x 120 mm / 2002 g 13.46 x 6.10 x 4.72 in / 4.41 lb

### HDS

#### Stand for T470 Heavy Duty Handles

Ref.: **HD-SF**

- Includes	Sleep Mode
- Total Net Weight	1514 g / 3.34 lb
- Package Dimensions / Weight: (L x W x H)	342 x 155 x 120 mm / 2076 g 13.46 x 6.10 x 4.72 in / 4.58 lb

### DNS

#### Stand for T210N / T245N / T470N Nitrogen Handles

Ref.: **DN-SF**

- Includes	Sleep Mode
- Total Net Weight	1510 g / 3.33 lb
- Package Dimensions / Weight: (L x W x H)	342 x 155 x 120 mm / 2072 g 13.46 x 6.10 x 4.72 in / 4.57 lb

Complies with CE standards  
ESD safe.

# JBC

---

## Warranty

JBC's 2 year warranty covers this equipment against all manufacturing defects, including the replacement of defective parts and labour.

Warranty does not cover product wear or misuse.

In order for the warranty to be valid, equipment must be returned, postage paid, to the dealer where it was purchased.

**Get 1 extra year JBC warranty by registering here:**  
<https://www.jbctools.com/productregistration/>  
**within 30 days of purchase.**

---



This product should not be thrown in the garbage.

In accordance with the European directive 2012/19/EU, electronic equipment at the end of its life must be collected and returned to an authorized recycling facility.



[www.jbctools.com](http://www.jbctools.com)