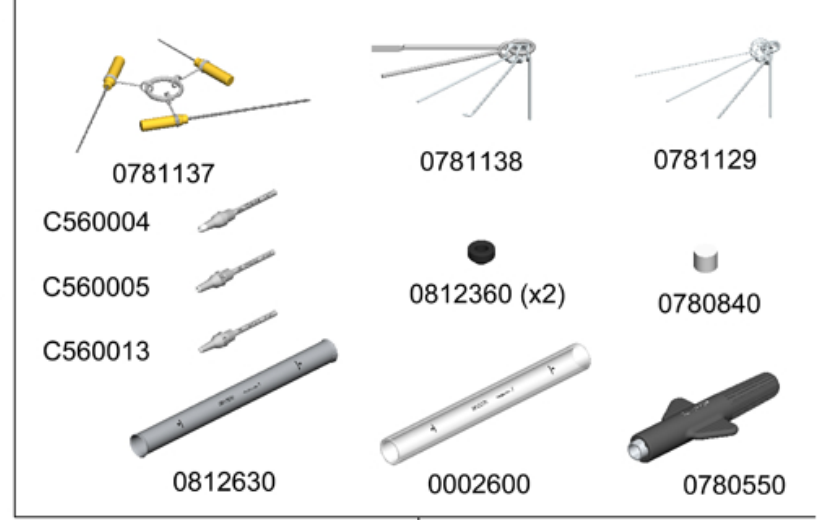


DDST-2B 230V
DDST-1B 120V
DDST-9B 100V

SOLDERING / DESOLDERING STATION

FROM SERIE 141773

SPARE PARTS	
DD-2B / DD-1B / DD-9B:	
-CIRCUIT	0009765
-ENCLOSURES:	
· TOP	0010480
· BOTTOM	0009771
· FRONT	0010064
· BACK	0010366
MS-A:	
-CIRCUIT	0006545
-ENCLOSURES:	
· TOP	0008197
· BOTTOM	0008198
· FRONT	0008835
· BACK	0008199
-PUMP	0005652



DDST-2B 230V FUSE T-2A
DDST-1B 120V FUSE T-4A
DDST-9B 100V FUSE T-4A

