

# JBC

[www.jbctools.com](http://www.jbctools.com)

## INSTRUCTION MANUAL



## Electric Desoldering Module

Ref. MS-A

# PACKING LIST

**MS-A**  
Electric Suction Module



**0010207**  
Module Cable connector



**MANUAL**



**0821830**  
Suction Filter



**0005966**  
50 Filters Box



**0781046**  
Cotton Filters



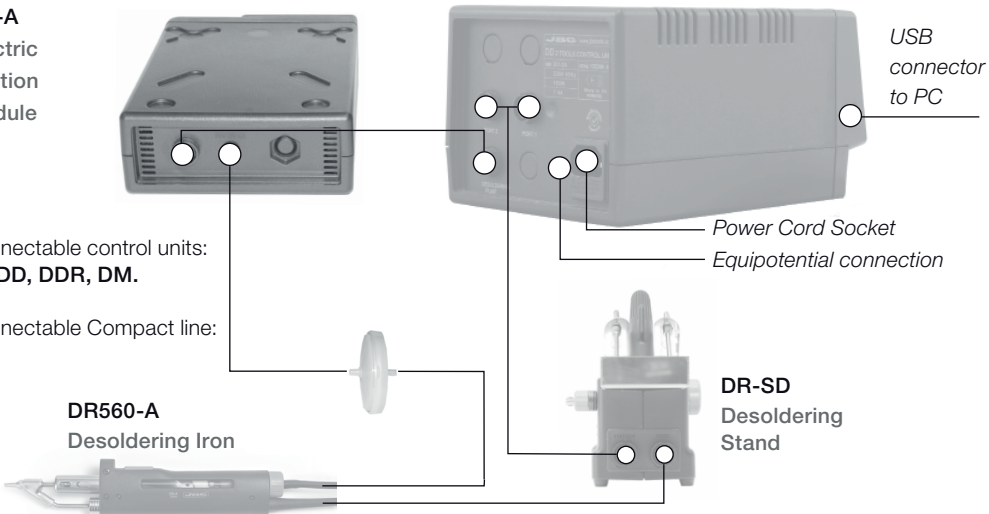
# INSTALLATION

**MS-A**  
Electric Suction Module

**DD-2B**  
Control Unit

Connectable control units:  
**DI, DD, DDR, DM.**

Connectable Compact line:  
**CS**

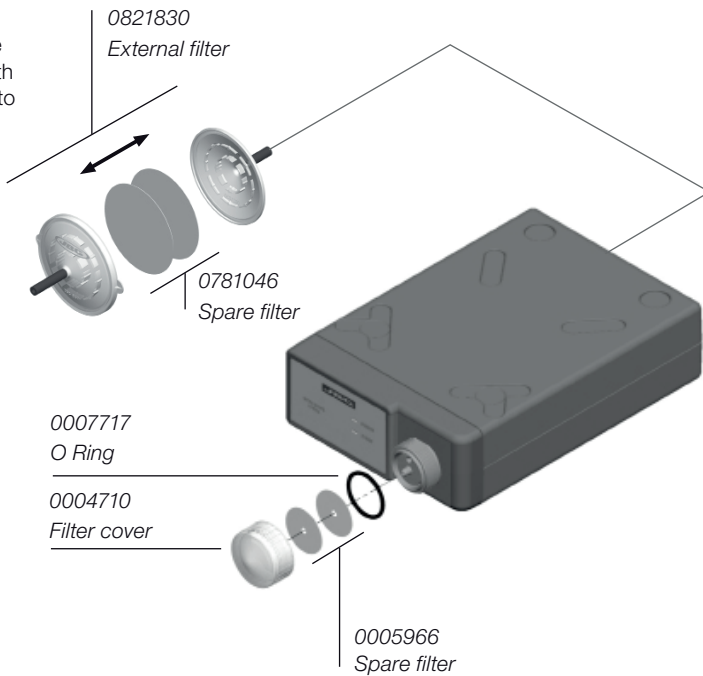


## ELECTRIC SUCTION MODULE ELEMENTS



## CHANGING PUMP FILTERS

**IMPORTANT**  
Do not open the external filter with sharps in order to avoid damage



## TECHNICAL SPECIFICATIONS

---

- Weight of complete unit: 1,2 Kgs.
- Complies with CE standards on electrical safety, electromagnetic compatibility and ESD protected housing "skin effect".
- RoHS compliant.
- Equipotential connector and the tool tip are connected to station mains ground supply for ESD protection.



This product should not be thrown in the garbage.

# JBC

---

### WARRANTY

JBC's 2 years warranty guarantees this equipment against all manufacturing defects, covering the replacement of defective parts and all necessary labour.

Warranty does not cover product wear due to use or mis-use.

In order for the warranty to be valid, equipment must be returned, postage paid, to the dealer where it was purchased enclosing this fully filled in, sheet.

---