

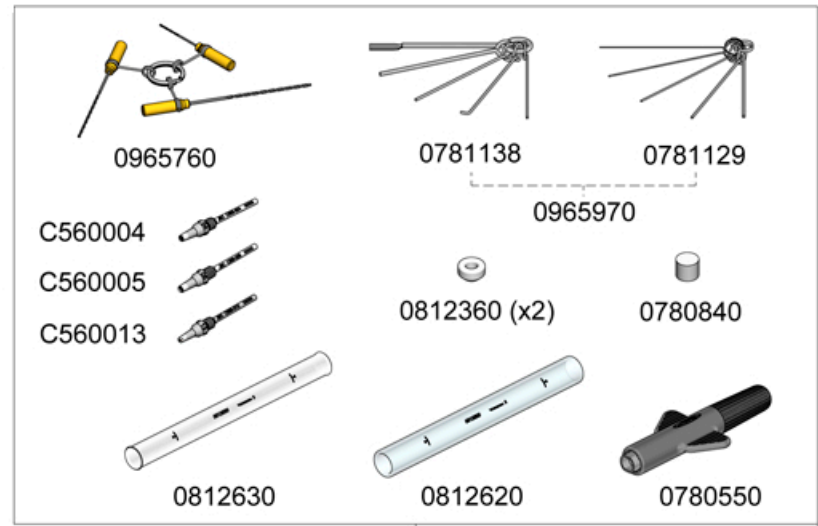
DDSE-1B 120V
DDSE-2B 230V
DDSE-9B 100V

REWORK STATION
 WITH ELECTRIC PUMP

DDE-1B / DDE-2B / DDE-9B



SPARE PARTS	
DDE-1B / DDE-2B / DDE-9B:	
-REAR CIRCUIT	0015121
-ENCLOSURE	
· TOP	0011035
· BOTTOM	0014567
· FRONT+DISPLAY	0016151
· BACK	0013413
MSE-A:	
-CIRCUIT	0014058
-ENCLOSURE	
· TOP	0015266
· BOTTOM	0014010
· FRONT	0014688
· BACK	0015261
-PUMP	0005652



DDSE-1B 120V FUSE T-4A
 DDSE-2B 230V FUSE T-2A
 DDSE-9B 100V FUSE T-5A

