

JBC

www.jbctools.com



Stand for JT

Ref. JT-SD

Packing List

The following items should be included:

Stand for JT 1 unit
 Ref. JT-SD

Manual 1 unit
 Ref. 0016868



Features

Stand
 Ref. JT-SD

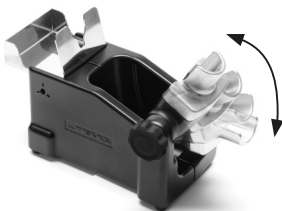


- Auxillar connector
- Equipotential connector
- USB connector
- Robot RS232 connector
- Power Socket
- Fuse

P-005 Pedal connection

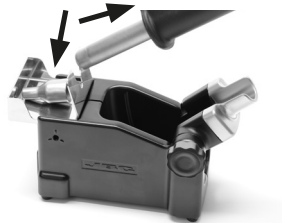
Adjustable Stand

Adjust the tool holder angle to suit your work position.



Removing the Nozzles

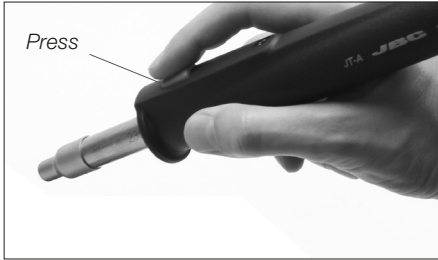
Used to remove the JT Nozzles.



Operating Modes

1. From the Tool Settings Menu, select the mode to activate the tool depending on the task.

Tool button



Press the start/stop button to blow hot air.

Pedal*



Press the Pedal to blow hot air and release to stop.

*The **P-005** Pedal is not supplied with this station.

2. The tool stops blowing when pressing the start/stop button.

If the stand is connected to the station and for safety it will also stop when returned to the stand.



Maintenance

Before carrying out maintenance or storage, always unplug the stand from the station and the tool.

- Use a damp cloth to clean the stand. Alcohol can only be used to clean the metal parts.
- Periodically check that the metal parts of the tool and stand are clean so that the station can detect the tool status.
- Periodically check all cables and tubes.
- Replace any defective or damaged parts.
- Only use original JBC spare parts.
- Repairs should only be performed by a JBC authorized technical service.



Specifications

- Weight: 1.24 kg (2.73 lb)
- Dimensions: 80 x 110 x 150 mm (3.15 x 4.33 x 5.91 in)

Complies with CE standards
ESD protected housing "skin effect"

JBC

Warranty

JBC's 2 year warranty covers this equipment against all manufacturing defects, including the replacement of defective parts and labour.

Warranty does not cover product wear or misuse.

In order for the warranty to be valid, equipment must be returned, postage paid, to the dealer where it was purchased.



This product should not be thrown in the garbage.

In accordance with the European directive 2002/96/EC, electronic equipment at the end of their life must be collected and returned to an authorized recycling facility.



Manual in other languages available on our website

www.jbctools.com