

# **JBC**

[www.jbctools.com](http://www.jbctools.com)



## **Tip Cleaner**

Ref. CL9885

# Packing list

The following items should be included:

**Tip Cleaner** ..... 1 unit  
Ref. CL9885

**Sponge** .....1 unit  
Ref. S0354

**Manual** ..... 1 unit  
Ref. 0006349



## Features

Improve thermal transfer by cleaning the tip after each solder joint.

**Brass Wool**  
Ref. CL6210

*Very effective cleaning method. It leaves a small layer of solder on the tip to prevent oxidation between cleaning and rewetting.*

**Sponge**  
Ref. S0354

*The least harmful cleaning method. Keep the sponge damp with distilled water when working to avoid tip wear.*

**Splashguard**

*It prevents splashing of solder particles when using the wool.*

**Wiper**  
Ref. CL0236

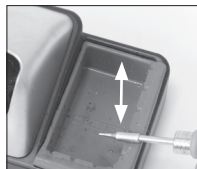
*A temperature resistant tray lets the operator remove excess solder by gently tapping or wiping.*



**Non-slip base**

*No need to hold the base while cleaning tips.*

Tapping:



Tap gently to remove excess solder.

Wiping:



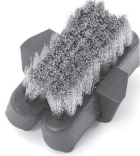
Use the slots to remove remaining particles.

## Optional

**Inox Wool**  
Ref. CL6205



**Metal Brush**  
Ref. CL6220



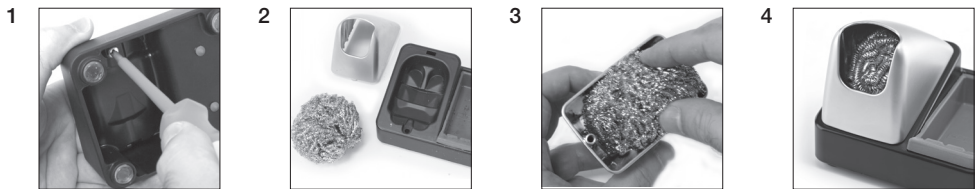
**Tip-Tinner**  
Ref. TT-A



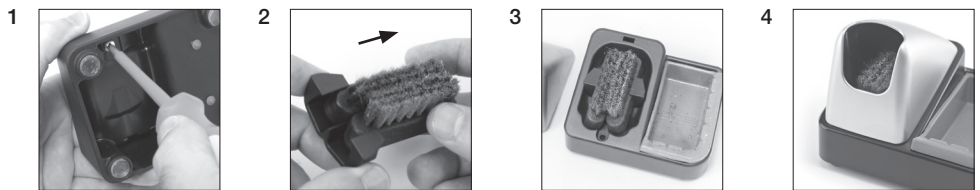
**Sand**  
Ref. CL6211



## Replacing Inox Wool



## Replacing Metal Brush Replacement



## Replacing Wiper Replacement



Wiper can be easily removed for cleaning.

# Specifications

- Weight and dimensions:

0.9 kg (1.9 lb) / 110 x 90 x 90 mm

# JBC

---

## Warranty

JBC's 2 year warranty covers this equipment against all manufacturing defects, including the replacement of defective parts and labour. Warranty does not cover product wear or misuse. In order for the warranty to be valid, equipment must be returned, postage paid, to the dealer where it was purchased.

---



This product should not be thrown in the garbage. In accordance with the European directive 2002/96/EC, electronic equipment at the end of their life must be collected and returned to an authorized recycling facility.