

JBC

www.jbctools.com

INSTRUCTION MANUAL



CL2466

Metal Brush for Nano
Stations

This manual corresponds to the following reference:

CL2466

Packing List

Metal Brush 1 unit

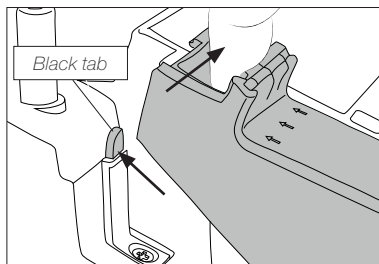
Ref. CL2466

Manual 1 unit

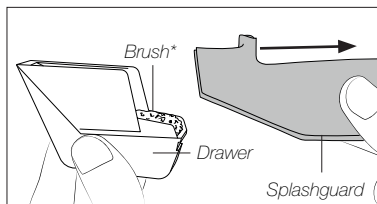
Ref. 0013587

Changing the Brush

1. Push the black tab to lift out the cleaning system.



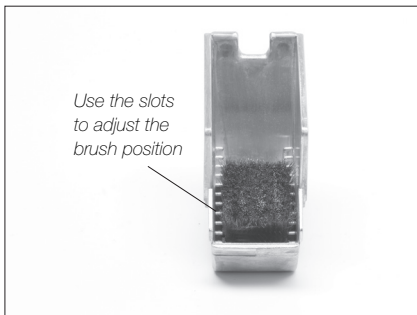
2. Separate both parts of the cleaning system to remove the brush.



* Alternatively brass wool can be used.

3. Place the new brush into the drawer.

Note: Positioning the brush further back reduces the amount of solder residue that spurts out.



Compatible Cleaning Products

Brass Wool*

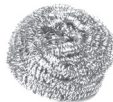
Ref. CL6210



Leaves a small layer of solder on the tip, preventing oxidation between cleaning and reflowing.

Inox Wool*

Ref. CL6205



Provides a superior cleaning of the tip.

* Cut the brass wool ball in half so that it fits into the cleaning system.

CL2466

Metal Brush for Nano Stations

Ref.: **CL2466**

- Net Weight:	30.1 g / 0.06 lb
- Package Dimensions / Weight: (LxWxH)	80 x 40 x 35 mm / 39.3 g 3.15 x 1.57 x 1.38 in / 0.08 lb

Complies with CE standards.

JBC

Warranty

JBC's 2 year warranty covers this equipment against all manufacturing defects, including the replacement of defective parts and labour.

Warranty does not cover product wear or misuse.

In order for the warranty to be valid, equipment must be returned, postage paid, to the dealer where it was purchased.



This product should not be thrown in the garbage.

In accordance with the European directive 2012/19/EU, electronic equipment at the end of its life must be collected and returned to an authorized recycling facility.



www.jbctools.com

0013587-080323